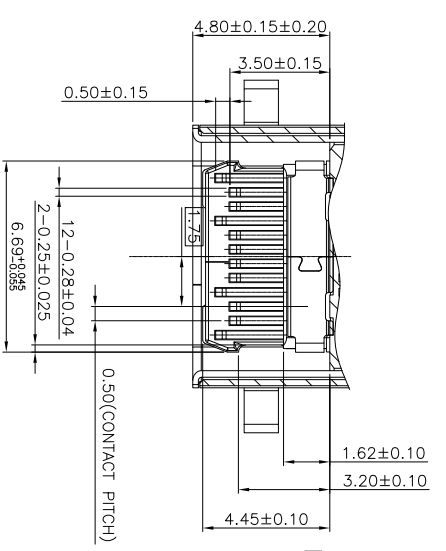
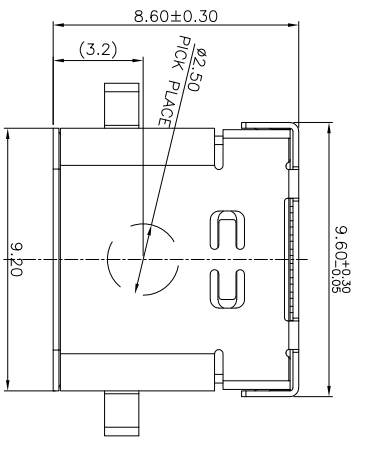
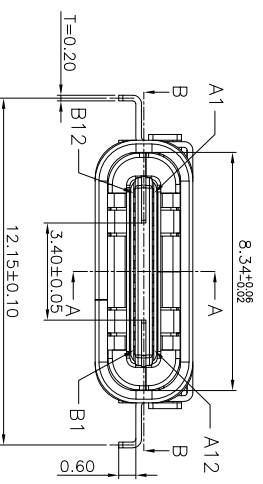


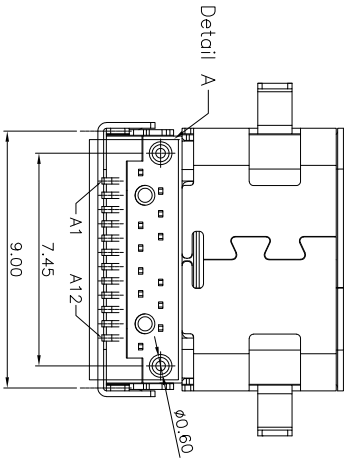
REV.	ECN. NO.	APPD.
A		



SECTION B-B

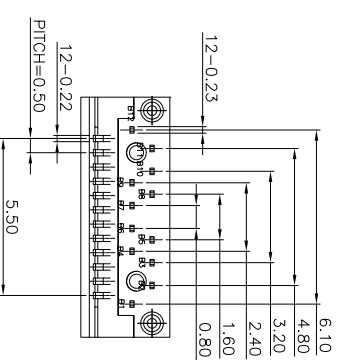


SECTION A-A



Detail A

- NOTES: 1. MATERIAL:
MOLDING: LCP UL94 V-0
CONTACT: COPPER ALLOY.
GOLD PLATED Min ON CONTACT AREA, 100u”
Min TIN (LEAD FREE) ON SOLDER AREA,
SHELL: SUS304-H,T=0.30±0.03mm
50u” NICKEL PLATING OVER ALL.
SHLD: SUS304-H,T=0.12±0.03mm
2. MECHANICAL:
INSERTION: 5~20N.
EXTRACTION: 8~20N.
DURABILITY: 10000 CYCLES
3. ELECTRICAL:
CURRENT: 5A MIN FOR VBUS;
0.25A MIN FOR OTHER.
VOLTAGE: 20 V MAX
WITHSTANDING VOLTAGE: 100V AC.
CONTACT RESISTANCE: 40mΩ MAX.
INSULATION RESISTANCE: 100MΩ MIN.
4. ENVIRONMENTAL
TEMPERATURE RANGE -55°C ~ +85°C



X. ±0.30	X° ±5°	UNITS mm	NAME (INTENDED USE)	MINTRON CO., LTD.
XX ±0.10	XX° ±1°	MATL	TITLE:	
XXX ±0.05	XXX° ±0.5°	FINISH	TYPE C CONNECTOR	
		QTY	DWG NO.: 00501-UCAF011-X	
			APPD: SUNNY	TYPE C 连接器 板后插后插01P-SMT 2P 1-R, 65
			CHKD: LISA	
			DR: ZOE 2022-06-10	
			SCALE 1/1	SHEET 1/1
			REV. A	REV. A

MINTRON CO., LTD.

DWG NO.: 00501-UCAF011-X



SCALE 1/1 SHEET 1/1 REV. A

