

**PLEASE CHECK WWW.MOLEX.COM FOR LATEST PART INFORMATION**

**Part Number:** [170001-0104](#)  
**Status:** **Active**  
**Overview:** [Mega-Fit Power Connectors](#)  
**Description:** Mega-Fit™ Receptacle Housing, Dual Row, 4 Circuit, Glow-Wire Compliant, Bag

**Documents:**

[3D Model](#) [Test Summary TS-170001-001 \(PDF\)](#)  
[Drawing \(PDF\)](#) [RoHS Certificate of Compliance \(PDF\)](#)

**Agency Certification**

CSA LR19980  
 UL E29179

**General**

Product Family Crimp Housings  
 Series [170001](#)  
 Application Power, Wire-to-Board, Wire-to-Wire  
 Overview [Mega-Fit Power Connectors](#)  
 Product Name Mega-Fit™  
 UPC 887191246291

**Physical**

Circuits (maximum) 4  
 Circuits Detail 4  
 Color - Resin Black  
 Flammability 94V-2  
 Gender Male  
 Glow-Wire Compliant Yes  
 Lock to Mating Part Yes  
 Material - Resin Nylon  
 Net Weight 2.080/g  
 Number of Rows 2  
 Packaging Type Bag  
 Panel Mount No  
 Pitch - Mating Interface 5.70mm  
 Pitch - Termination Interface 5.70mm  
 Polarized to Mating Part Yes  
 Temperature Range - Operating -40°C to +105°C

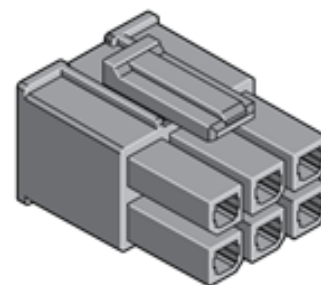
**Electrical**

Current - Maximum per Contact 23A

**Material Info**

**Reference - Drawing Numbers**

Sales Drawing SD-170001-0100, SD-171692-0100  
 Test Summary TS-170001-001



Series

image - Reference only

**EU RoHS**

**ELV and RoHS Compliant**  
**REACH SVHC Contains SVHC: No**  
**Low-Halogen Status Not Low-Halogen**

**China RoHS**



**Need more information on product environmental compliance?**

Email [productcompliance@molex.com](mailto:productcompliance@molex.com)  
 For a multiple part number RoHS Certificate of Compliance, [click here](#)

Please visit the [Contact Us](#) section for any non-product compliance questions.

**Search Parts in this Series**

[170001Series](#)

**Mates With**

Mega-Fit™ Header [76825](#) , [76829](#) , [172064](#) , [172065](#)

**Use With**

Mega-Fit™ Crimp Terminals, [172063](#)