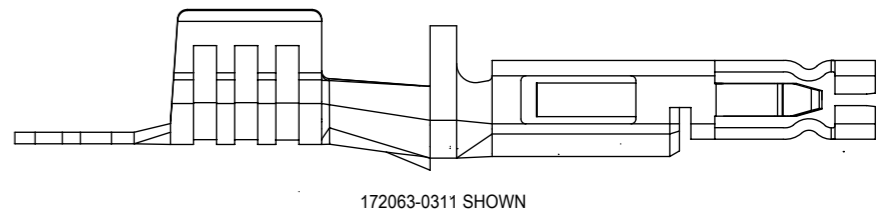
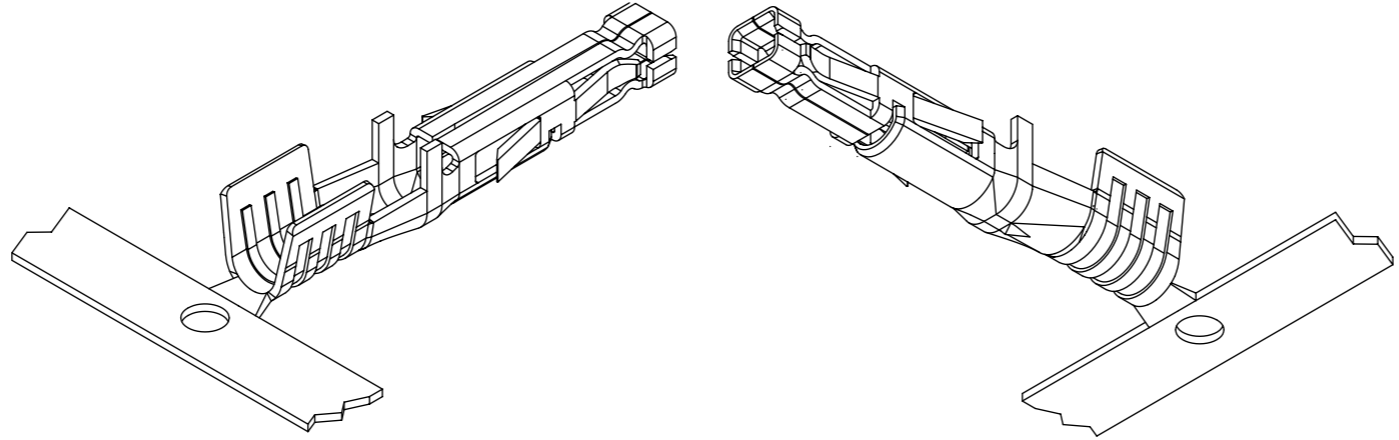
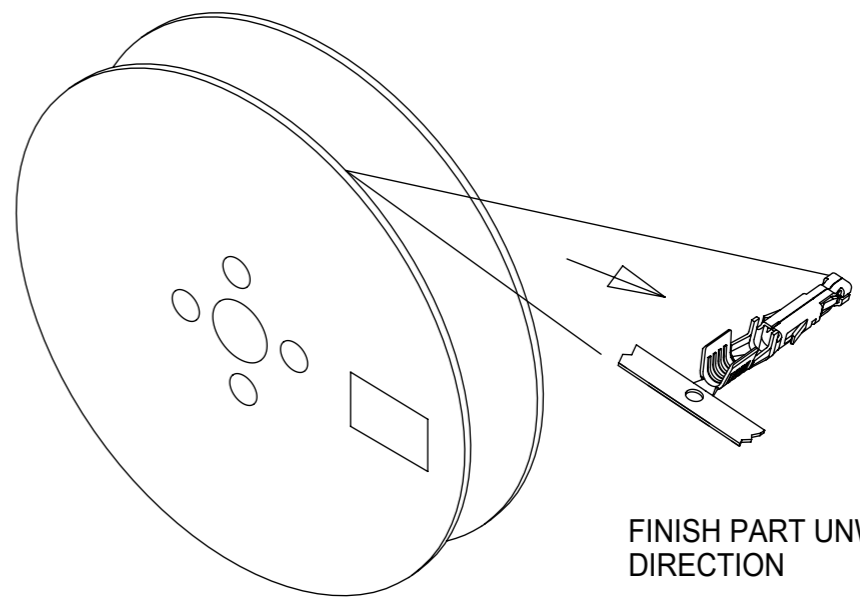
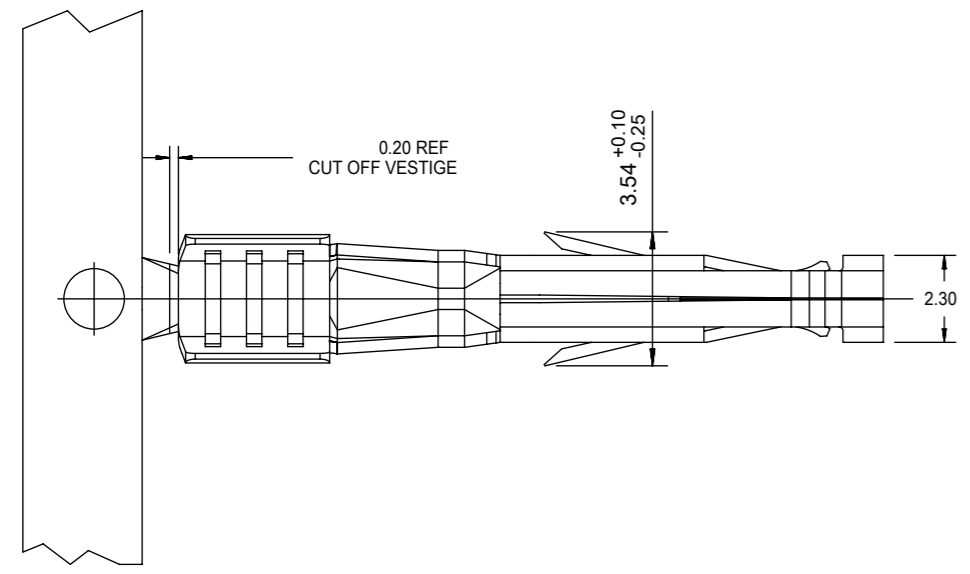


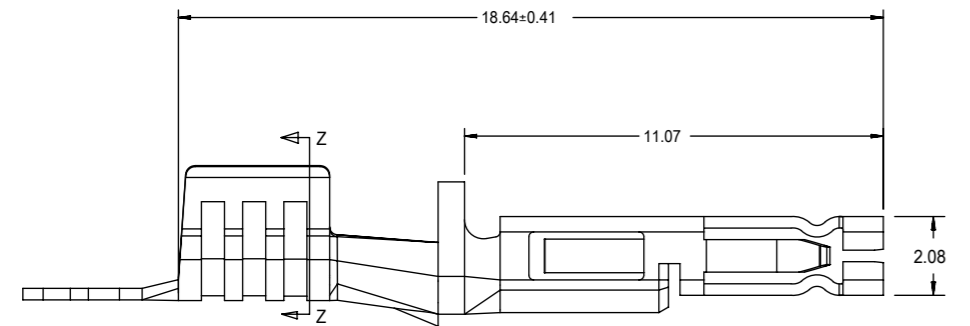
ITEM NO.	WIRE GAUGE (AWG)	WIRE GAUGE (METRIC)	PLATING	PACKAGING
172063-0311	14 OR 16 AWG	1.5mm ²	15 GOLD	REEL
172063-0312	12 AWG	4.0 OR 2.5mm ²	15 GOLD	REEL
172063-1311	14 OR 16 AWG	1.5mm ²	30 GOLD	REEL
172063-1312	12 AWG	4.0 OR 2.5mm ²	30 GOLD	REEL
76823-0321	14 OR 16 AWG	1.5mm ²	TIN	REEL
76823-0322	12 AWG	4.0 OR 2.5mm ²	TIN	REEL



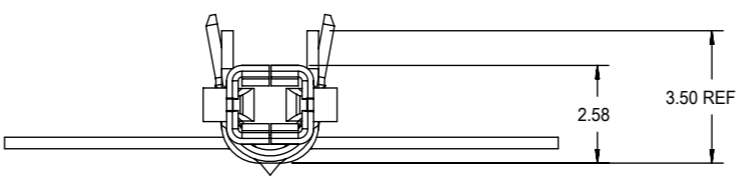
172063-0311 SHOWN



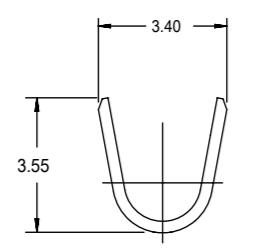
FINISH PART UNWIND DIRECTION



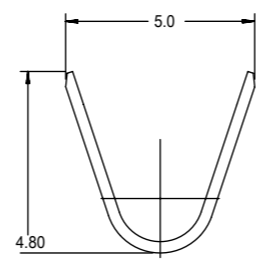
76823-0321 SHOWN



- NOTES:
- MATERIAL: HIGH CONDUCTIVITY COPPER ALLOY
 - FINISH:
 (TIN) 1.52 MICROMETER (60 MICROINCH) MINIMUM REFLOWED MATTE TIN OVER
 1.27 MICROMETER (50 MICROINCH) MINIMUM NICKEL. LUBRICANT ADDED TO CONTACT INTERFACE.
 (15 GOLD) 0.38 MICROMETER (15 MICROINCH) MINIMUM SELECT GOLD AND 2.54 MICROMETER (100 MICROINCH) MINIMUM SELECT MATTE TIN OVER 1.27 MICROMETER (50 MICROINCH) MINIMUM NICKEL OVERALL.
 (30 GOLD) 0.76 MICROMETER (30 MICROINCH) MINIMUM SELECT GOLD AND 2.54 MICROMETER (100 MICROINCH) MINIMUM SELECT MATTE TIN OVER 1.27 MICROMETER (50 MICROINCH) MINIMUM NICKEL OVERALL.
 - PRODUCT SPECIFICATION: PS-76823-100
 - PACKAGING REEL PER PK-76823-001.
LOOSE PER PK-76823-002
 - TERMINAL FOR USE WITH 170001 & 171692-01XX SERIES RECEPTACLES.
 - APPLICATION SPECIFICATION: AS-76823-100
 - PART CONFORMS TO CLASS "B" REQUIREMENTS OF COSMETIC SPECIFICATION PS-45499-002.



SECTION Z-Z
CONDUCTOR CRIMP 14/16 AWG



SECTION Z-Z
CONDUCTOR CRIMP 12 AWG

MODEL: EM-76823-0111 & EM-172063-0311

THIS DRAWING CONTAINS INFORMATION THAT IS PROPRIETARY TO MOLEX ELECTRONIC TECHNOLOGIES, LLC AND SHOULD NOT BE USED WITHOUT WRITTEN PERMISSION		CURRENT REV DESC:			
DIMENSION UNITS	SCALE				
mm	NTS			FEMALE CRIMP TERMINAL MEGA-FIT	
GENERAL TOLERANCES (UNLESS SPECIFIED)				PRODUCT CUSTOMER DRAWING	
ANGULAR TOL	± 0.5 °			DOCUMENT NUMBER	
4 PLACES	±	EC NO: 755658		SD-76823-0100	
3 PLACES	±	DRWN: WYATTH5	2023/07/04	DOC TYPE	DOC PART
2 PLACES	± 0.25	CHK'D: XQZHANG	2023/07/24	PSD	001
1 PLACE	± 0.36	APPR: XQZHANG	2023/07/24	REVISION	
0 PLACES	±	INITIAL REVISION:		C4	
DRAFT WHERE APPLICABLE MUST REMAIN WITHIN DIMENSIONS		DRWN: MKARADIMAS	2011/10/19	MATERIAL NUMBER	
THIRD ANGLE PROJECTION		APPR: APATEL	2012/04/03	CUSTOMER	
DRAWING		SERIES		GENERAL MARKET	
A3-SIZE		76823		SHEET NUMBER	
				1 OF 1	

DOCUMENT STATUS	P1	RELEASE DATE	2023/07/24	06:40:41
-----------------	----	--------------	------------	----------