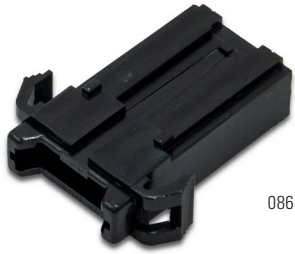


# ATO® 155 SERIES

## 32V STACKABLE IN-LINE PANEL-MOUNT FUSE HOLDER WITH LOOPED WIRE LEADS



08680062H

### Description

The ATO® 155 Series 32V Stackable In-Line Panel-Mount Fuse Holder with Looped Wire Leads makes it simple to install an ATO® or FKS blade-style automotive fuse (sold separately unless indicated).

Configurations with black 14 AWG leads are compatible with fuses up to 20 amps, while models of the panel-mount fuse holder with orange 10 AWG leads accept fuses up to 30 amps.

The stackable fuse holder can also be used with additional ATO® 155 Series fuse holders to create a fuse block for multiple fuses.

### Web Resources

Download 2D print, installation guide and technical resources at: [littelfuse.com/ATO155](http://littelfuse.com/ATO155)

### Ordering Information

PART NUMBER	DESCRIPTION	FUSE TYPE	MOUNTING METHOD	MAX CURRENT RATING	MAX VOLTAGE RATING
01550300LXN, W/O Fuse	32V Stackable In-Line Panel-Mount Fuse Holder with Black 14 AWG Looped Wire Leads	ATO	IN LINE FUSE HOLDER	20 Amps	32V
01550310ZXA, W/FUSE 10A	32V Stackable In-Line Panel-Mount Fuse Holder with Black 14 AWG Looped Wire Leads and 10A Fuse	ATO	IN LINE FUSE HOLDER	10Amps	32V
01550320ZXA, W/FUSE 20A	32V Stackable In-Line Panel-Mount Fuse Holder with Black 14 AWG Looped Wire Leads and 20A Fuse	ATO	IN LINE FUSE HOLDER	20Amps	32V
01550320ZXU, W/O Fuse	32V Stackable In-Line Panel-Mount Fuse Holder with Terminals for 14 AWG Wire	ATO	IN LINE FUSE HOLDER	20 Amps	32V
01550400Z, W/O Fuse	32V Stackable In-Line Panel-Mount Fuse Holder with Orange 10 AWG Looped Wire Leads	ATO	IN LINE FUSE HOLDER	30 Amps	32V
01550430ZXA, W/FUSE 30A	32V Stackable In-Line Panel-Mount Fuse Holder with Orange 10 AWG Looped Wire Leads and 30A Fuse	ATO	IN LINE FUSE HOLDER	30Amps	32V
01550430ZXU, W/O Fuse	32V Stackable In-Line Panel-Mount Fuse Holder with Terminals for 10 AWG Wire	ATO	IN LINE FUSE HOLDER	30 Amps	32V
08680062H, W/O Fuse	32V Stackable In-Line Panel-Mount Fuse Holder Body	ATO	IN LINE FUSE HOLDER	N/A	N/A
01550300Z, W/O Fuse	32V Stackable In-Line Panel-Mount Fuse Holder with Black 14 AWG Looped Wire Leads	ATO	IN LINE FUSE HOLDER	20 Amps	32V
868-062-000UL, W/O Fuse	32V Stackable In-Line Panel-Mount Fuse Holder UL Body	ATO	IN LINE FUSE HOLDER	N/A	N/A
913-008	Crimp Terminal with Insulation Grip - 14 Gauge, Reel	N/A	CRIMPED	N/A	N/A
913-008-001	Crimp Terminal with Insulation Grip - 14 Gauge	N/A	CRIMPED	N/A	N/A
913-008-R	Crimp Terminal with Insulation Grip - 14 Gauge, Reverse Reel	N/A	CRIMPED	N/A	N/A
868-062-000, W/O Fuse	32V Stackable In-Line Panel-Mount Fuse Holder Body	ATO	IN LINE FUSE HOLDER	N/A	N/A
913-007	Crimp Terminal with Insulation Grip - 10 Gauge, Reel	N/A	CRIMPED	N/A	N/A
913-007-001	Crimp Terminal with Insulation Grip - 10 Gauge	N/A	CRIMPED	N/A	N/A
01550400LXN W/O Fuse	32V Stackable In-Line Panel-Mount Fuse Holder with Orange 10 AWG Looped Wire Leads	ATO	IN LINE FUSE HOLDER	30 Amps	32V

### Specifications

<b>Max Current Rating:</b>	30 Amps, 20 Amps, 10 Amps
<b>Fuse Type:</b>	ATO®
<b>Mounting Method:</b>	IN LINE FUSE HOLDER
<b>Max Voltage Rating:</b>	32 V

### Applications

- Automotive
- Electronics
- Small Auxiliary Circuit Protection

### Features and Benefits

- Accepts ATO® or FKS blade fuses (sold separately unless indicated) up to 20 amps or 30 amps
- Configurations available with either black 14 AWG leads or orange 10 AWG leads to suit different applications
- Stackable fuse holder body can be paired with additional ATO® 155 Series fuse holders to create a multi-fuse block
- Various fuse holder component parts are also available separately, including the body, UL body, and crimp terminals for the different wire gauges

# Mouser Electronics

Authorized Distributor

Click to View Pricing, Inventory, Delivery & Lifecycle Information:

## Littelfuse:

[868-062-000](#) [913-008](#) [913-007](#) [01550315ZXA](#) [01550430ZXU](#) [01550430ZXA](#) [01550320ZXU](#) [01550400Z](#)  
[01550425ZXA](#) [01550305ZXA](#) [01550303ZXA](#) [01550310ZXA](#) [01550300Z](#) [913-007-001](#) [01550400LXN](#) [913-008-001](#)  
[08680062H](#) [01550300LXN](#) [913-007-R](#) [913-008-R](#) [868-110](#)