

# INTEL® NUC 8 COMPUTE ELEMENT

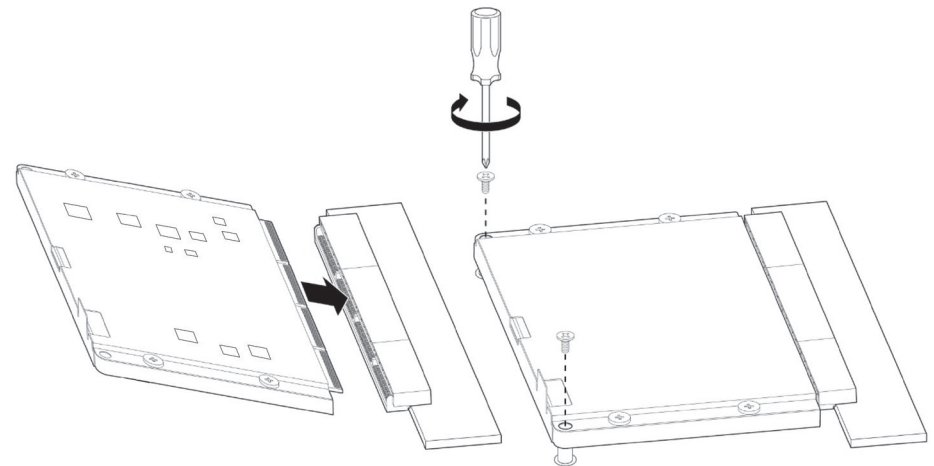
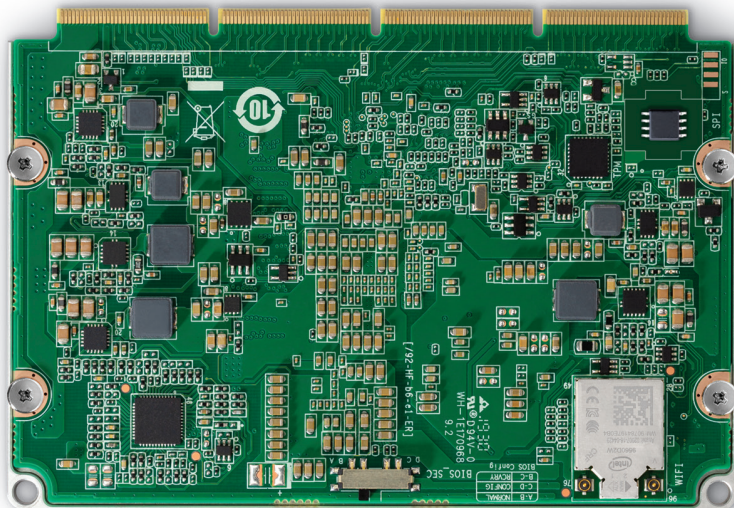
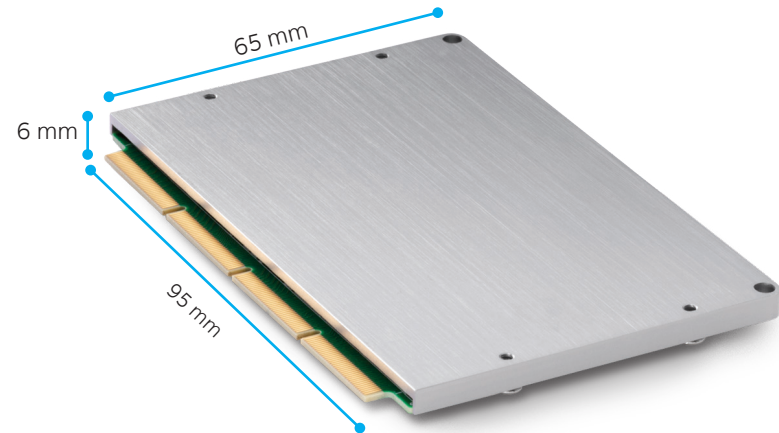


## U-Series Technical Specifications

The Intel® NUC 8 Compute Element comes with processor, memory and all the I/O you need in a tiny package.

### AVAILABLE PRODUCTS

- CM8v7CB–Intel® Core™ i7 processor with Intel vPro® Technology
- CM8i7CB–Intel® Core™ i7 processor
- CM8v5CB–Intel® Core™ i5 processor with Intel vPro® Technology
- CM8i5CB–Intel® Core™ i5 processor
- CM8i3CB–Intel® Core™ i3 processor
- CM8PCB–Intel® Pentium® Gold processor
- CM8CCB–Intel® Celeron® processor



Integration method

# INTEL® NUC 8 COMPUTE ELEMENT

## U-Series Technical Specifications

For more information visit  
[www.intel.com/nucassets](http://www.intel.com/nucassets)  
[ARK.intel.com](http://ARK.intel.com)

### PROCESSORS

- Intel® Core™ i7-8665U Processor with Intel vPro® Technology (1.9 GHz – 4.8 GHz Turbo, Quad Core, 8 MB Cache, 15W)
- Intel® Core™ i7-8565U Processor (1.8 GHz – 4.6 GHz Turbo, Quad Core, 8 MB Cache, 15W)
- Intel® Core™ i5-8365U Processor with Intel vPro® Technology (1.6 GHz – 4.1 GHz Turbo, Quad Core, 6 MB Cache, 15W)
- Intel® Core™ i5-8265U Processor (1.6 GHz – 3.9 GHz Turbo, Quad Core, 6 MB Cache, 15W)
- Intel® Core™ i3-8145U Processor (2.1 GHz – 3.9 GHz Turbo, Dual Core, 4 MB Cache, 15W)
- Intel® Pentium® Gold 5405U Processor (2.3 GHz, Dual Core, 2 MB Cache, 15W)
- Intel® Celeron® 4305U Processor (2.2 GHz, Dual Core, 2 MB Cache, 15W)

### GRAPHICS

- Intel® UHD Graphics 620 (Intel® Core™ processors)
- Intel® UHD Graphics 610 (Intel® Pentium® and Celeron® processors)

### STORAGE CAPABILITIES

- 64 GB eMMC Storage (soldered-down on Intel Pentium and Celeron processor skus)
- Storage not included on Intel Core processor skus

### SYSTEM MEMORY

4-8 GB RAM, dual-channel (soldered-down)

### PERIPHERAL CONNECTIVITY

- Intel® Wireless-AC 9560 soldered-down, 802.11ac 2x2 1.73 Mbps
- Bluetooth\* 5

### SYSTEM BIOS

- 64 Mb Flash EEPROM with Intel® Platform Innovation Framework for EFI Plug and Play
- Advanced configuration and power interface V5.0b, SMBIOS2.5

### HARDWARE MANAGEMENT FEATURES

- Voltage and temperature sensing
- ACPI-compliant power management control

### SUPPORTED I/O

- 4 USB 3.1
- 3 USB 2.0
- 2 x DDI (configurable as DP or HDMI\*)
- 1 x eDP
- 1 x GbE PHY
- 1 x PCIe\* x4/SATA
- 1 x PCIe x4
- 1 x PCIe x1
- 1 x HD Audio
- eSPI (EC interface)

### MODULE SIZE

3.74" x 2.55" x .23"  
95 mm x 65 mm x 6 mm

### COMPUTE ELEMENT CAPABILITIES

- Qualified for 24x7 sustained operation

### TEMPERATURE

#### ENVIRONMENT OPERATING

- 0° C to +55° C

#### STORAGE

- -20° C to +40° C

### SAFETY REGULATIONS AND STANDARDS

- IEC/EN/UL 60950-1
- IEC/EN/UL 62368-1

### EMC/RF REGULATIONS AND STANDARDS

- FCC Part 15B/15C/15E
- CISPR/EN 55032/55024
- ICES-003
- VCCI 32
- BSMI CNS 13438
- KN 32/35
- AS/NZS CISPR 32
- EN 300 328
- EN 301 893
- EN 300 440
- EN 301 489-1/3/17
- EN 62311
- AS/NZS 4268
- AS/NZS 2772.2
- ARPANSA

### ENVIRONMENTAL REGULATIONS

- EU RoHS
- China RoHS
- Taiwan BSMI RoHS
- REACH

