

				TOLERANCE		<b>UMax</b> 东莞市友贸实业有限公司 <b>conn</b> DONGGUAN UMAXCONN ENTERPRISE LIMITED		TITLE: MINI PCI EXPRESS 5.2MM HEIGHT			
				LINEAR	ANGLES			PART NO. 91304-52-052RXXX			
				X±0.40	X'±	APPD: Jason	MAT'L:	DWG NO. C-91304-52			
				.X±0.30	.X'±	CHKD: Schumi	FINISH:	UNITS	SCALE	SHEET	REV
0	----	Lei Songping	Jun,06,2019	.XX±0.20	.XX'±	DRWN: Lei Songping	Q'TY:	MM	1 : 1	1 OF 5	0
REV	ECN NO.	NAME	DATE	.XXX±0.15	.XXX'±						

NOTES:

1. MATERIAL:  
 HOUSING: THERMOPLASTIC, HIGH TEMP, UL94V-0, BLACK COLOR,  
 CONTACTS: COPPER ALLOY.  
 PEGS: COPPER ALLOY.

2. FINISH:  
 CONTACTS: SELECTED GOLD PLATING ON THE CONTACT AREA,  
 1u" MIN. GOLD PLATING ON THE SOLDER TAILS,  
 50 u" MIN. NICKEL UNDERPLATING OVER ALL.  
 PEGS: 120u" MIN. MATTE-TIN OVER 50u" MIN. NICKEL.

3. PACKAGING SPECIFICATION: 9130404001

4. PRODUCT SPECIFICATION: PS-MINI PCI-E-01

5. DATE CODE.

YYWWDD

YY: YEAR (19: 2019)

WW: WEEK (25: THE 25TH WEEK)

DD: (D1~D7: SUNDAY~SATURDAY)

PRODUCT NUMBER CODE

91304 - 52 - 052 R X XX

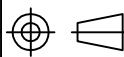
52: 5.2H HEIGHT

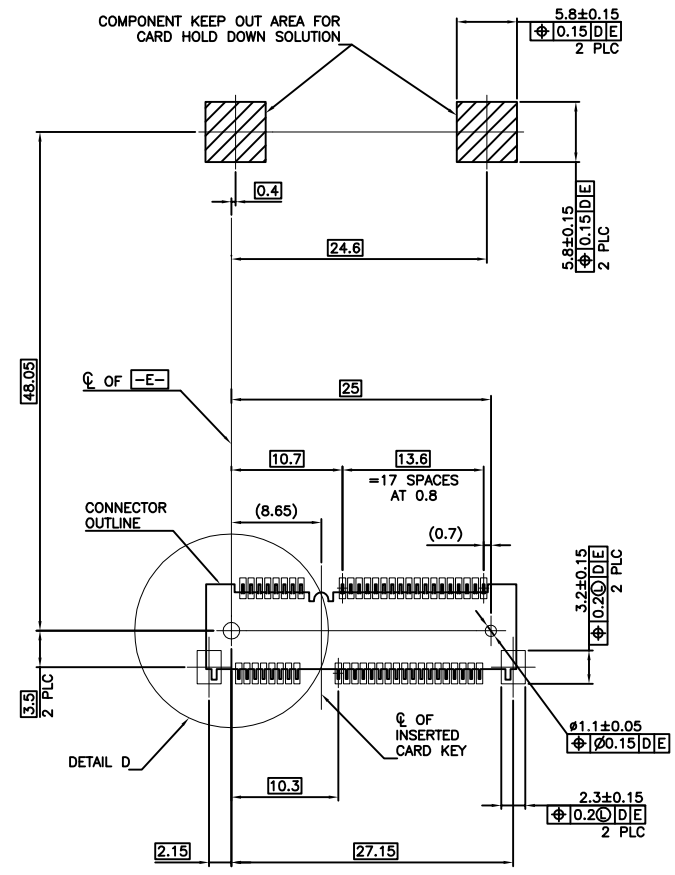
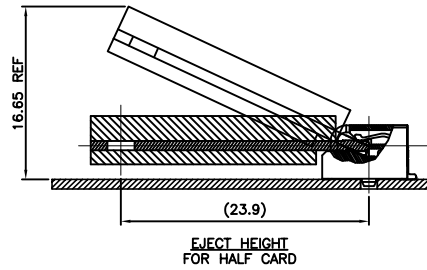
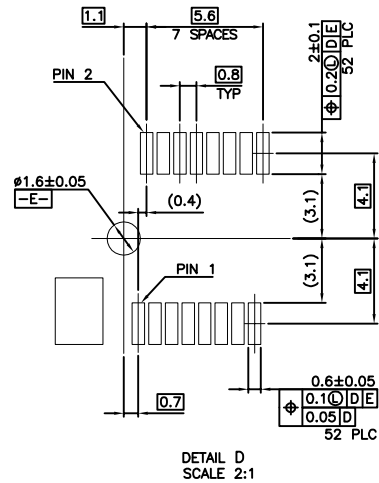
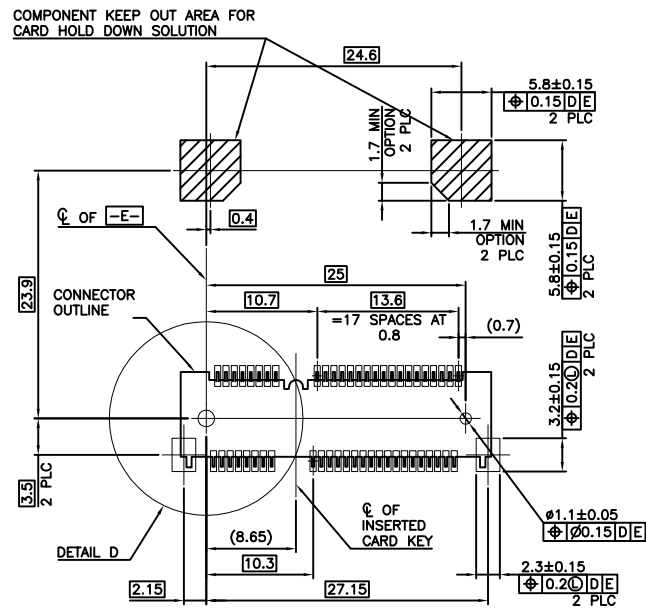
52 CONTACTS

PACKAGING OPTIONS  
 R: TAPE & REEL

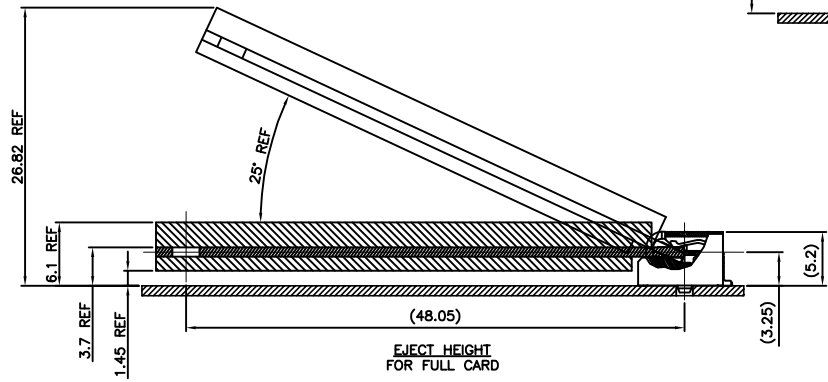
HALOGEN OPTIONS  
 BLANK: HALOGEN  
 HF: HALOGEN FREE

CONTACT AREA PLATING  
 0: 30u" GOLD  
 1: 10u" GOLD  
 2: GOLD FLASH

				TOLERANCE		<b>UMax</b> 东莞市友贸实业有限公司 <b>conn</b> DONGGUAN UMAXCONN ENTERPRISE LIMITED		TITLE: MINI PCI EXPRESS 5.2MM HEIGHT				
				LINEAR	ANGLES			PART NO. 91304-52-052RXXX				
				X.±0.40	X'.±	APPD: Jason	MAT'L:	DWG NO. C-91304-52				
				.X±0.30	.X'±	CHKD: Schumi	FINISH:		UNITS	SCALE	SHEET	REV
0	-----	Lei Songping	Jun,06,2019	.XX±0.20	.XX'±	DRWN: Lei Songping	Q'TY:		MM	1 : 1	2 OF 5	0
REV	ECN NO.	NAME	DATE	.XXX±0.15	.XXX'±							



-D- IS THE TOP SURFACE OF PCB.  
RECOMMENDED P.C. BOARD PATTERN LAYOUT FOR FULL CARD CONNECTOR (TOP VIEW)



-D- IS THE TOP SURFACE OF PCB.  
RECOMMENDED P.C. BOARD PATTERN LAYOUT FOR HALF CARD CONNECTOR (TOP VIEW)

REV	ECN NO.	NAME	DATE	TOLERANCE	
				LINEAR	ANGLES
0	----	Lei Songping	Jun,06,2019	.XX±	.XX°±
REV	ECN NO.	NAME	DATE	.XXX±	.XXX°±

**UMax conn** 东莞市友贸实业有限公司  
DONGGUAN UMAXCONN ENTERPRISE LIMITED

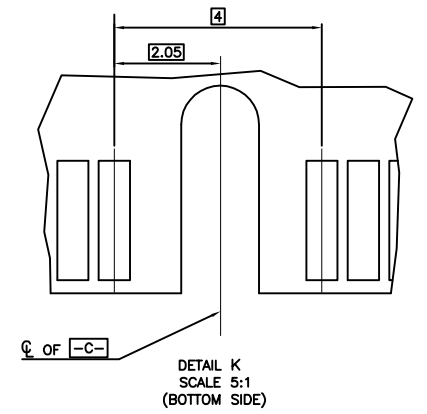
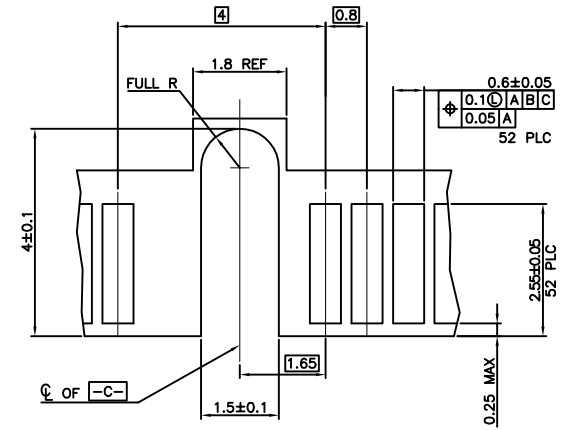
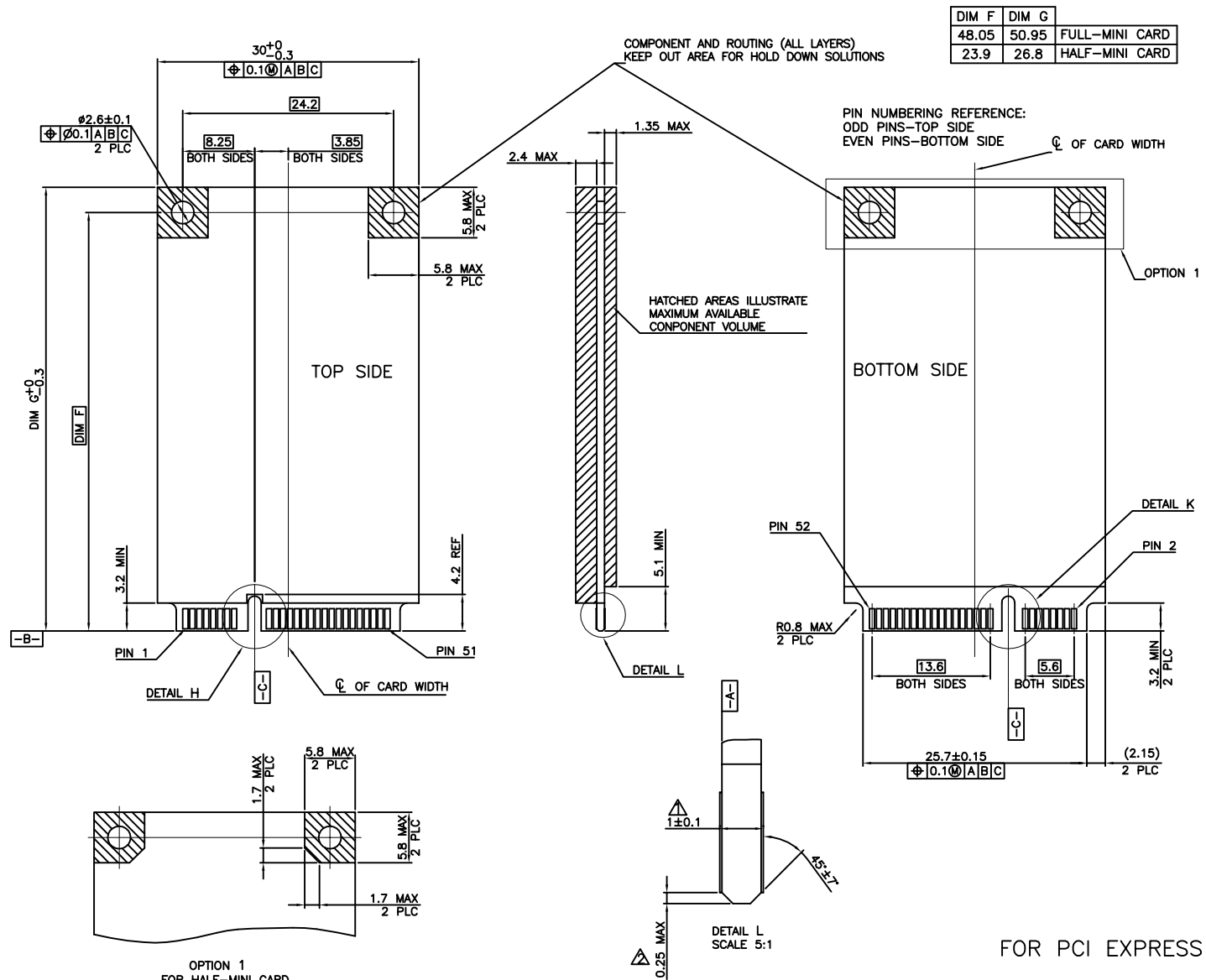
APPD: Jason    MAT'L:  
CHKD: Schumi    FINISH:  
DRWN: Lei Songping    Q'TY:

TITLE: MINI PCI EXPRESS 5.2MM HEIGHT

PART NO. 91304-52-052RXXX

DWG NO. C-91304-52

UNITS	SCALE	SHEET	REV
MM	1 : 1	3 OF 5	0



- NOTES:
- ▲ CARD THICKNESS APPLIES ACROSS TABS AND INCLUDES PLATING AND/OR METALLIZATION.
  - ▲ EDGE BEVEL MUST BE PRESENT AND FREE OF CUTTING BURRS FROM PCB AND CONTACT MATERIALS.

FOR PCI EXPRESS MINI CARD

OPTION 1  
FOR HALF-MINI CARD  
(TOP & BOTTOM SIDE)

TOLERANCE	
LINEAR	ANGLES
X.±	X'.±
.X±	.X'±
0	----
.XX±	.XX'±
.XXX±	.XXX'±

**UMax conn** 东莞市友贸实业有限公司  
DONGGUAN UMAXCONN ENTERPRISE LIMITED

APPD: Jason    MAT'L:

CHKD: Schumi    FINISH:

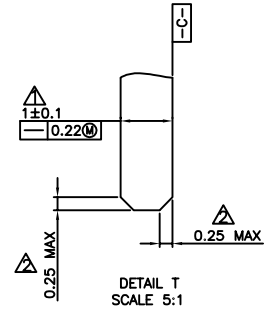
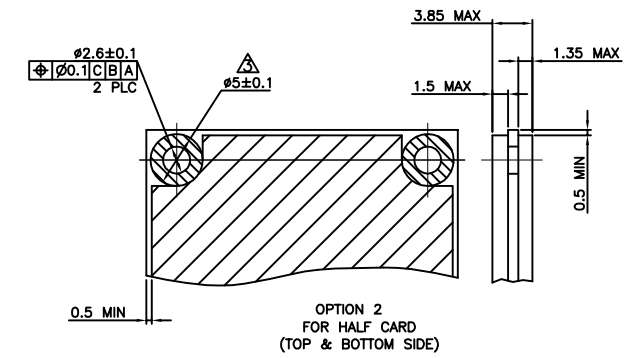
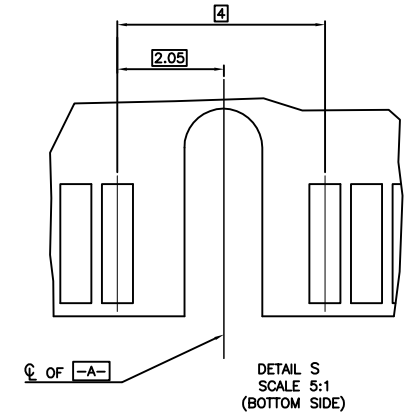
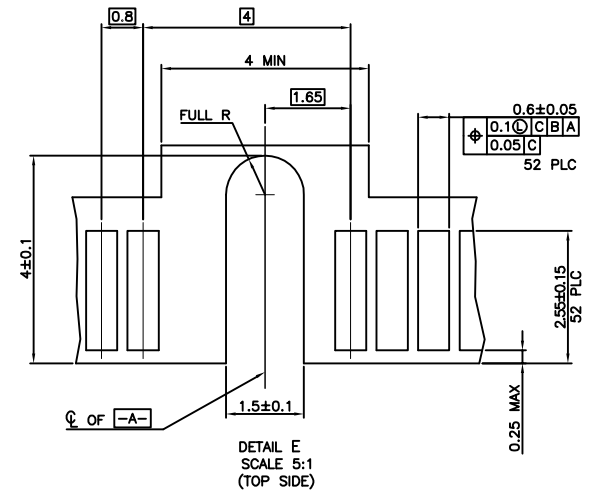
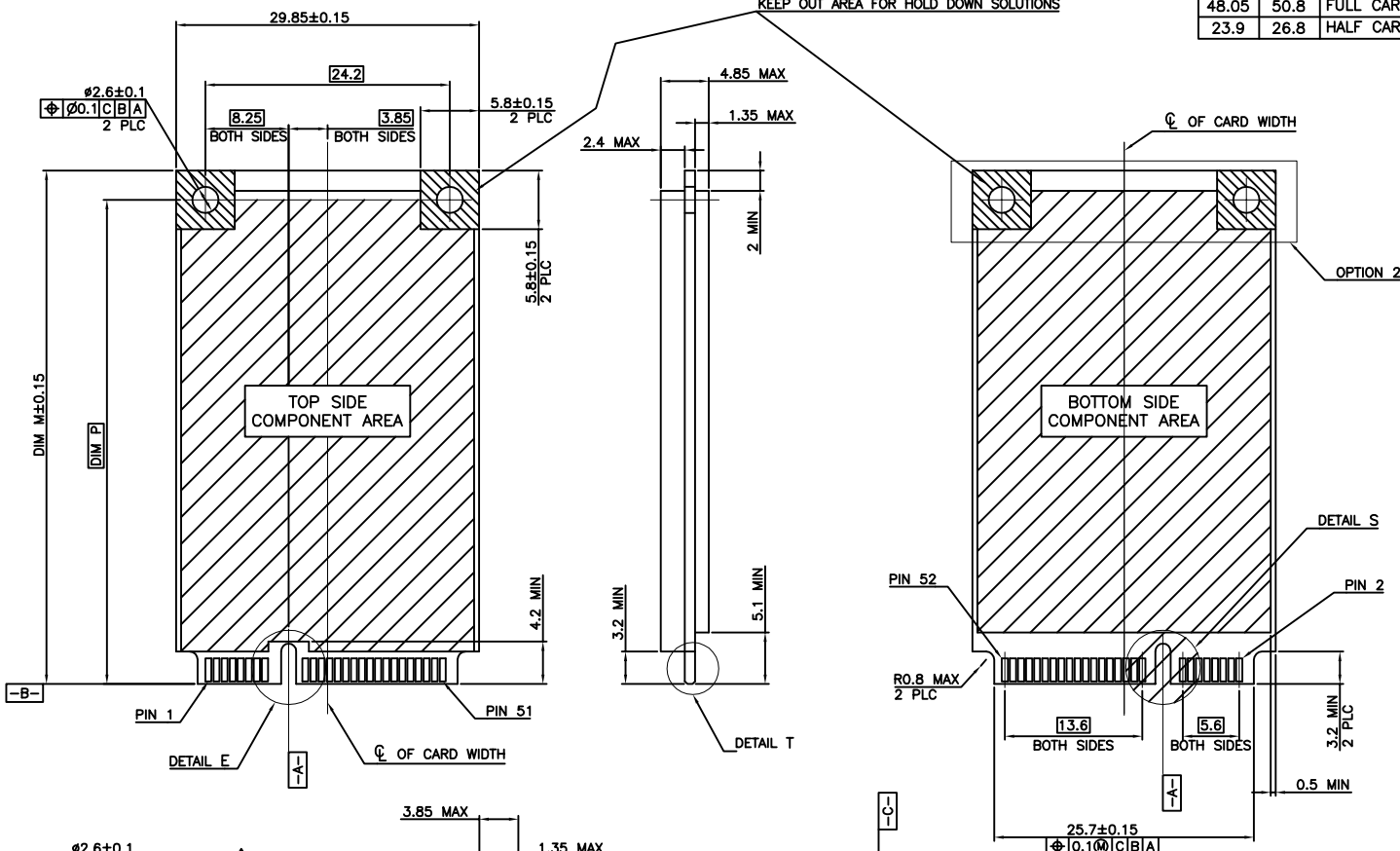
DRWN: Lei Songping    Q'TY:

TITLE: MINI PCI EXPRESS 5.2MM HEIGHT			
PART NO. 91304-52-052RXXX			
DWG NO. C-91304-52			
UNITS	SCALE	SHEET	REV
MM	1 : 1	4 OF 5	0

REV	ECN NO.	NAME	DATE
0	-----	Lei Songping	Jun,06,2019

DIM P	DIM M	
48.05	50.8	FULL CARD
23.9	26.8	HALF CARD

COMPONENT AND ROUTING (ALL LAYERS)  
KEEP OUT AREA FOR HOLD DOWN SOLUTIONS



- NOTES:
- △ CARD THICKNESS APPLIES ACROSS TABS AND INCLUDES PLATING AND/OR METALLIZATION.
  - △ EDGE BEVEL MUST BE PRESENT AND FREE OF CUTTING BURRS FROM PCB AND CONTACT MATERIALS.
  - △ COMPONENT AND ROUTING (TOP/BOTTOM LAYER) KEEP OUT AREA FOR HOLD DOWN SOLUTIONS.

FOR mSATA

				TOLERANCE		UMax conn 东莞市友贸实业有限公司 DONGGUAN UMAXCONN ENTERPRISE LIMITED	TITLE: MINI PCI EXPRESS 5.2MM HEIGHT			
				LINEAR	ANGLES		PART NO. 91304-52-052RXXX			
				X.±	X'.±	APPD: Jason	MAT'L:			DWG NO. C-91304-52
				.X±	.X'±	CHKD: Schumi	FINISH:			
0	----	Lei Songping	Jun,06,2019	.XX±	.XX'±	DRWN: Lei Songping	Q'TY:			
REV	ECN NO.	NAME	DATE	.XXX±	.XXX'±					

UNITS	SCALE	SHEET	REV

CUSTOMER