

1761987-9 ✓ ACTIVE

QSFP/QSFP+

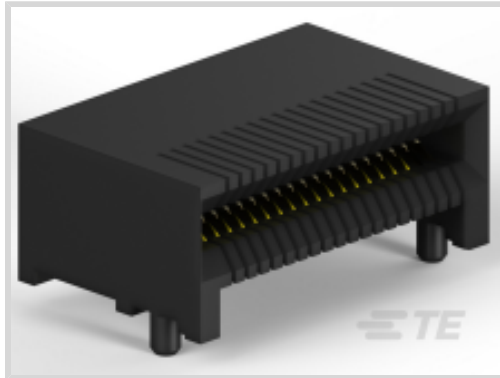
TE Internal #: 1761987-9

QSFP+, Connector, .8mm [.032in] Centerline, Signal, Operating Temperature Range -55 – 105 °C [-67 – 221 °F], Data Rate (Max) 14 Gb/s, 38 Position

[View on TE.com >](#)



Connectors > Pluggable IO Connectors & Cages



Pluggable I/O Product Type: **Connector**

Centerline (Pitch): **.8 mm [.032 in]**

Sealable: **No**

Circuit Application: **Signal**

Operating Temperature Range: **-55 – 105 °C [-67 – 221 °F]**

Features

Product Type Features

Pluggable I/O Product Type	Connector
Sealable	No
Form Factor	QSFP+

Configuration Features

Number of Positions	38
---------------------	----

Electrical Characteristics

Data Rate (Max)	14 Gb/s
-----------------	---------

Contact Features

Contact Mating Area Plating Material Thickness	.76 µm[30 µin]
Contact Mating Area Plating Material	Gold
PCB Contact Termination Area Plating Material	Tin
Contact Current Rating (Max)	.5 A

Termination Features

Termination Method to PCB	Surface Mount
---------------------------	---------------

Housing Features

Centerline (Pitch)	.8 mm[.032 in]
--------------------	----------------

Dimensions



PCB Thickness (Recommended)	1.45 mm [.057 in]
-----------------------------	-------------------

Usage Conditions

Operating Temperature Range	-55 – 105 °C [-67 – 221 °F]
-----------------------------	-----------------------------

Operation/Application

Circuit Application	Signal
---------------------	--------

Industry Standards

UL Flammability Rating	UL 94V-0
------------------------	----------

Packaging Features

Packaging Method	Tape
------------------	------

Product Compliance

[For compliance documentation, visit the product page on TE.com>](#)

EU RoHS Directive 2011/65/EU	Compliant
EU ELV Directive 2000/53/EC	Compliant
China RoHS 2 Directive MIIT Order No 32, 2016	No Restricted Materials Above Threshold
EU REACH Regulation (EC) No. 1907/2006	Current ECHA Candidate List: JUNE 2024 (241) Candidate List Declared Against: JUNE 2024 (241) Does not contain REACH SVHC
Halogen Content	Low Halogen - Br, Cl, F, I < 900 ppm per homogenous material. Also BFR/CFR/PVC Free
Solder Process Capability	Reflow solder capable to 260°C

Product Compliance Disclaimer

This information is provided based on reasonable inquiry of our suppliers and represents our current actual knowledge based on the information they provided. This information is subject to change. The part numbers that TE has identified as EU RoHS compliant have a maximum concentration of 0.1% by weight in homogenous materials for lead, hexavalent chromium, mercury, PBB, PBDE, DBP, BBP, DEHP, DIBP, and 0.01% for cadmium, or qualify for an exemption to these limits as defined in the Annexes of Directive 2011/65/EU (RoHS2). Finished electrical and electronic equipment products will be CE marked as required by Directive 2011/65/EU. Components may not be CE marked. Additionally, the part numbers that TE has identified as EU ELV compliant have a maximum concentration of 0.1% by weight in homogenous materials for lead, hexavalent chromium, and mercury, and 0.01% for cadmium, or qualify for an exemption to these limits as defined in the Annexes of Directive 2000/53/EC (ELV). Regarding the REACH Regulation, the information TE provides on SVHC in articles for this part number is based on the latest European Chemicals Agency (ECHA) 'Guidance on requirements for substances in articles' posted at this URL: <https://echa.europa.eu/guidance-documents/guidance-on-reach>

Compatible Parts




TE Part # CAT-C11-H5011
QSFP-Four SFP+ I/O Cable Assembly
30 AWG



TE Part # 1888631-1
Cage Assy PCI Hsink QSFP Thru



TE Part # 1888631-3
Cage Assy NW Hsink QSFP Thru Bezel



TE Part # 2007456-1
1x3 QSFP Kit Assy Bhnd Bzl,PCI



TE Part # 1888781-1
Cage Assy Behind Bezel QSFP



TE Part # 1888617-1
Cage Assy, QSFP, Through Bezel



TE Part # 1888631-2
Cage Assy SAN Hsink QSFP Thru Bezel



TE Part # 1888810-2
EMI/Dust Cover,XFP And QSFP



TE Part # 1888968-1
Cage Assy PCI Hsink QSFP Behind Bezel



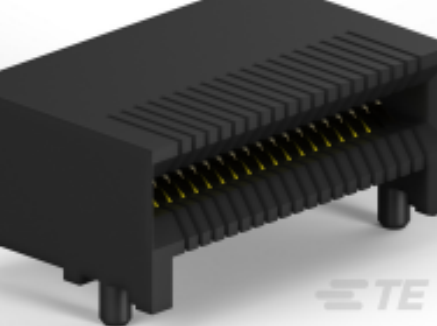
TE Part # 2110819-1
QSFP+ Enh EVERCLEAR PT Conn



TE Part # 1888674-1
Cage Assy, QSFP, Through Bezel



TE Part # 1888968-2
Cage Assy SAN Hsink QSFP Behind Bezel



TE Part # 1761987-5
Right Angle Receptacle 38 Posi



TE Part # 2007668-1
1x4 QSFP Cage Assy Behind Bzl, LP Holder



TE Part # 2057042-1
1x3 QSFP Kit Assy LP&HS, PCI



TE Part # 2057042-3
1x3 QSFP Kit Assy LP&HS, Networking



TE Part # 2057183-2
1x4 QSFP Kit Assy, LP& HS, SAN



TE Part # 2007625-1
1x4 QSFP Kit Assy Bhnd Bzl,PCI

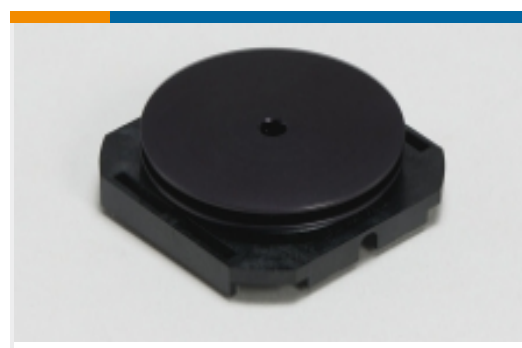


TE Part # 2007456-2
1x3 QSFP Kit Assy Bhnd Bzl,SAN



TE Part # 2007474-1
1x3 QSFP Cage Assy Behind Bzl

Also in the Series | **QSFP/QSFP+**



Heat Sinks(1)



Light Pipes(8)

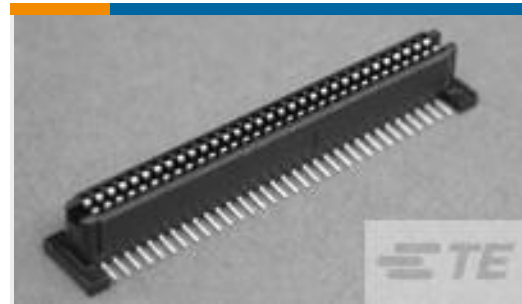
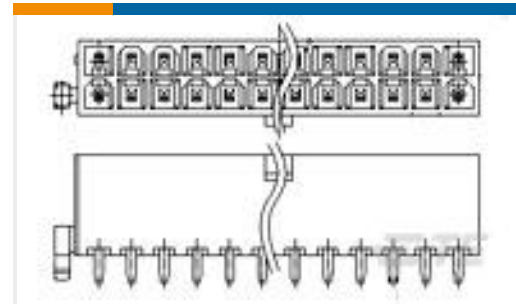


Pluggable I/O Cable Assemblies(13)



Pluggable IO Connectors & Cages(154)

Customers Also Bought

TE Part #5120521-1
1FHR,64,30A/S,S,N,S08,09,10TE Part #1367073-1
20 POS SMT CONN, SFP, 15AUTE Part #1-1775099-3
ATX PWR CONN 1 BDLK 24 POSTE Part #5223968-1
TE UPM R/A Header 3P STD Power,
LMMTE Part #1734248-5
1.0 FPC, ZIF V/T, SMT, 5PTE Part #9-2176307-8
RP 1E 0.1W 127K 0.1% 25PPM 5K RLTE Part #2329397-1
RECEPTACLE HM-EZD+, 2PAIRS
10COLUMNSTE Part #2354315-1
SFP+ 1X1 CAGE ASSY, ST, HSK, WO
KICK-OUT

Documents

CAD Files

Customer View Model

[ENG_CVM_CVM_1761987-9_A.2d_dxf.zip](#)

English

3D PDF

3D

Customer View Model

[ENG_CVM_CVM_1761987-9_A.3d_igs.zip](#)

English

Customer View Model

[ENG_CVM_CVM_1761987-9_A.3d_stp.zip](#)

English

By downloading the CAD file I accept and agree to the [Terms and Conditions](#) of use.

Datasheets & Catalog Pages

[1773408-1 Pluggable Input/Output Solutions catalog - QSFP section](#)

English



[1-1773717-7_PLUGGABLE_IO_QRG_CN](#)

English

[1-1773717-8_PLUGGABLEIO_QRG_TCN](#)

English

[1-1773717-9_HIGH_SPEED_IO_QRG_JA](#)

English

[4-1773455-5 - Quick Reference Guide QSFP/QSFP+ Solutions](#)

English

[Quad Small Form-factor Pluggable \(QSFP\) Products Datasheet 6-1773447-7](#)

English

Product Specifications

[Application Specification](#)

English

Instruction Sheets

[Instruction Sheet \(U.S.\)](#)

English

[Instruction Sheet \(U.S.\)](#)

English

Agency Approvals

[UL Report](#)

English