



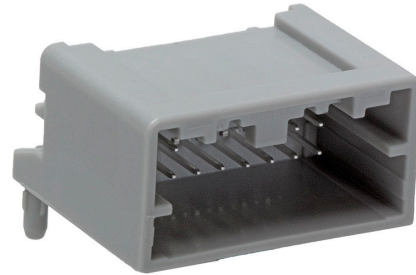
Part Number : [348260240](#)

Product Description : Mini50 Unsealed Right-Angle Header, Dual Row, 24 Circuit, Polarization Option A, 2.80mm Pin Length, Black, Tray

Series Number : 34826

Status : Active

Product Category : PCB Headers and Receptacles



Documents & Resources

Drawings

[348260240_sd.pdf](#)

[PK-31301-440-001.pdf](#)

3D Models and Design Files

[348260240_stp.zip](#)

Specifications

[AS-34791-020-CH-001.pdf](#)

[347910020-TS-000.pdf](#)

Product Environment Compliance

Compliance

GADSL/IMDS	Compliant with Exemption 44; 33
China RoHS	
EU ELV	Compliant per 2000/53/EC
Low-Halogen Status	Low-Halogen per IEC 61249-2-21
REACH SVHC	Not Contained per D(2024)4144-DC (27 June 2024)
EU RoHS	Compliant per EU 2015/863

[Multiple Part Product Compliance Statements](#)

- Eu RoHS
- REACH SVHC
- Low-Halogen

[Multiple Part Industry Compliance Documents](#)

- IPC 1752A Class C
- IPC 1752A Class D
- Molex Product Compliance Declaration
- IEC-62474
- chemSHERPA (xml)

EU RoHS Certificate of Compliance

Part Details

General

Status	Active
Category	PCB Headers and Receptacles
Series	34826
Description	Mini50 Unsealed Right-Angle Header, Dual Row, 24 Circuit, Polarization Option A, 2.80mm Pin Length, Black, Tray
Application	Automotive, Power, Signal, Wire-to-Board
Component Type	PCB Header
Product Family	Mini50 Connection Systems
Product Name	Mini50
UPC	887191402642

Electrical

Current - Maximum per Contact	4.0A (for reference only)
Voltage - Maximum	14V (typical operating)

Physical

Breakaway	No
Circuits (Loaded)	24
Circuits (maximum)	24
Color - Resin	Black
Durability (mating cycles max)	10
First Mate / Last Break	No
Glow-Wire Capable	No
Guide to Mating Part	No
Keying to Mating Part	Yes

Lock to Mating Part	Yes
Material - Metal	Brass
Material - Plating Mating	Tin
Material - Plating Termination	Tin
Material - Resin	High Temperature Thermoplastic
Net Weight	2.900/g
Number of Rows	2
Orientation	Right Angle
Packaging Type	Tray
PC Tail Length	2.80mm
PCB Locator	Yes
Pitch - Mating Interface	2.00mm
Polarized to Mating Part	Yes
Polarized to PCB	Yes
Temperature Range - Operating	-40° to +105°C
Termination Interface Style	Through Hole

Mates With / Use With

Mates with Part(s)

Description	Part Number
Mini50 Unsealed Dual Row Receptacle Housings	<u>34824</u>