



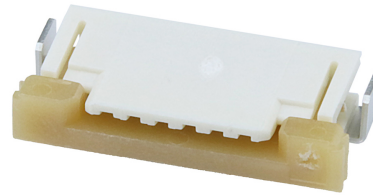
Part Number : [522070685](#)

Product Description : Easy-On FFC/FPC Connector, 1.00mm Pitch, Slider Series, Right-Angle, Top Contact, 2.70mm Height, 6 Circuits, Tin-Bismuth Plating

Series Number : 52207

Status : Active

Product Category : FFC / FPC Connectors



Documents & Resources

Drawings

[522070685_sd.pdf](#)

3D Models and Design Files

[522070685.dxf](#)

[522070685.pdf](#)

[522070685_stp.zip](#)

Specifications

[SPK-52207-002-001.pdf](#)

[PS-52207-047-001.pdf](#)

Product Environment Compliance

Compliance

GADSL/IMDS	Compliant with Exemption 44; 33
China RoHS	
EU ELV	Not Relevant
Low-Halogen Status	Not Low-Halogen per IEC 61249-2-21
REACH SVHC	Not Contained per D(2024)4144-DC (27 June 2024)
EU RoHS	Compliant per EU 2015/863

Multiple Part Product Compliance Statements

- Eu RoHS
- REACH SVHC
- Low-Halogen

Multiple Part Industry Compliance Documents

- IPC 1752A Class C
- IPC 1752A Class D
- Molex Product Compliance Declaration
- IEC-62474
- chemSHERPA (xml)

EU RoHS Certificate of Compliance

Part Details

General

Status	Active
Category	FFC / FPC Connectors
Series	52207
Description	Easy-On FFC/FPC Connector, 1.00mm Pitch, Slider Series, Right-Angle, Top Contact, 2.70mm Height, 6 Circuits, Tin-Bismuth Plating
Series Name	Slider
Product Name	Easy-On
UPC	822348117888

Agency

CSA	LR19980
UL	E29179

Electrical

Current - Maximum per Contact	1.0A
Voltage - Maximum	125V

Physical

Actuator Type	Slider
Circuits (Loaded)	6
Color - Resin	Natural
Contact Position	Top
Durability (mating cycles max)	30
Flammability	94V-0

Mated Height	2.70mm
Material - Metal	Phosphor Bronze
Material - Plating Mating	Tin-Bismuth
Material - Plating Termination	Tin-Bismuth
Material - Resin	Nylon
Net Weight	311.500/mg
Orientation	Right Angle
Packaging Type	Embossed Tape on Reel
PC Tail Length	2.00mm
PCB Locator	No
PCB Mounting	Surface Mount
PCB Retention	Yes
Pitch - Mating Interface	1.00mm
Pitch - Termination Interface	1.00mm
Polarized to PCB	Yes
Stackable	No
Temperature Range - Operating	-40° to +85°C
Wire/Cable Type	FFC/FPC

Mates With / Use With

Mates with Part(s)

Description	Part Number
1.00mm Pitch Premo-Flex FFC Jumpers	<u>15167</u>
1.00mm Pitch Premo-Flex FFC Jumpers	<u>15267</u>
1.00mm Pitch Premo-Flex FFC Jumpers	<u>98267</u>