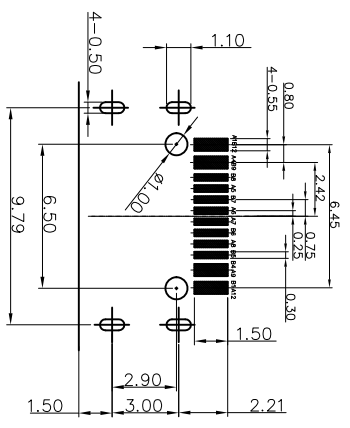
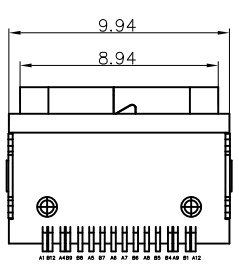
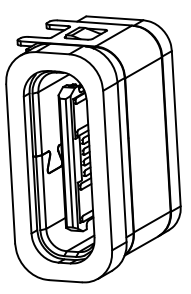
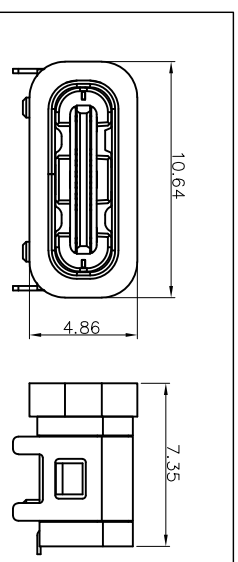
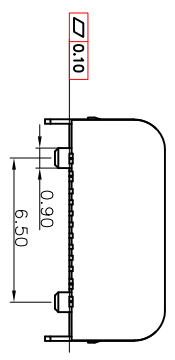
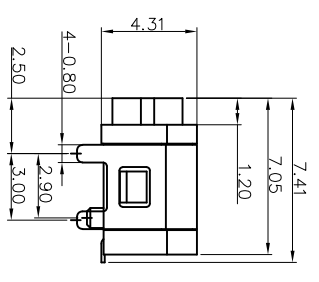
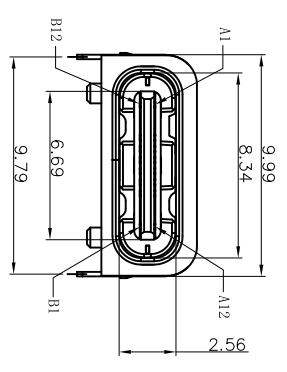


REV.	ECN. NO.	APPD.
A		



RECOMMENDED P.C.B. LAYOUT
TOLERANCE UNSPECIFIED ±0.05mm

- NOTES:
SPECIFICATION:
- CURRENT RATING: 3.0A MAX
 - VOLTAGE: 100 VAC
 - TEMPERATURE RANGE: -30 °C ~ 85 °C
 - CONTACT RESISTANCE: 40 MILLIONHM MAX
 - INSULATION RESISTANCE: 100 MEGOHMS MIN.
 - INSERTION FORCE: 5N~20N
 - UNMATING FORCE: 8N~20N
 - DURABILITY: 10,000 CYCLES
 - WATER PROOFNESS: THISPRODUCTIS BASED ON IPX7.

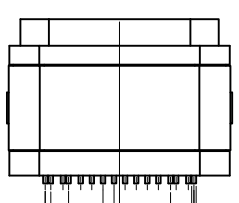
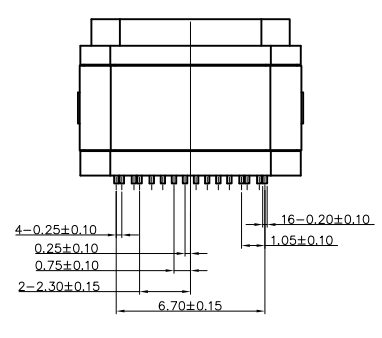


带防水圈示意图

防水圈	硅胶	IPCS
SHELL	STAINLESS STEEL	IPCS
SHIELDING PLATE	STAINLESS STEEL	IPCS
CONTACT	COPPER ALLOY	TIN/AU/Ni Plated
SHELL HOUSING	HIGH TEMPERATURE PLASTIC	BLACK
HOUSING	HIGH TEMPERATURE PLASTIC	BLACK
DESCRIPTION	MATERIAL	REMARKS
		QTY

NAME(INTENDED USE)	
PART NO.(INTENDED USE)	
APPD:	SUNNY
CHKD:	USA
DR:	ZOE
	2022-06-10
TITLE:	TYPE C 16P板上型防水L=7.05
DWG NO.:	24001-UCAF039-X

A1	GND	B12	GND
A4	VBUS	B9	VBUS
A5	CC1	B8	SBU2
A6	DP1	B7	DN2
A7	DN1	B6	DP2
A8	SBU1	B5	CC2
A9	VBUS	B4	VBUS
A12	GND	B1	GND
PIN	SIGNAL NAME	PIN	SIGNAL NAME



TYPE C CONNECTOR	QTY
X. ±0.30	X°. ±5°
.X ±0.20	.X° ±2°
.XX ±0.10	.XX° ±1°
.XXX ±0.05	.XXX° ±0.5°
FINISH	
UNITS	mm
MATL	

NAME(INTENDED USE)	
PART NO.(INTENDED USE)	
APPD:	SUNNY
CHKD:	USA
DR:	ZOE
	2022-06-10
TITLE:	TYPE C 16P板上型防水L=7.05
DWG NO.:	24001-UCAF039-X
SCALE	1/1
SHEET	1/1
REV.	A