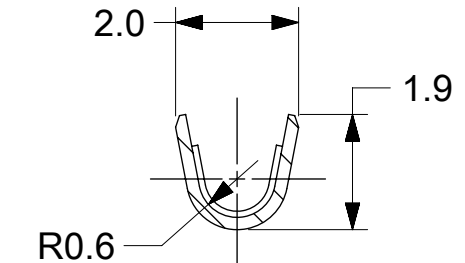
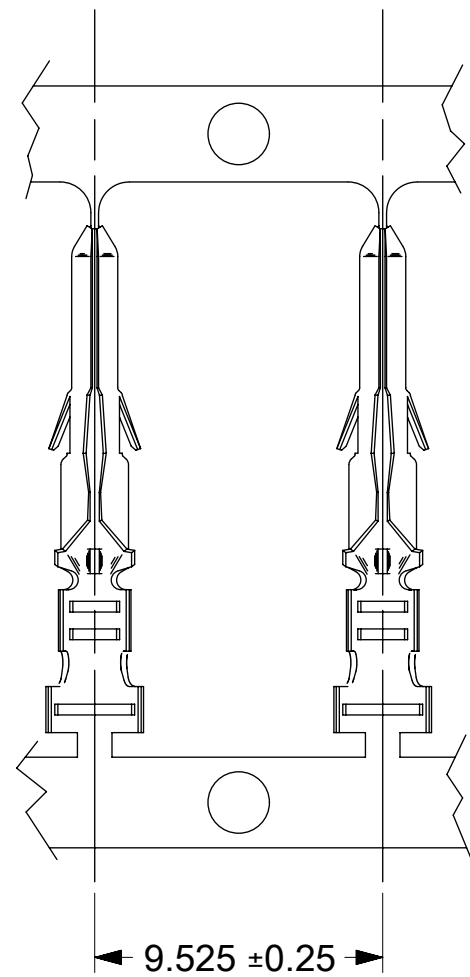


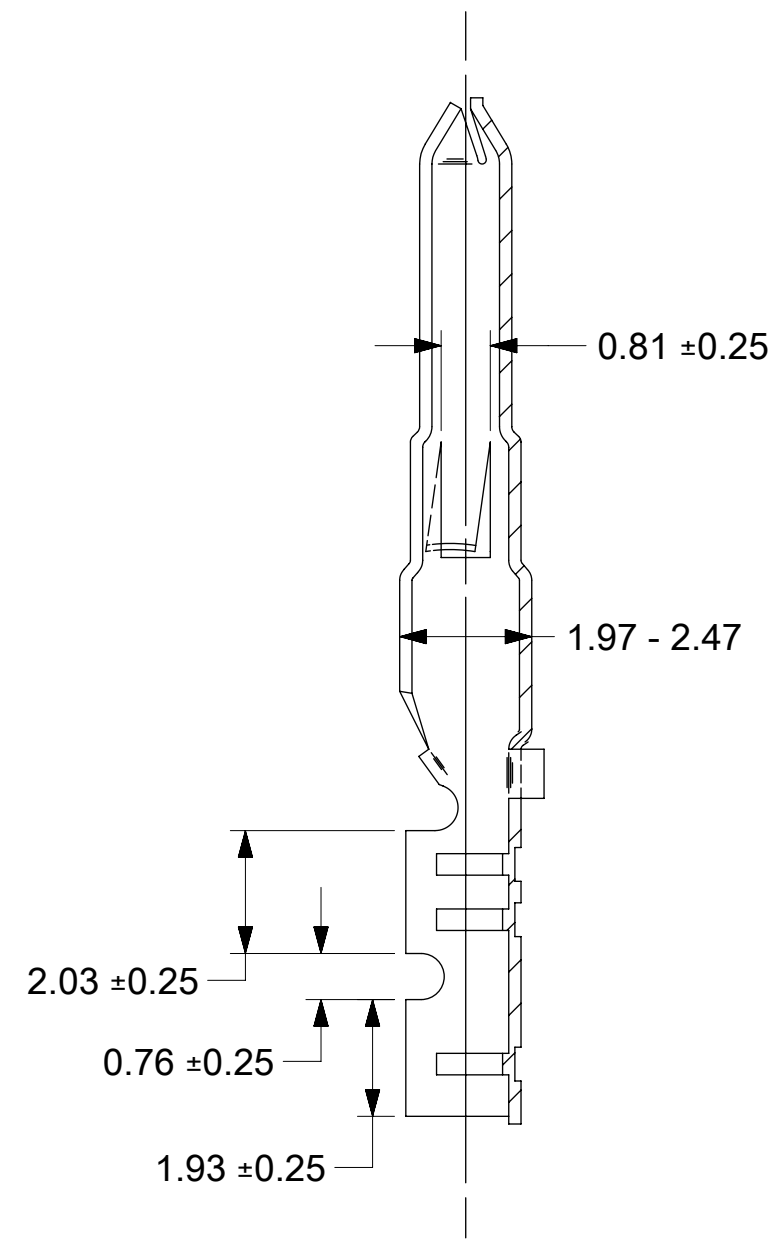
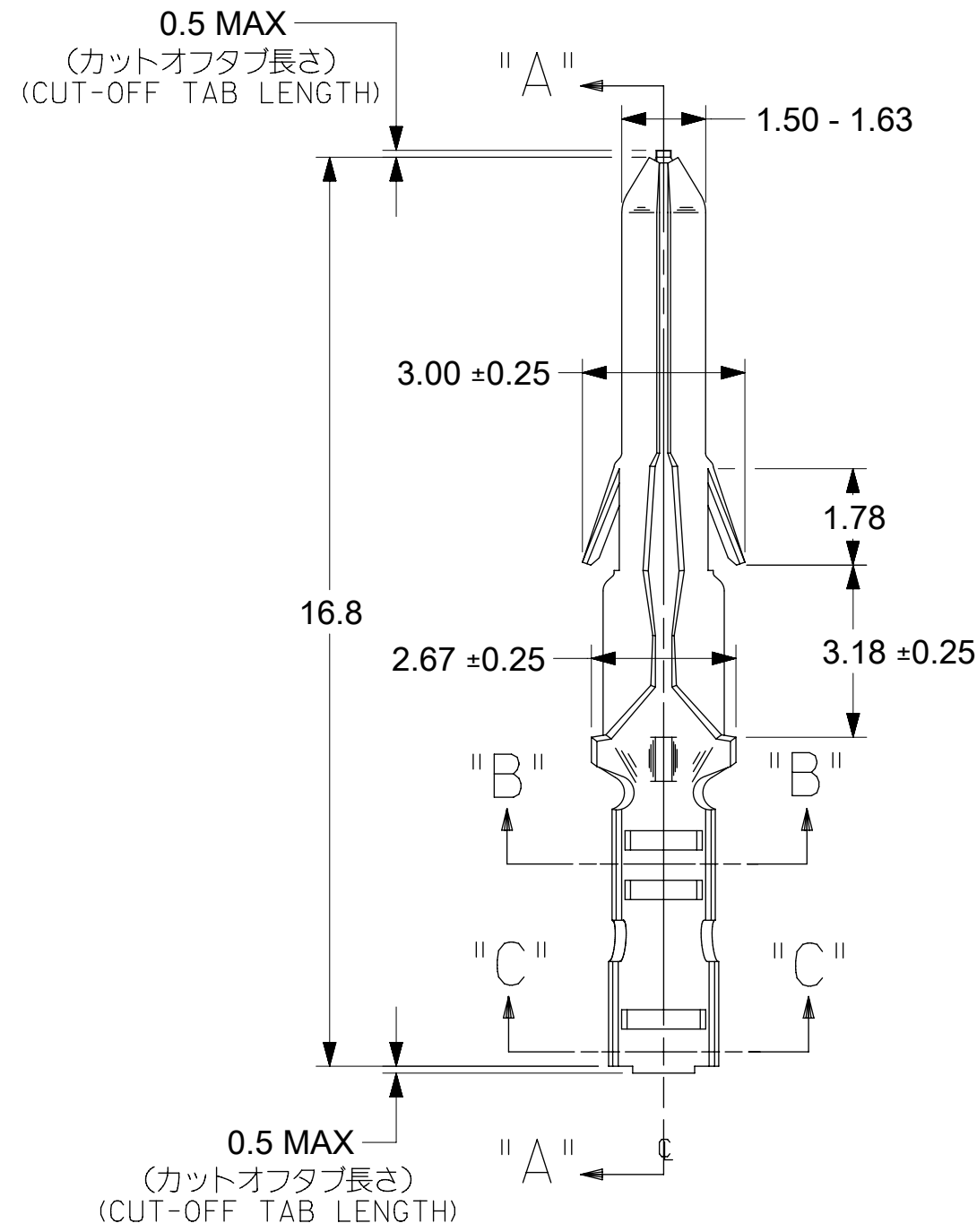
SECTION "B-B"



SECTION "C-C"



CHAIN FORM  
SCALE: 4:1



SECTION "A-A"

NOTES:

1. MATERIAL: BRASS
2. FINISHES: SEE CHART
3. PRODUCT SPECIFICATION: PS-02-0-6
4. PACKAGE INFORMATION: CHAIN: 18540000-PK  
CHAIN WITH INTERLEAF: 18540001-PK
5. TERMINAL FOR USE WITH (1.57)/.062 DIA. SERIES HOUSINGS AND WILL ACCEPT 22 THRU 28 AWG WIRE WITH 1.1-1.5 INSULATION DIAMETER.
6. PARTS CONFORM TO CLASS B REQUIREMENTS OF COSMETIC SPECIFICATION PS-45499-002.

一般公差 : ±0.4  
GENERAL TOLERANCES: ±0.4

0.9 μm MIN. TIN OVER 0.5 μm MIN. COPPER	46999-0999	1854T1	CHAIN WITH INTERLEAF
	39-00-0280	1854T	CHAIN
PLATING	EDP. NO.	ENG. NO.	FORM

THIS DRAWING CONTAINS INFORMATION THAT IS PROPRIETARY TO MOLEX ELECTRONIC TECHNOLOGIES, LLC AND SHOULD NOT BE USED WITHOUT WRITTEN PERMISSION

DIMENSION UNITS	SCALE	CURRENT REV DESC: ADD 46999-0999		
mm	8:1	<p><b>molex</b></p> <p>CRIMP TERMINAL, MALE .062 DIA. FOR 24-30 AWG WIRE</p> <p>PRODUCT CUSTOMER DRAWING</p>		
GENERAL TOLERANCES (UNLESS SPECIFIED)				
ANGULAR TOL ± °				
4 PLACES ±				
4 PLACES ±	EC NO: 742179	2023/03/01		
3 PLACES ±	DRWN: MKIPPER	2023/03/13		
2 PLACES ±	CHK'D: MKIPPER	2023/03/13		
1 PLACE ±	APPR: FSMITH	2023/03/13		
0 PLACES ±	INITIAL REVISION:			
DRAFT WHERE APPLICABLE MUST REMAIN WITHIN DIMENSIONS		DRWN: MKIPPER	2019/03/07	DOCUMENT NUMBER
THIRD ANGLE PROJECTION		APPR: FSMITH	2020/06/05	18540001-SD
DRAWING		SERIES	MATERIAL NUMBER	CUSTOMER
C-SIZE		1854	SEE TABLE	GENERAL MARKET
SHEET NUMBER		1 OF 1		

材料 MATERIAL	黄銅 BRASS 0.2 t
仕上げ FINISH	—
適用電線範囲 WIRE RANGE	AWG#22-#28
被覆外径 INS. RANGE	φ 1.1~1.5