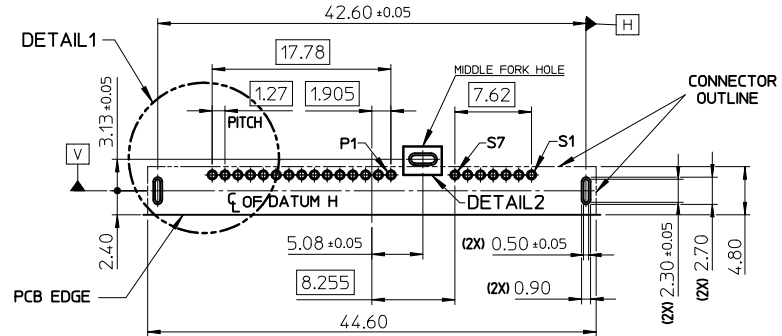
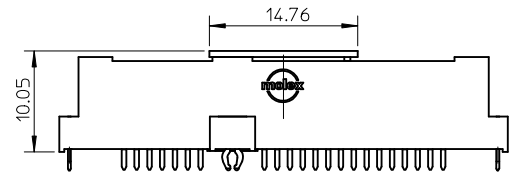
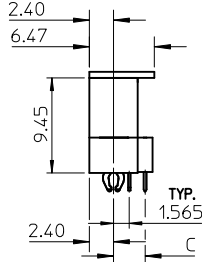
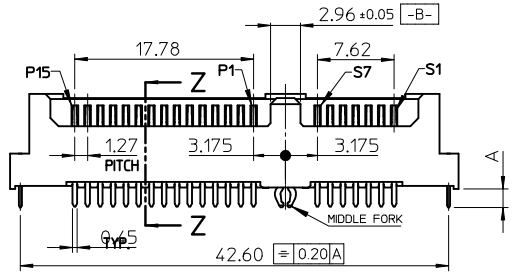
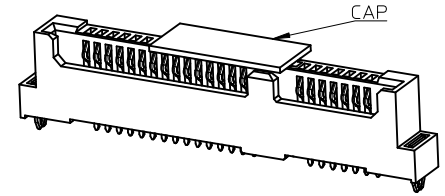
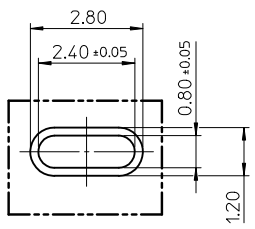


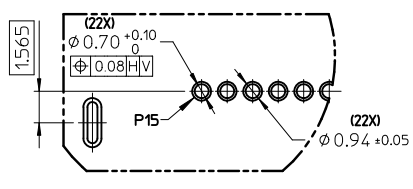
SECTION Z-Z



RECOMMENDED PCB LAYOUT
(PCB THICKNESS=1.2MM ± 0.05MM)



DETAIL2



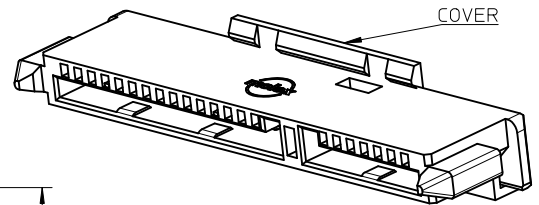
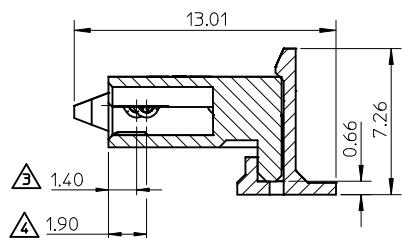
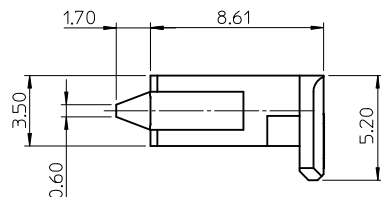
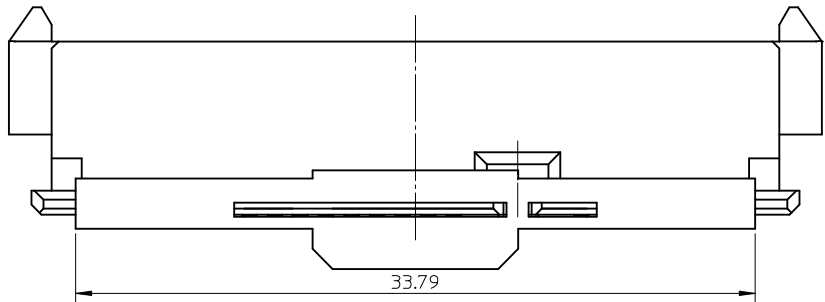
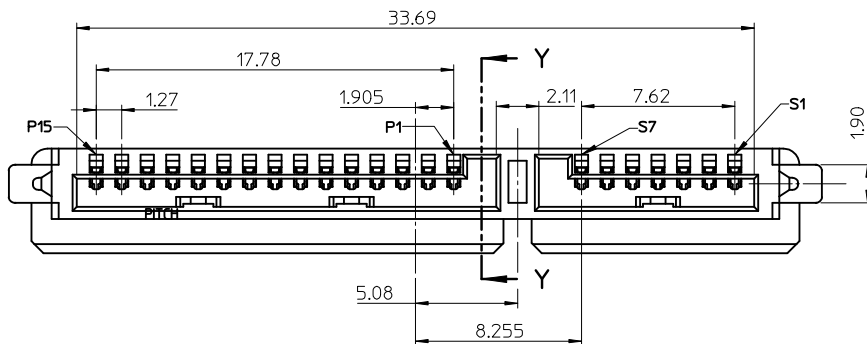
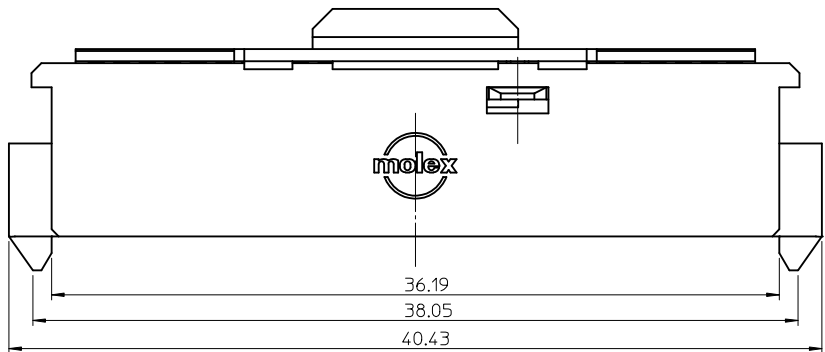
DETAIL1

- NOTES :
- MATERIAL :
HOUSING : HIGH TEMPERATURE THERMOPLASTIC, UL94V-0, BLACK
TERMINAL : COPPER ALLOY
NUT : COPPER ALLOY
 - PLATING :
TERMINAL :
CONTACT AREA : GOLD PLATING SPEC REFER TO TABLE.
SOLDER AREA : MATTE TIN PLATING, 1.0 MICRONS MIN.
UNDERPLATING : NICKEL 1.25 MICRONS MIN OVER ALL.
NUT :
SOLDER AREA : MATTE TIN PLATING, 1.0 MICRONS MIN
UNDER PLATING: NICKEL 1.25 MICROMETER MIN OVER ALL.
 - PRODUCT SPEC: PS-47657-001.
 - COMPLIANT TO RoHS DIRECTIVE 2002/95/EC AND ELV 2000/53/EC.

P/N	GOLD PLATING SPEC	DIM'A'	DIM'B'	DIM'C'	MIDDLE FORK/HOLE
47662-2000	Au 0.1 MICRONS MIN	1.83	1.75	3.13	WITH
47662-2001	Au 0.25 MICRONS MIN				
47662-2002	Au 0.76 MICRONS MIN				
47662-2100	Au 0.1 MICRONS MIN	1.20	1.20	N/A	WITHOUT
47662-2101	Au 0.25 MICRONS MIN				
47662-2102	Au 0.76 MICRONS MIN				

REVISED EC NO: SH2011-0021 DRAWN: GLLI CHKD: APPR: RZHANG	2010/11/29 2010/12/03	DESCRIPTION REV	QUALITY SYMBOLS	GENERAL TOLERANCES (UNLESS SPECIFIED)	DIMENSION STYLE MM ONLY	SCALE 2:1	DESIGN UNITS METRIC	THIRD ANGLE PROJECTION		
			$F_A=0$ $F_C=0$ $F_P=0$	4 PLACES ± --- ± --- 3 PLACES ± --- ± --- 2 PLACES ± 0.20 ± --- 1 PLACE ± 0.25 ± --- ANGULAR ± 3 °	DRAWN BY DIXON LI CHECKED BY STARY SONG APPROVED BY RZHANG MATERIAL NO.	DATE 2008/12/24 DATE 2008/12/24 DATE 2010/12/03	TITLE REMOVABLE SATA 22 PINS RESERVE DIP TYPE			
			DRAFT WHERE APPLICABLE MUST REMAIN WITHIN DIMENSIONS				SEE CHART	MOLEX INCORPORATED DOCUMENT NO. SD-47662-100		SHEET NO. 1 OF 3
			THIS DRAWING CONTAINS INFORMATION THAT IS PROPRIETARY TO MOLEX INCORPORATED AND SHOULD NOT BE USED WITHOUT WRITTEN PERMISSION							

10 9 8 7 6 5 4 3 2 1



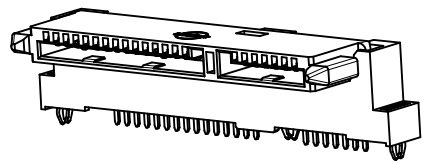
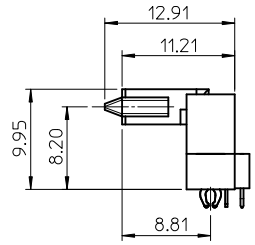
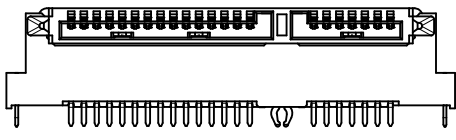
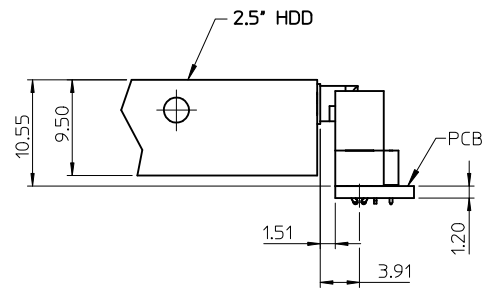
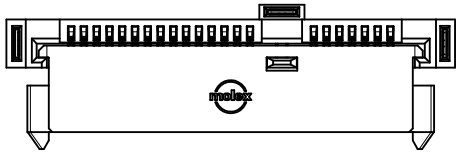
NOTES :
 1. MATERIAL :
 HOUSING : HIGH TEMPERATURE THERMOPLASTIC, UL94V-0, BLACK
 TERMINAL : COPPER ALLOY
 2. PLATING :
 TERMINAL :
 CONTACT AREA : GOLD PLATING, SPEC REFER TO CHART.
 UNDERPLATING : NICKEL 1.25 MICRONS MIN.
 △ FOR PIN P4 & P12 ONLY.
 △ FOR ALL OTHER PINS.

P/N	CONTACT GOLD PLATING SPEC
47662-1000	Au 0.1 MICRONS MIN
47662-1001	Au 0.25 MICRONS MIN
47662-1002	Au 0.76 MICRONS MIN

REVISED EC NO: SH2011-0021 DRW:GLL1 CHKD: APPR:RZHANG 2010/11/29 2010/12/03	QUALITY SYMBOLS F=0 F=0 F=0	GENERAL TOLERANCES (UNLESS SPECIFIED)		DIMENSION STYLE MM ONLY		SCALE 4:1	DESIGN UNITS METRIC	THIRD ANGLE PROJECTION	
		4 PLACES	± ---	± ---	DRAWN BY	DATE	TITLE		
		3 PLACES	± ---	± ---	CHECKED BY	DATE	REMOVABLE SATA 22 PINS RESERVE DIP TYPE		
		2 PLACES	± 0.20	± ---	STARY SONG	2008/12/24	MOLEX INCORPORATED		
1 PLACE	± 0.25	± ---	APPROVED BY	DATE	DOCUMENT NO.				
ANGULAR ± 3 °		DRAFT WHERE APPLICABLE MUST REMAIN WITHIN DIMENSIONS		MATERIAL NO. SEE CHART		SD-47662-100		SHEET NO. 2 OF 3	
THIS DRAWING CONTAINS INFORMATION THAT IS PROPRIETARY TO MOLEX INCORPORATED AND SHOULD NOT BE USED WITHOUT WRITTEN PERMISSION									

9 8 7 6 5 4 3 2 1

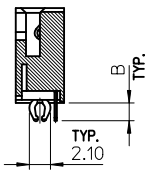
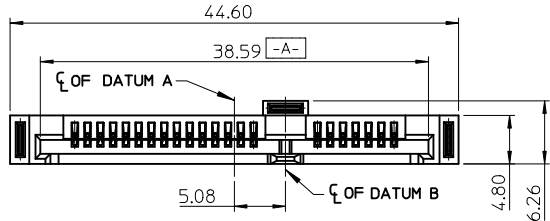
10 9 8 7 6 5 4 3 2 1



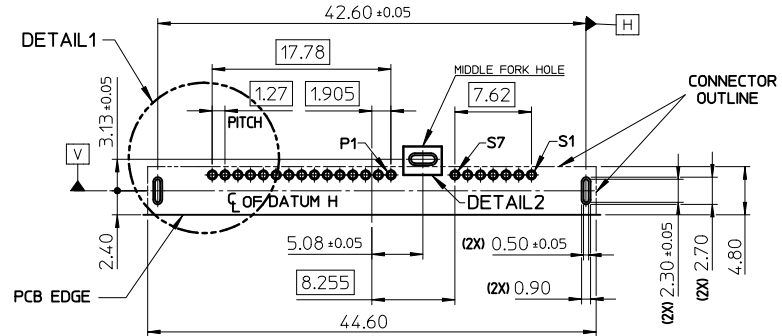
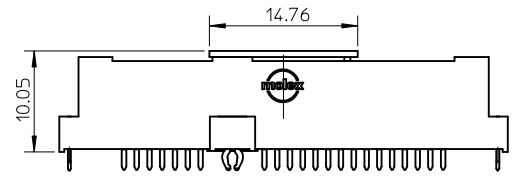
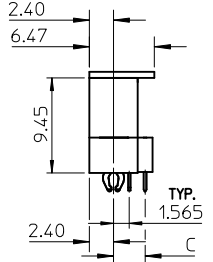
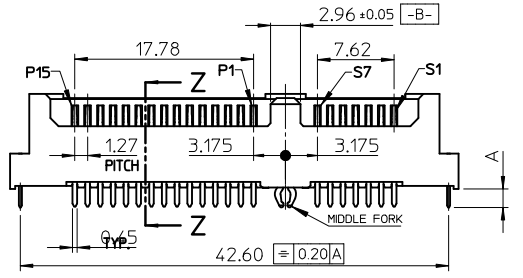
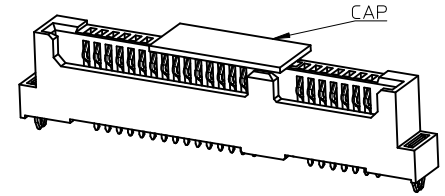
ASSEMBLY DRAWING

REVISED EC NO: SH2011-0021 DRWG:GLL CHKD: APPR:RZHANG REV	2010/11/29 2010/12/03	QUALITY SYMBOLS $\nabla_F=0$ $\nabla_E=0$ $\nabla_B=0$	GENERAL TOLERANCES (UNLESS SPECIFIED)		DIMENSION STYLE MM ONLY		SCALE 2:1	DESIGN UNITS METRIC	THIRD ANGLE PROJECTION		
				4 PLACES \pm --- \pm --- 3 PLACES \pm --- \pm --- 2 PLACES \pm 0.20 \pm --- 1 PLACE \pm 0.25 \pm ---	mm INCH	DRAWN BY DIXON LI	DATE 2008/12/24	TITLE REMOVABLE SATA 22 PINS RESERVE DIP TYPE ASSEMBLY			
				ANGULAR \pm 3 °	DRAFT WHERE APPLICABLE MUST REMAIN WITHIN DIMENSIONS	CHECKED BY STARY SONG	DATE 2008/12/24	APPROVED BY RZHANG	DATE 2010/12/03	MOLEX INCORPORATED	
						MATERIAL NO. SEE SHEET 1 & 2	DOCUMENT NO. SD-47662-100	SHEET NO. 3 OF 3			

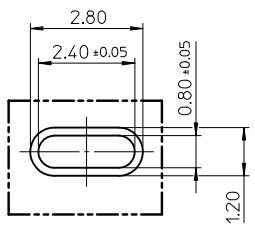
9 8 7 6 5 4 3 2 1



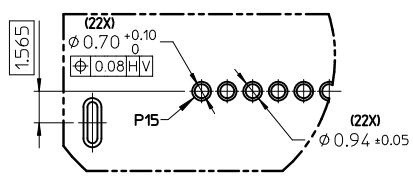
SECTION Z-Z



RECOMMENDED PCB LAYOUT
(PCB THICKNESS=1.2MM ± 0.05MM)



DETAIL2

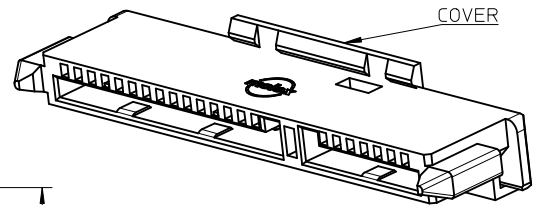
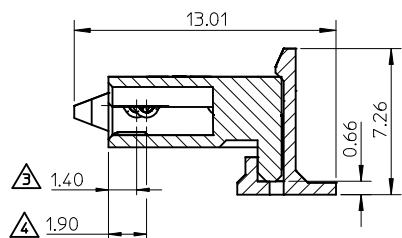
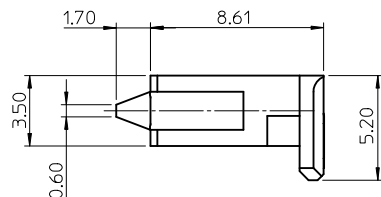
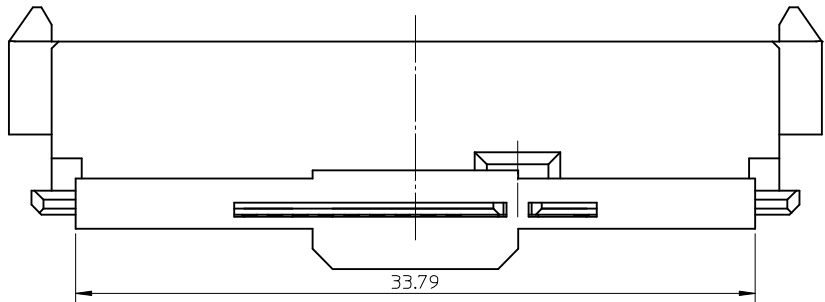
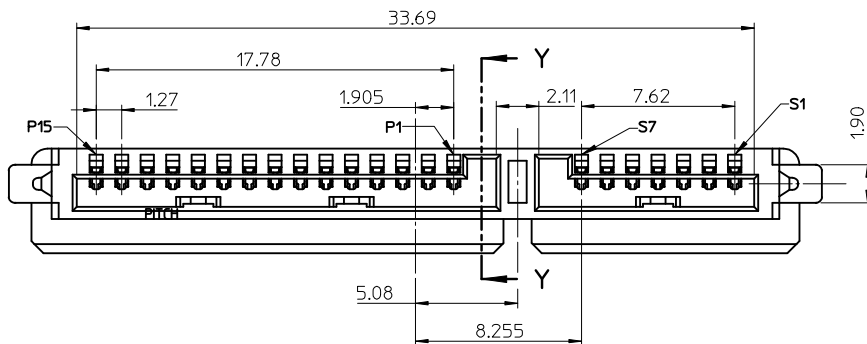
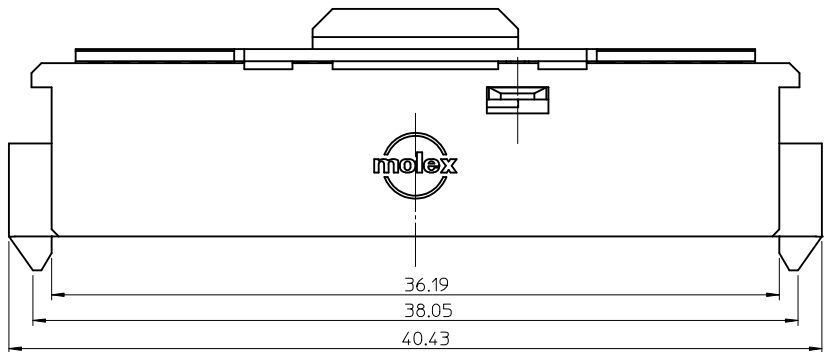


DETAIL1

- NOTES :
- MATERIAL :
HOUSING : HIGH TEMPERATURE THERMOPLASTIC, UL94V-0, BLACK
TERMINAL : COPPER ALLOY
NUT : COPPER ALLOY
 - PLATING :
TERMINAL :
CONTACT AREA : GOLD PLATING SPEC REFER TO TABLE.
SOLDER AREA : MATTE TIN PLATING, 1.0 MICRONS MIN.
UNDERPLATING : NICKEL 1.25 MICRONS MIN OVER ALL.
NUT :
SOLDER AREA : MATTE TIN PLATING, 1.0 MICRONS MIN
UNDER PLATING: NICKEL 1.25 MICROMETER MIN OVER ALL.
 - PRODUCT SPEC: PS-47657-001.
 - COMPLIANT TO RoHS DIRECTIVE 2002/95/EC AND ELV 2000/53/EC.

P/N	GOLD PLATING SPEC	DIM'A'	DIM'B'	DIM'C'	MIDDLE FORK/HOLE
47662-2000	Au 0.1 MICRONS MIN	1.83	1.75	3.13	WITH
47662-2001	Au 0.25 MICRONS MIN				
47662-2002	Au 0.76 MICRONS MIN				
47662-2100	Au 0.1 MICRONS MIN	1.20	1.20	N/A	WITHOUT
47662-2101	Au 0.25 MICRONS MIN				
47662-2102	Au 0.76 MICRONS MIN				

REVISED EC NO: SH2011-0021 DRAWING: L1 CHKD: APPR: RZHANG	QUALITY SYMBOLS F _A =0 F _C =0 F _P =0	GENERAL TOLERANCES (UNLESS SPECIFIED)		DIMENSION STYLE MM ONLY		SCALE 2:1	DESIGN UNITS METRIC	THIRD ANGLE PROJECTION	
			mm	INCH	DRAWN BY DIXON LI	DATE 2008/12/24	TITLE REMOVABLE SATA 22 PINS RESERVE DIP TYPE		
		4 PLACES	± ---	± ---	CHECKED BY STARY SONG	DATE 2008/12/24	MOLEX INCORPORATED		
		3 PLACES	± ---	± ---	APPROVED BY RZHANG	DATE 2010/12/03	DOCUMENT NO. SD-47662-100	SHEET NO. 1 OF 3	
		ANGULAR ± 3 °	DRAFT WHERE APPLICABLE MUST REMAIN WITHIN DIMENSIONS		SIZE A3	THIS DRAWING CONTAINS INFORMATION THAT IS PROPRIETARY TO MOLEX INCORPORATED AND SHOULD NOT BE USED WITHOUT WRITTEN PERMISSION			



NOTES :

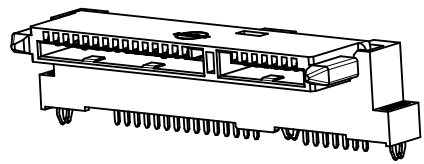
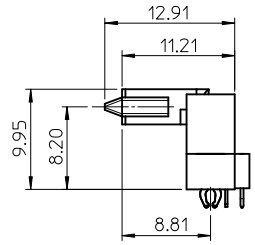
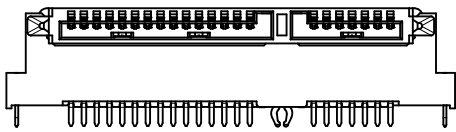
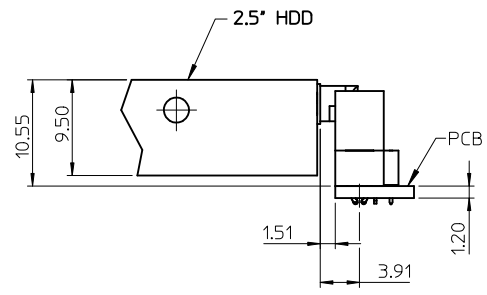
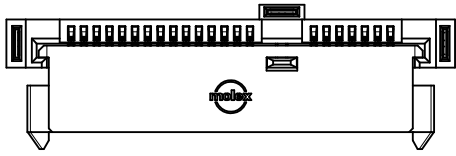
- MATERIAL :
HOUSING : HIGH TEMPERATURE THERMOPLASTIC, UL94V-0, BLACK
TERMINAL : COPPER ALLOY
- PLATING :
TERMINAL :
CONTACT AREA : GOLD PLATING, SPEC REFER TO CHART.
UNDERPLATING : NICKEL 1.25 MICRONS MIN.

△ FOR PIN P4 & P12 ONLY.
△ FOR ALL OTHER PINS.

P/N	CONTACT GOLD PLATING SPEC
47662-1000	Au 0.1 MICRONS MIN
47662-1001	Au 0.25 MICRONS MIN
47662-1002	Au 0.76 MICRONS MIN

REVISED EC NO: SH2011-0021 DRWG:GLL1 CHKD: APPR:RZHANG REV	DESCRIPTION 2010/11/29 2010/12/03	QUALITY SYMBOLS	GENERAL TOLERANCES (UNLESS SPECIFIED)	DIMENSION STYLE	SCALE	DESIGN UNITS	THIRD ANGLE PROJECTION															
		$\nabla = 0$ $\nabla = 0$ $\nabla = 0$	<table border="1"> <thead> <tr> <th></th> <th>mm</th> <th>INCH</th> </tr> </thead> <tbody> <tr> <td>4 PLACES</td> <td>± ---</td> <td>± ---</td> </tr> <tr> <td>3 PLACES</td> <td>± ---</td> <td>± ---</td> </tr> <tr> <td>2 PLACES</td> <td>± 0.20</td> <td>± ---</td> </tr> <tr> <td>1 PLACE</td> <td>± 0.25</td> <td>± ---</td> </tr> </tbody> </table>		mm	INCH	4 PLACES	± ---	± ---	3 PLACES	± ---	± ---	2 PLACES	± 0.20	± ---	1 PLACE	± 0.25	± ---	MM ONLY	4:1	METRIC	
			mm	INCH																		
		4 PLACES	± ---	± ---																		
3 PLACES	± ---	± ---																				
2 PLACES	± 0.20	± ---																				
1 PLACE	± 0.25	± ---																				
DRAFT WHERE APPLICABLE MUST REMAIN WITHIN DIMENSIONS	DRAWN BY DIXON LI CHECKED BY STARY SONG APPROVED BY RZHANG MATERIAL NO.	DATE 2008/12/24 DATE 2008/12/24 DATE 2010/12/03	TITLE REMOVABLE SATA 22 PINS RESERVE DIP TYPE	MOLEX INCORPORATED DOCUMENT NO.	SHEET NO. 2 OF 3																	
SEE CHART		THIS DRAWING CONTAINS INFORMATION THAT IS PROPRIETARY TO MOLEX INCORPORATED AND SHOULD NOT BE USED WITHOUT WRITTEN PERMISSION																				

10 9 8 7 6 5 4 3 2 1



ASSEMBLY DRAWING

REVISED EC NO: SH2011-0021 DRWG:GLL CHKD: APPR:RZHANG REV:	2010/11/29 2010/12/03	QUALITY SYMBOLS $\nabla_F=0$ $\nabla_E=0$ $\nabla_B=0$	GENERAL TOLERANCES (UNLESS SPECIFIED)		DIMENSION STYLE MM ONLY		SCALE 2:1	DESIGN UNITS METRIC	THIRD ANGLE PROJECTION		
			4 PLACES \pm --- \pm --- 3 PLACES \pm --- \pm --- 2 PLACES \pm 0.20 \pm --- 1 PLACE \pm 0.25 \pm ---	mm INCH	DRAWN BY DIXON LI	DATE 2008/12/24	TITLE REMOVABLE SATA 22 PINS RESERVE DIP TYPE ASSEMBLY				
			ANGULAR \pm 3 °	DRAFT WHERE APPLICABLE MUST REMAIN WITHIN DIMENSIONS		CHECKED BY STARY SONG	DATE 2008/12/24	MOLEX INCORPORATED			
				SEE SHEET 1 & 2		APPROVED BY RZHANG	DATE 2010/12/03	MATERIAL NO. SEE SHEET 1 & 2	DOCUMENT NO. SD-47662-100	SHEET NO. 3 OF 3	

9 8 7 6 5 4 3 2 1