

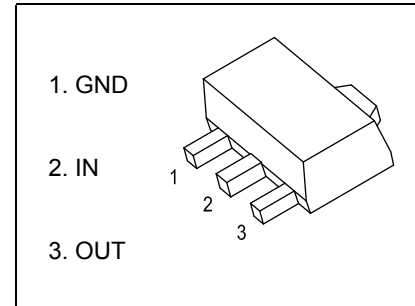
SOT-89 Plastic-Encapsulate Voltage Regulators

79L05 Three-terminal positive voltage regulator

SOT-89-3L

FEATURES

- Maximum output current
 I_{OM} : 0.1A
- Output voltage
 V_O : -5V
- Continuous total dissipation
 P_D : 0.6 W ($T_a = 25^\circ\text{C}$)



ABSOLUTE MAXIMUM RATINGS (Operating temperature range applies unless otherwise specified)

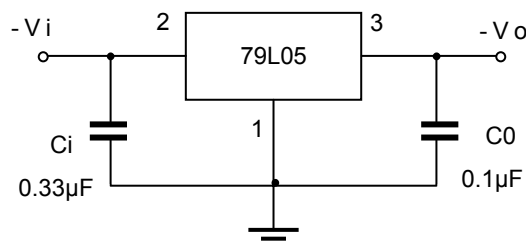
Parameter	Symbol	Value	Unit
Input Voltage	V_i	-35	V
Thermal Resistance from Junction to Ambient	$R_{\theta JA}$	208.3	$^\circ\text{C}/\text{W}$
Operating Junction Temperature Range	T_{OPR}	0~+150	$^\circ\text{C}$
Storage Temperature Range	T_{STG}	-65~+150	$^\circ\text{C}$

ELECTRICAL CHARACTERISTICS AT SPECIFIED VIRTUAL JUNCTION TEMPERATURE ($V_i = -10\text{V}$, $I_o = 40\text{mA}$, $C_i = 0.33\mu\text{F}$, $C_o = 0.1\mu\text{F}$, unless otherwise specified)

Parameter	mbol	Test conditions	Mj	Tnd	Max	Unit	
Output Voltage	V_o	25°C	-4.80	-5.0	-5.2	V	
		0-125 $^\circ\text{C}$	$-7\text{V} \leq V_i \leq -20\text{V}$, $I_o = 1\text{mA} \sim 40\text{mA}$	-4.75	-5.0	-5.25	V
			$I_o = 1\text{mA} \sim 70\text{mA}$	-4.75	-5.0	-5.25	V
Load Regulation	ΔV_o	$I_o = 1\text{mA} \sim 100\text{mA}$, 25°C		20	60	mV	
		$I_o = 1\text{mA} \sim 40\text{mA}$, 25°C		10	30	mV	
Line Regulation	ΔV_o	$-7\text{V} \leq V_i \leq -20\text{V}$, 25°C		15	150	mV	
		$-8\text{V} \leq V_i \leq -20\text{V}$, 25°C		12	100	mV	
Quiescent Current	I_q	25°C			6	mA	
Quiescent Current Change	ΔI_q	$-8\text{V} \leq V_i \leq -20\text{V}$, 0-125 $^\circ\text{C}$			1.5	mA	
	ΔI_q	$1\text{mA} \leq I_o \leq 40\text{mA}$, 0-125 $^\circ\text{C}$			0.1	mA	
Output Noise Voltage	V_N	10Hz $\leq f \leq$ 100KHz, 25°C		40		$\mu\text{V}/V_o$	
Ripple Rejection	RR	$-8\text{V} \leq V_i \leq -18\text{V}$, $f = 120\text{Hz}$, 0-125 $^\circ\text{C}$	41	49		dB	
Dropout Voltage	V_d	25°C		1.7		V	

* Pulse test.

TYPICAL APPLICATION

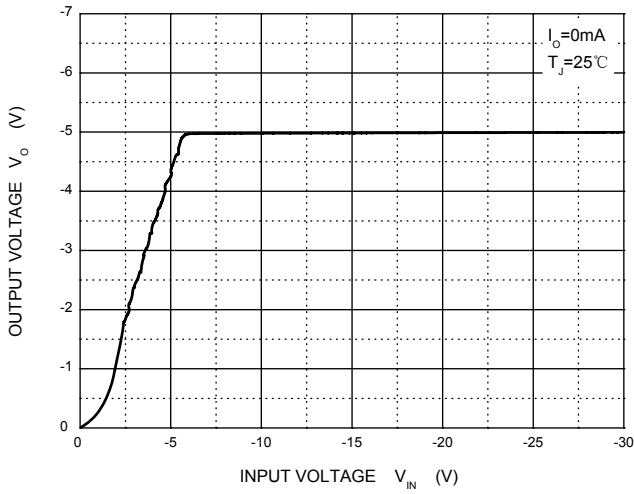


Note: Bypass capacitors are recommended for optimum stability and transient response and should be located as close as possible to the regulators.

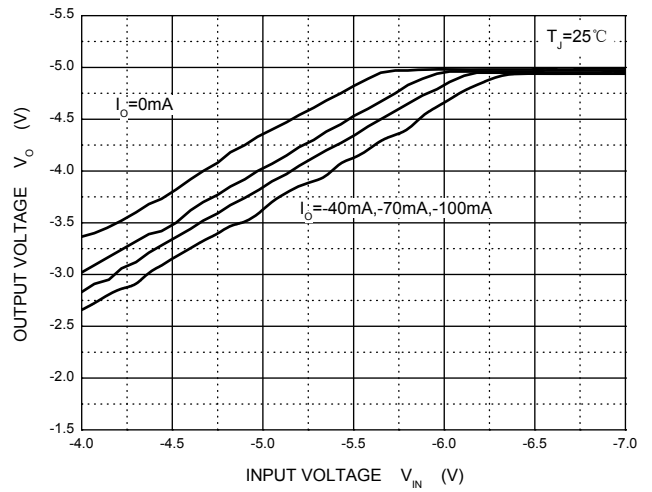


Typical Characteristics

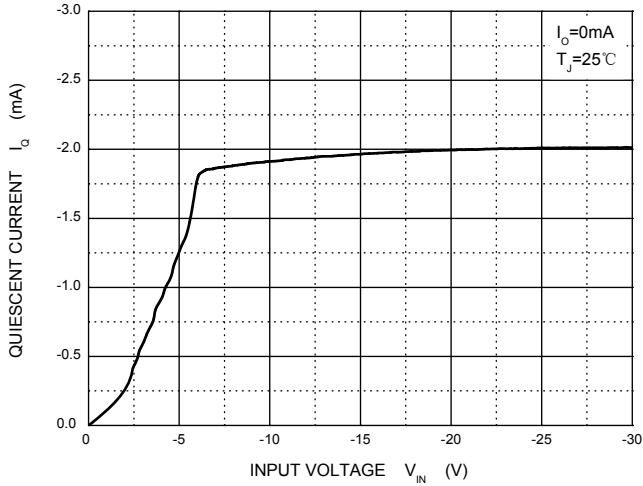
Output Characteristics



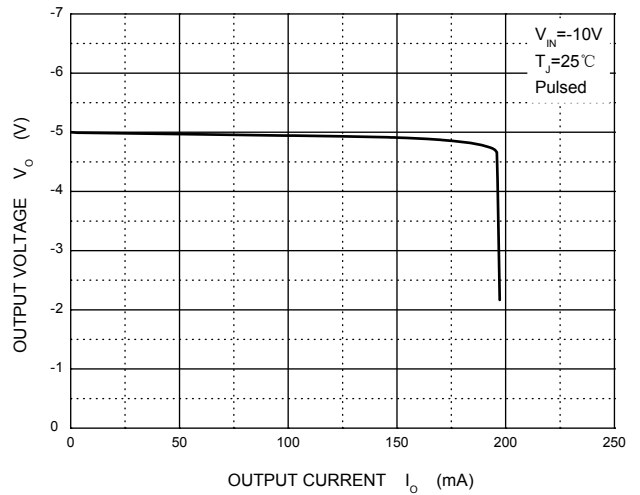
Dropout Characteristics



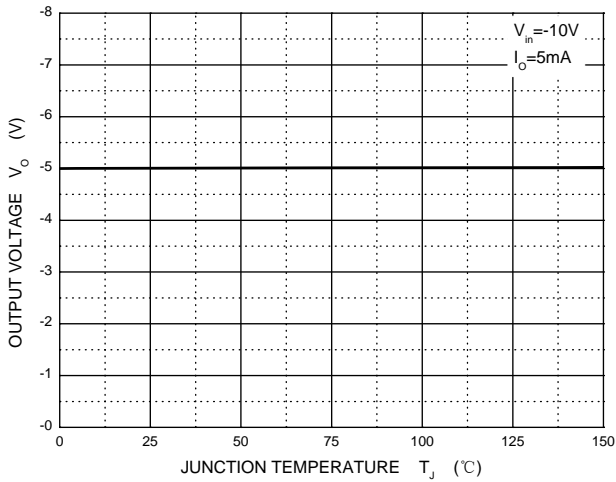
Quiescent Current vs Input Voltage



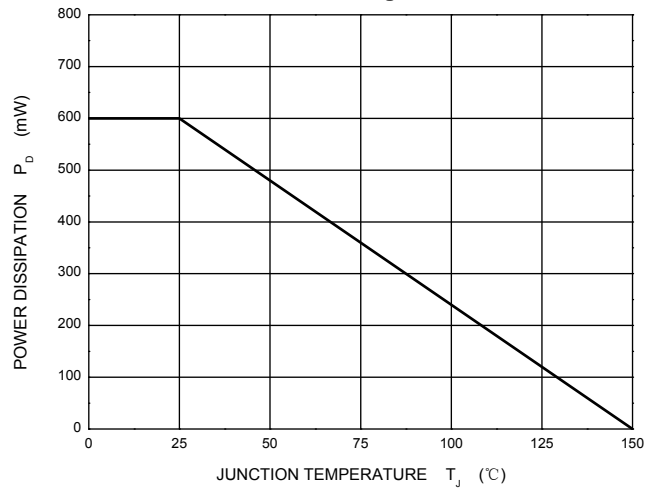
Current Cut-off Grid Voltage



Output Voltage vs Junction Temperature

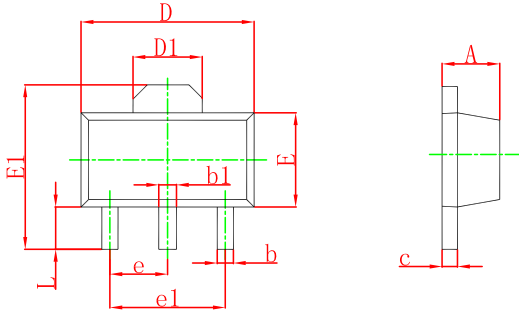


Power Derating Curve



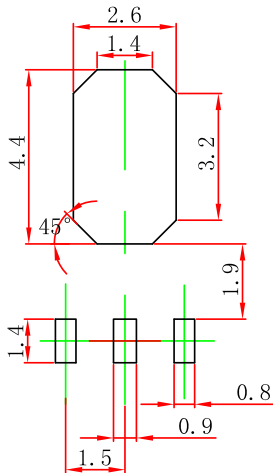
Outlitne Drawing

SOT-89-3L Package Outline Dimensions



Symbol	Dimensions In Millimeters		Dimensions In Inches	
	Min	Max	Min	Max
A	1.400	1.600	0.055	0.063
b	0.320	0.520	0.013	0.020
b1	0.400	0.580	0.016	0.023
c	0.350	0.440	0.014	0.017
D	4.400	4.600	0.173	0.181
D1	1.550 REF.		0.061 REF.	
E	2.300	2.600	0.091	0.102
E1	3.940	4.250	0.155	0.167
e	1.500 TYP.		0.060 TYP.	
e1	3.000 TYP.		0.118 TYP.	
L	0.900	1.200	0.035	0.047

SOT-89-3L Suggested Pad Layout



- Note:
1. Controlling dimension: in/millimeters.
 2. General tolerance: ±0.05mm.
 3. The pad layout is for reference purposes only.

PACKAGE SPECIFICATIONS

Package	Reel Size	Reel DIA. (mm)	Q'TY/Reel (pcs)	Box Size (mm)	QTY/Box (pcs)	Carton Size (mm)	G.W.(Kg)
SOT-89-3L	7'	330	1000	203×203×195	40000	438×438×220	180000

Important Notice and Disclaimer

Microdiode Electronics (Jiangsu) reserves the right to make changes to this document and its products and specifications at any time without notice. Customers should obtain and confirm the latest product information and specifications before final design, purchase or use.

Microdiode Electronics (Jiangsu) makes no warranty, representation or guarantee regarding the suitability of its products for any particular purpose, not does Microdiode Electronics (Jiangsu) assume any liability for application assistance or customer product design. Microdiode Electronics (Jiangsu) does not warrant or accept any liability with products which are purchased or used for any unintended or unauthorized application.

No license is granted by implication or otherwise under any intellectual property rights of Microdiode Electronics (Jiangsu).

Microdiode Electronics (Jiangsu) products are not authorized for use as critical components in life support devices or systems without express written approval of Microdiode Electronics (Jiangsu).