



B0520W THRU B0540W

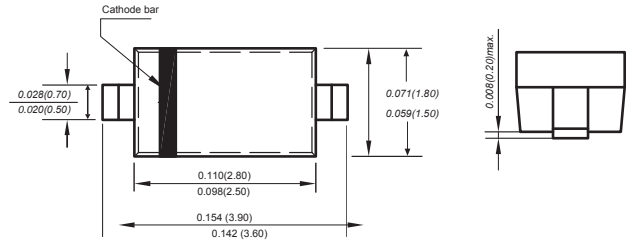
Reverse Voltage 20-40 Volts Forward Current - 0.5 Ampere

SCHOTTKY DIODES

Features

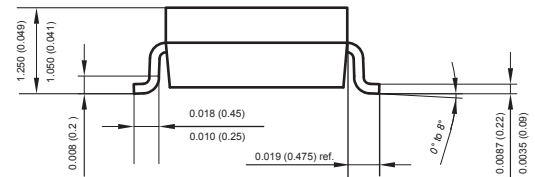
- ◆ Low forward voltage drop
- ◆ Guard ring construction for transient protection
- ◆ High conductance
- ◆ Also available in lead free version

SOD-123



Mechanical Data

Case: JEDEC SOD-123 molded plastic body
 Terminals: Plated leads solderable per MIL-STD-750, Method 2026
 Polarity: Polarity symbols marked on case
 Weight: 0.00056 ounce, 0.016 grams
 Marking: B0520W:R2, B0530W:R3, B0540W:R4



Dimensions in inches and (millimeters)

Absolute Maximum Ratings at 25 °C

Parameter	Symbols	B0520W	B0530W	B0540W	Units
Maximum Repetitive Peak Reverse Voltage	V_{RRM}	20	30	40	V
Maximum RMS voltage	V_{RMS}	14	21	28	V
Average rectified output current	I_0		0.5		A
Voltage rate of change	dv/dt		1000		v/us
Non-repetitive Peak Forward Surge Current at 8.3ms	I_{FSM}		25		A
Power dissipation	P_d		410		mW
Typical Thermal Resistance ⁽¹⁾	$R_{\theta JA}$		200		°C/W
Operating and Storage Temperature Range	T_j, T_{stg}		-55 ~ +150		°C

(1) P.C.B. mounted with 2.0" X 2.0" (5 X 5 cm) copper pad areas.

Characteristics at Ta= 25 °C

Parameter	Symbols	B0520W	B0530W	B0540W	Units
Reverse Breakdown Voltage at I_R at 250uA at 130uA at 20uA	$V_{(BR)R}$	20	30	40	V
Maximum Forward Voltage at I_F at 0.1A at 0.5A at 1A	V_F	0.330 0.390 —	0.375 0.430 —	— 0.510 0.620	V
Peak Reverse Current at VR at 10V at 15V at 20V at 30V at 40V	I_R	75 — 250 — —	— 20 — 130 —	— — 10 — 20	uA
Typical Junction Capacitance	C_j		170		pF
Reverse recovery time $I_F=I_R=10mA, I_{rr}=0.1X I_R, R_L=100\Omega$	trr			4	ns



B0520W THRU B0540W

Reverse Voltage 20-40 Volts Forward Current - 0.5 Ampere

Typical Characteristics

Fig.1 Forward Current Derating Curve

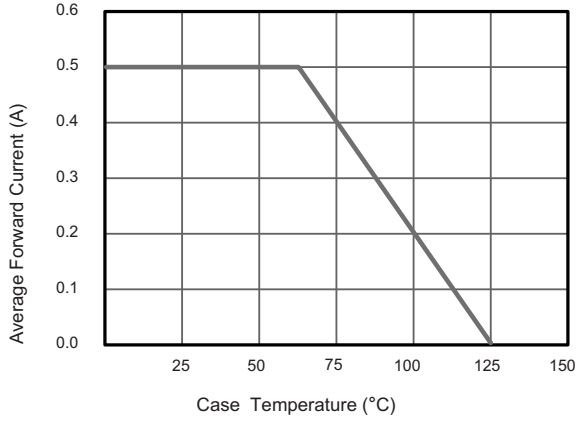


Fig.2 Typical Reverse Characteristics

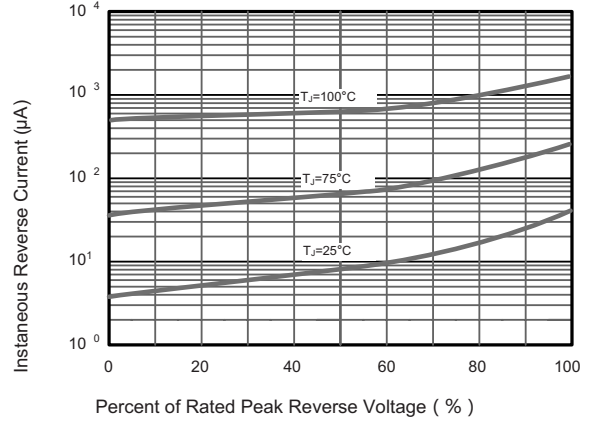


Fig.3 TYPICAL FORWARD VOLTAGE

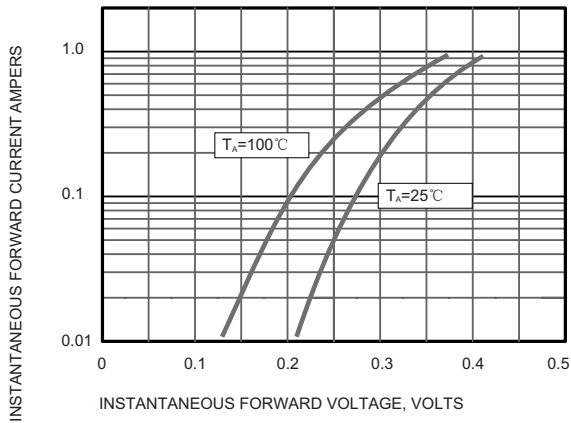


Fig.4 Typical Junction Capacitance

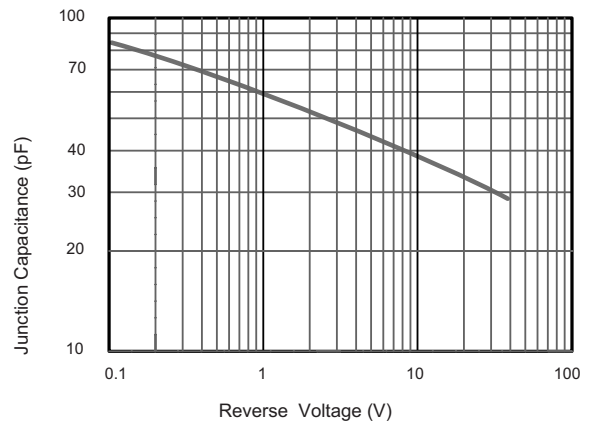


Fig.5 Maximum Non-Repetitive Peak Forward Surge Current

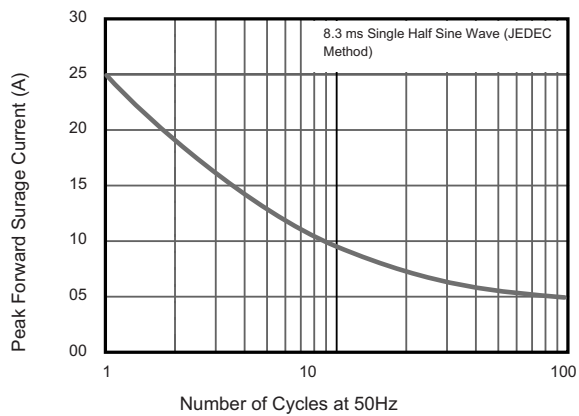
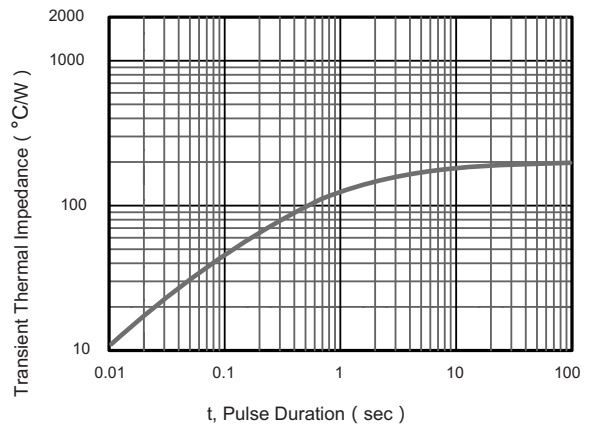


Fig.6 Typical Transient Thermal Impedance



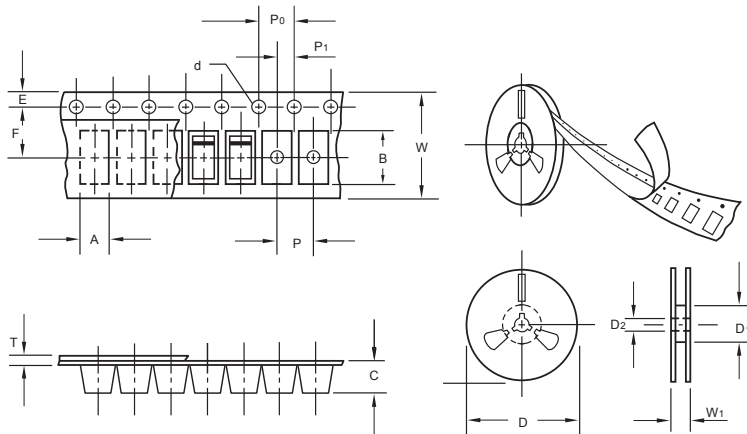
The curve above is for reference only.



B0520W THRU B0540W

Reverse Voltage 20-40 Volts Forward Current - 0.5 Ampere

Packing information



unit:mm

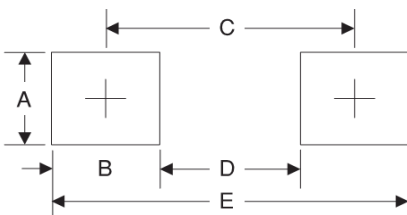
Item	Symbol	Tolerance	SOD-123
Carrier width	A	0.1	2.1
Carrier length	B	0.1	4.0
Carrier depth	C	0.1	1.60
Sprocket hole	d	0.05	1.55
7" Reel outside diameter	D	2.0	178.00
7" Reel inner diameter	D ₁	min	50.0
Feed hole diameter	D ₂	0.5	13.00
Sprocket hole position	E	0.1	1.75
Punch hole position	F	0.1	3.50
Punch hole pitch	P	0.1	4.00
Sprocket hole pitch	P ₀	0.1	4.00
Embossment center	P ₁	0.1	2.00
Overall tape thickness	T	0.1	0.25
Tape width	W	0.3	8.15
Reel width	W ₁	1.0	10.5

Note: Devices are packed in accordance with EIA standard RS-481-A and specifications listed above.

Reel packing

PACKAGE	REEL SIZE	REEL (pcs)	COMPONENT SPACING (m/m)	BOX (pcs)	INNER BOX (m/m)	REEL DIA, (m/m)	CARTON SIZE (m/m)	CARTON (pcs)	APPROX. GROSS WEIGHT (kg)
SOD-123	7"	3,000	4.0	45,000	210*208*203	178	430*430*235	180,000	9.0

Suggested Pad Layout



Symbol	Unit (mm)	Unit (inch)
A	1.2	0.047
B	1.2	0.047
C	3.2	0.126
D	2.0	0.079
E	4.4	0.173

Important Notice and Disclaimer

Microdiode Electronics (Jiangsu) reserves the right to make changes to this document and its products and specifications at any time without notice. Customers should obtain and confirm the latest product information and specifications before final design, purchase or use.

Microdiode Electronics (Jiangsu) makes no warranty, representation or guarantee regarding the suitability of its products for any particular purpose, not does Microdiode Electronics (Jiangsu) assume any liability for application assistance or customer product design. Microdiode Electronics (Jiangsu) does not warrant or accept any liability with products which are purchased or used for any unintended or unauthorized application.

No license is granted by implication or otherwise under any intellectual property rights of Microdiode Electronics (Jiangsu).

Microdiode Electronics (Jiangsu) products are not authorized for use as critical components in life support devices or systems without express written approval of Microdiode Electronics (Jiangsu).