

Description	3
PCB Switches.....	4
Technical Data.....	5
Drawings.....	6
Index.....	8

Product Information

General notes

Recommended for all PCB applications as the most compact changeover switch on the market, the 1K2 is ideal as a jumper replacement.

A standard (red) or extended (black) slide actuator gives instant recognition of switch position.

Mounting

The customer has the choice of straight and angle PCB mounting pins.

Contacts

Heavy gold plated contacts are available for applications requiring dependable operation under extreme environmental conditions.

Soldering and Cleaning

Immersion and water jet cleaning is not recommended.

Ultrasonic cleaning is forbidden.

Manual soldering is required for right angle models and side-by-side mounting.

We reserve the right to modify technical data

All dimensions in mm

Change over slide switch 1-pole



	Switching action	Contacts	Contact material	Slider	Typ-Nr.	Component layout	Technical drawing	Circuit drawing	
Change over slide switch 1-pole Pins axial (standard version)	MA	1 C	Gold	Plastic black raised	09.03290.01	1	3	1	0.001
				Plastic red flush	09.03201.02	1	1	1	0.001
Pins axial (tropicalized version)	MA	1 C	Gold	Plastic red flush	19.03201.01	1	1	1	0.001
Pins bent at right-angles (standard version)	MA	1 C	Gold	Plastic black raised	09.10290.01	1	4	1	0.001
				Plastic red flush	09.10201.02	1	2	1	0.001

Switching action: MA = Maintained action

Contacts: C = Changeover

Component layout from page 6, Technical drawing from page 6, Circuit drawing from page 7

Change over slide switch

Approvals

Declaration of conformity
RoHS

Material

Material of contact

0.4 µm Au/Ni (standard version)
2 µm Au/Ni (tropicalized version)

Mechanical characteristics

Terminals

0.4 µm Au/Ni (standard version)
2 µm Au/Ni (tropicalized version)

Actuating travel

1.6 mm nominal

Mechanical lifetime

10 000 operations

Resistance to heat of soldering

at 265 °C, 3 sec.

Electrical characteristics

Operating voltage/-current

Nominal 12 V, 500 mA
Maximum voltage 24 V
Minimum voltage 10mV, 1 mA

Isolation resistance

>10 000 MΩ at 100 VDC

Contact resistance

<22 mΩ

Electrical life

1 000 operations nominal

Switch rating

6 W

Electric strength

250 V_{rms}, 50 Hz

Environmental conditions

Operating temperature

-40 °C ... +85 °C

Climate resistance

Damp heat steady :
4 days,
21 days (tropicalised version),
as per IEC 60512-6-11c

Saline mist :

24 hours
96 hours (tropicalised version),
as per IEC 60512-6-11f

Shock resistance

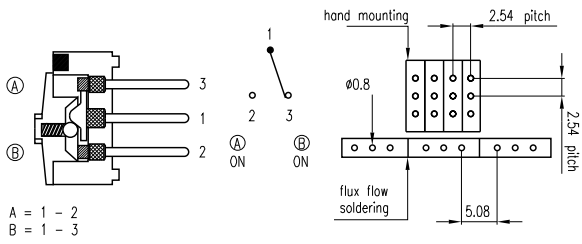
50 g, 11 ms, as per IEC 60512-4-6c

Resistance to vibrations

10 ... 500 Hz, 10 g, as per IEC 60512-4-6d

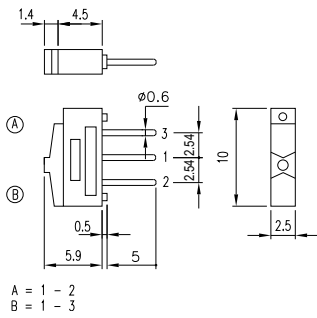
Component layout

1 Change over slide switch 1-pole page 4

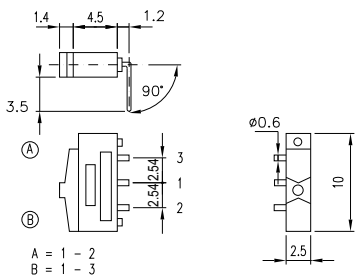


Technical drawing

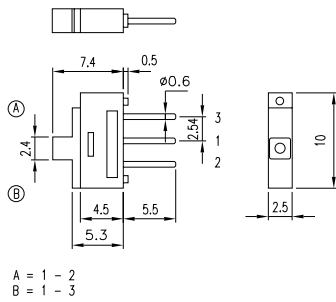
1 Change over slide switch 1-pole page 4



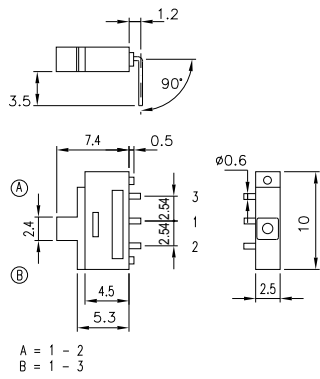
2 Change over slide switch 1-pole page 4



3 Change over slide switch 1-pole page 4



4 Change over slide switch 1-pole page 4



Circuit drawing

1 Change over slide switch 1-pole page 4



Index from Typ-Nr.

<u>Typ-Nr.</u>	<u>Page</u>	<u>Typ-Nr.</u>	<u>Page</u>	<u>Typ-Nr.</u>	<u>Page</u>
09.03201.02	4				
09.03290.01	4				
09.10201.02	4				
09.10290.01	4				
19.03201.01	4				