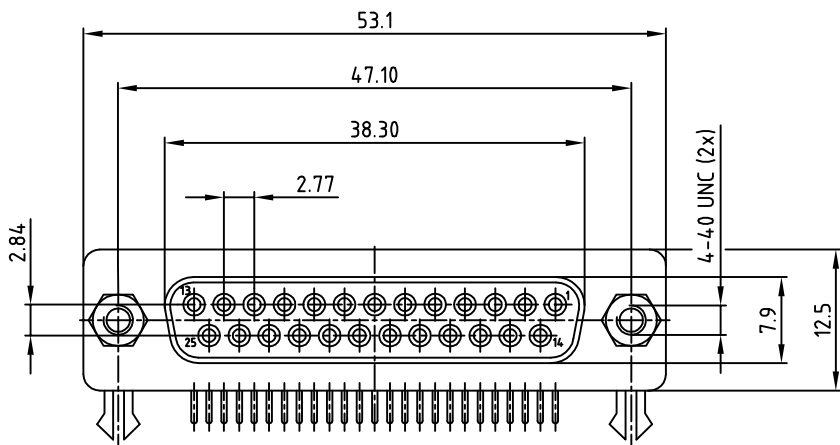
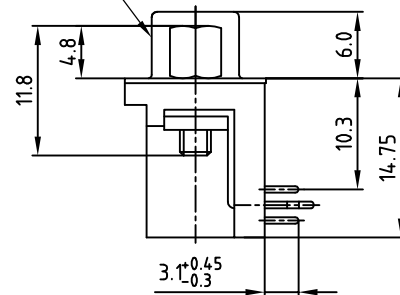
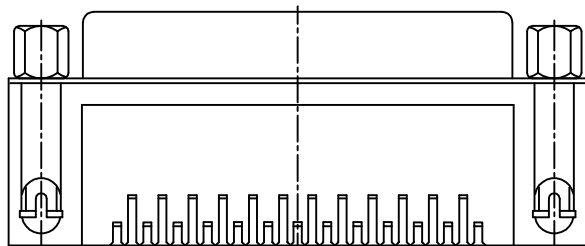


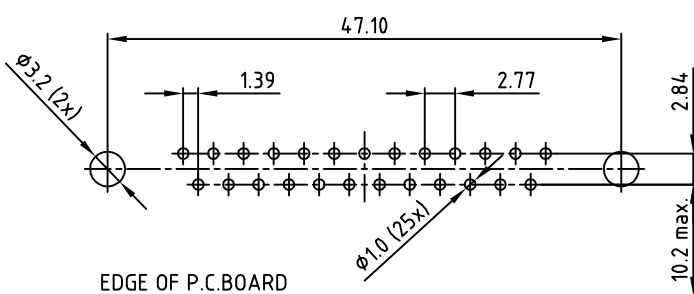
used for: D-SUB

SEE NOTE 4



RECOMMENDED P.C.B. LAYOUT (TOP VIEW)

TOLERANCES: ±0.05mm



SPECIFICATION

1. MATERIAL:
 - INSULATOR: THERMAL PLASTIC UL 94 V-0
 - CONTACTS: COPPER ALLOY
 - SHELL: STEEL
 - RIVET, BOARDLOCK: COPPER ALLOY
2. CONTACT PLATING:
 - UNDERPLATE: 50µm NICKEL
 - CONTACT AREA: GOLD FLASH
 - SOLDER TAILS AREA: GOLD FLASH
3. ELECTRICAL:
 - OPERATION VOLTAGE: 250 V AC max.
 - CURRENT RATING: 3 A
 - CONTACT RESISTANCE: 15 mOhm
 - INSULATION RESISTANCE: 3000 MOhm min. @ 500 V DC
 - DIELECTRIC WITHSTANDING VOLTAGE: 1000 V AC / MINUTE
 - OPERATING TEMPERATURE: -55°C TO +105°C
4. CONNECTOR IS PART MARKED: DLS3XS6AK44X CONEC ABC

Directive 2002/95/EC RoHS compliant

THIS DRAWING MAY NOT BE COPIED OR REPRODUCED IN ANY WAY, AND MAY NOT BE PASSED ON TO A THIRD PARTY, WITHOUT WRITTEN PERMISSION. OWNERSHIP AND COPYRIGHT OF CONEC Gmbh DO NOT ALTER CAD DRAWING BY HAND

rev.	description	date	name
a	Original		

Unless Otherwise Specified Tolerance			dim. in mm
0	±0.5	±0.3	
0	±0.3	±0.2	

scale:	2:1
material:	SEE SPECIFICATION
title:	D-SUB R/A 9.4mm CONNECTOR 25pos. FEMALE with 4.8 x 11.8mm hex bolt
dwg no:	16K1A3216
part no:	DLS3XS6AK44X

DIN-A
3
sh:1/1

Mouser Electronics

Authorized Distributor

Click to View Pricing, Inventory, Delivery & Lifecycle Information:

[CONEC:](#)

[DLS3XS6AK44X](#)