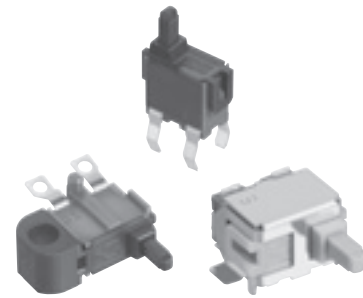


ESE11 Detector Switches

Type: **ESE11**



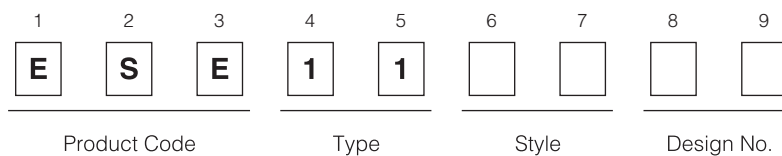
■ Features

- Wide range of customizable features including operational directions
- Light operating force
- Wide available range for reflow soldering

■ Recommended Applications

- Detection of media in portable electronic equipment

■ Explanation of Part Numbers



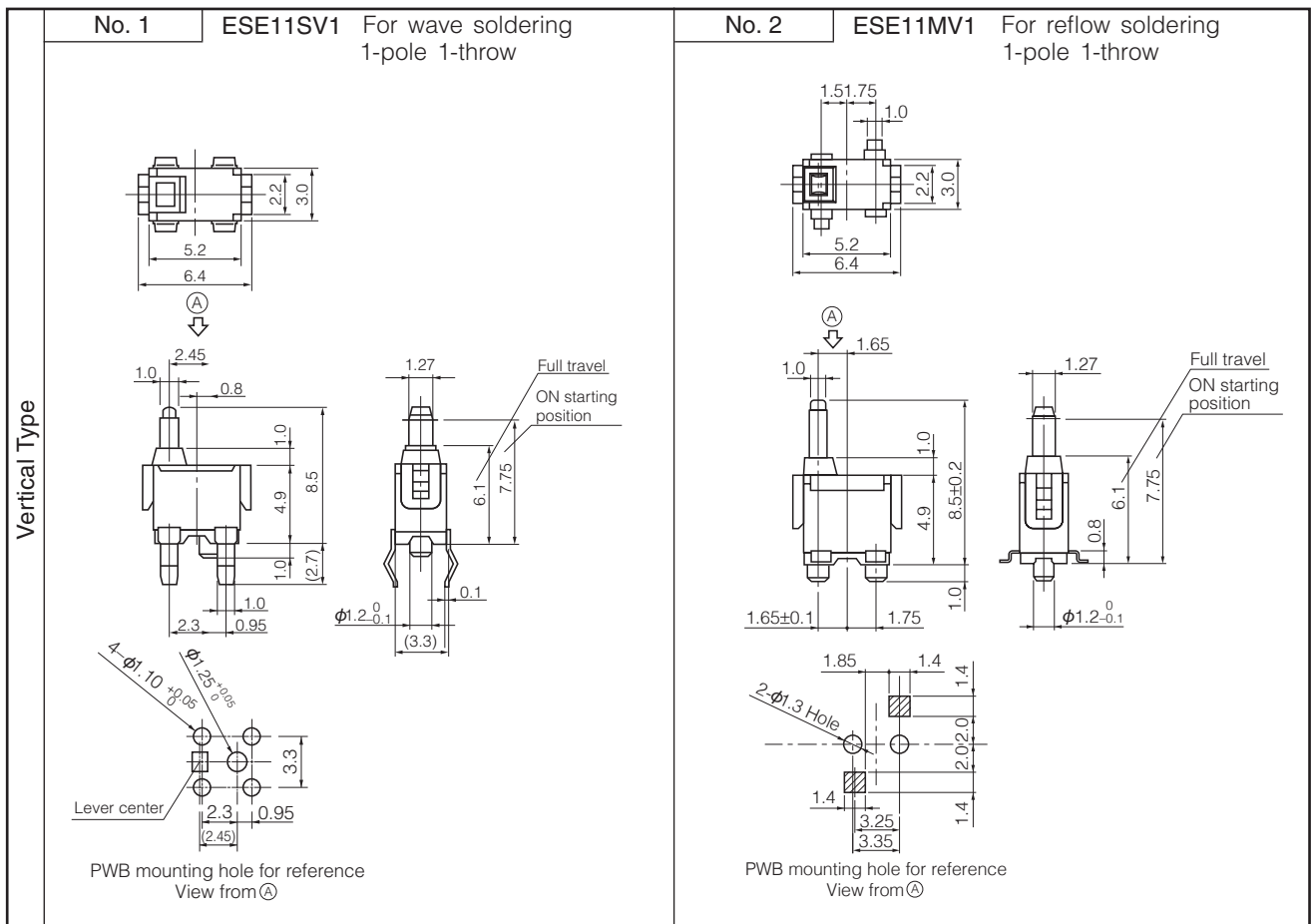
■ Specifications

Rating	50 μ A 3 V DC to 10 mA 5 V DC (Resistive load)
Contact Resistance	500 m Ω max. (Initial)
Insulation Resistance	100 M Ω min. (at 100 V DC for 1 minute)
Dielectric Withstanding Voltage	100 V AC (50 Hz or 60 Hz) for 1 minute
Operating Force	350 mN max. (Full Travel)
Mounting Height	<ul style="list-style-type: none"> · ESE11SV Type 4.9 mm · ESE11MV Type 4.9 mm · ESE11SH Type 5.25 mm · ESE11MH Type 4.25 mm · ESE11HS, SF Type 3.6 mm
Poles and Throws	1-pole 1-throw
Full Travel (Pushing distance)	<ul style="list-style-type: none"> · ESE11SV Type 6.1 mm (2.4 mm) · ESE11MV Type 6.1 mm (2.4 mm) · ESE11SH Type 3.0 mm (2.4 mm) · ESE11MH Type 1.7 mm (2.4 mm) · ESE11HS, SF Type 6.3 mm (2.4 mm)
Operating Life	50,000 cycles min.
Temperature Range	-10 °C to +70 °C (Standard), -40 °C to +85 °C (Automotive)
Heat Resistance	+80 °C for 96 hours
Low Temperature Resistance	-25 °C for 96 hours
Humidity Resistance	+40 °C 90 % to 95 % RH for 96 hours

Design and specifications are each subject to change without notice. Ask factory for the current technical specifications before purchase and/or use. Should a safety concern arise regarding this product, please be sure to contact us immediately.

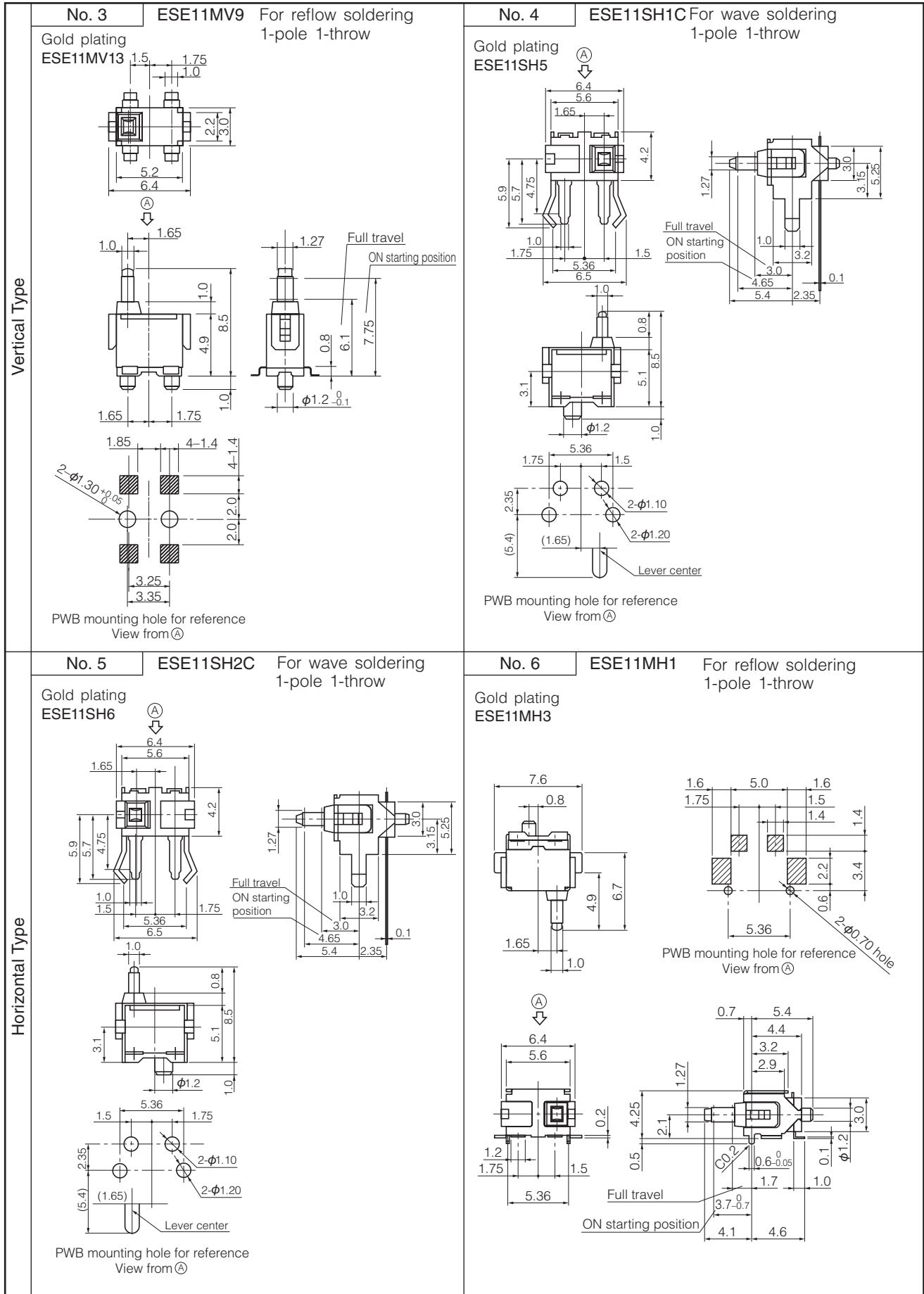
Minimum Quantity/Packing Unit	ESE11SV□ ESE11MV□ ESE11SH□ ESE11MH□ ESE11HS□ ESE11SF□	200 pcs. Polyethylene Bag (Bulk)
	ESE11MV□T (Excluding : ESE11MV2)	800 pcs. Embossed Taping (Reel Pack)
	ESE11MH□T	1,500 pcs. Embossed Taping (Reel Pack)
Quantity/ Carton	ESE11SV□ ESE11MV□ ESE11SH□ ESE11MH□ ESE11HS□ ESE11SF□	10,000 pcs. Polyethylene Bag (Bulk)
	ESE11MV□T (Excluding : ESE11MV2)	4,800 pcs. Embossed Taping (Reel Pack)
	ESE11MH□T	9,000 pcs. Embossed Taping (Reel Pack)

■ Dimensions in mm (not to scale)



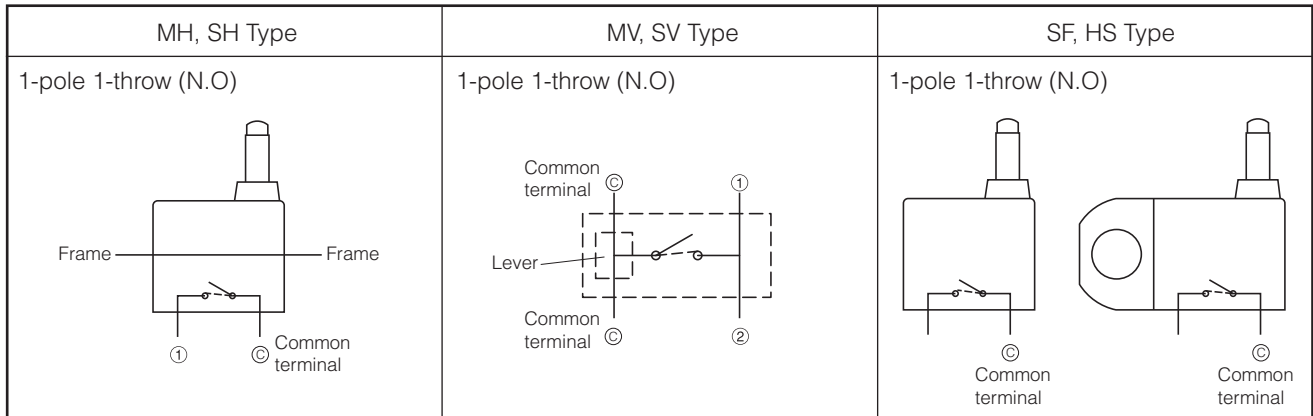
Design and specifications are each subject to change without notice. Ask factory for the current technical specifications before purchase and/or use.
Should a safety concern arise regarding this product, please be sure to contact us immediately.

■ Dimensions in mm (not to scale)



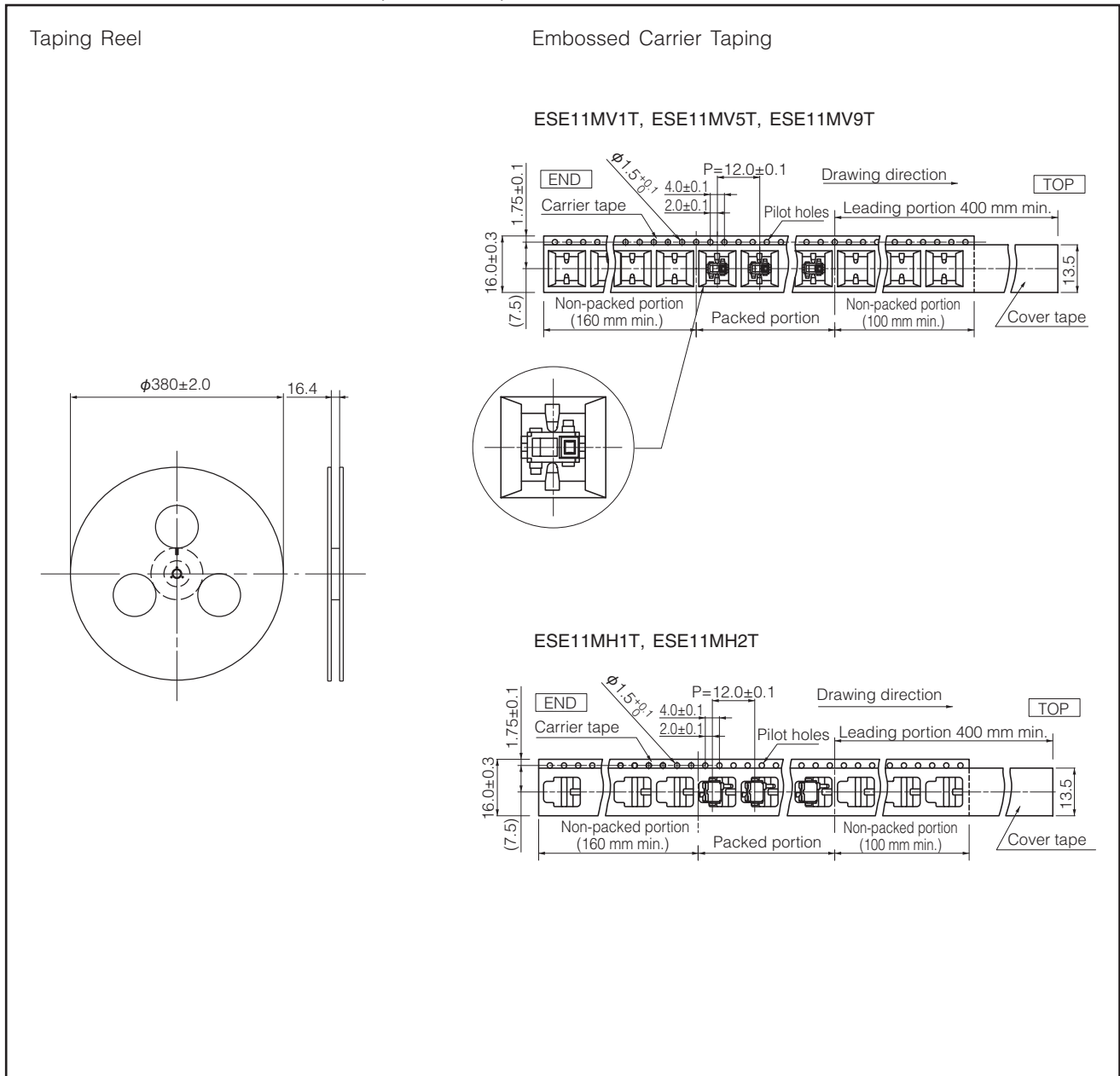
Design and specifications are each subject to change without notice. Ask factory for the current technical specifications before purchase and/or use.
Should a safety concern arise regarding this product, please be sure to contact us immediately.

■ Circuit Diagram



■ Packaging Specifications

Standard Reel Dimensions in mm (not to scale)



Design and specifications are each subject to change without notice. Ask factory for the current technical specifications before purchase and/or use. Should a safety concern arise regarding this product, please be sure to contact us immediately.

Mouser Electronics

Authorized Distributor

Click to View Pricing, Inventory, Delivery & Lifecycle Information:

Panasonic:

[ESE-11SF1](#) [ESE-11SH1](#) [ESE-11HS2](#) [ESE-11MH1](#) [ESE-11MH1T](#) [ESE-11MH2](#) [ESE-11MH2T](#) [ESE-11MH3T](#)
[ESE-11MH4T](#) [ESE-11MH5T](#) [ESE-11MH6T](#) [ESE-11MV1](#) [ESE-11MV1T](#) [ESE-11MV2](#) [ESE-11MV5T](#) [ESE-11MV7](#)
[ESE-11SF1A](#) [ESE-11SH1C](#) [ESE-11SH2C](#) [ESE-11SV1](#) [ESE-11SV3](#) [ESE-11HS1](#) [ESE-11MV9](#) [ESE-11MH3](#) [ESE-](#)
[11SH6](#) [ESE-11MV13](#) [ESE-11SH5](#) [ESE-11MH4](#) [ESE-11MV5](#) [ESE-11MV13T](#) [ESE-11MV9T](#) [ESE-11SV7](#)