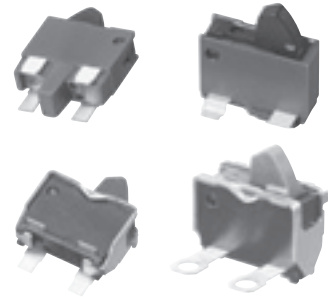


### ESE22 Detector Switches

Type: **ESE22**



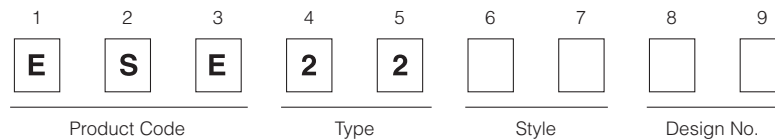
#### ■ Features

- Can be operated with different actuation angles (horizontally and vertically)
- Reflow soldering
- Light operating force

#### ■ Recommended Applications

- Detection of media in portable electronic equipment

#### ■ Explanation of Part Numbers

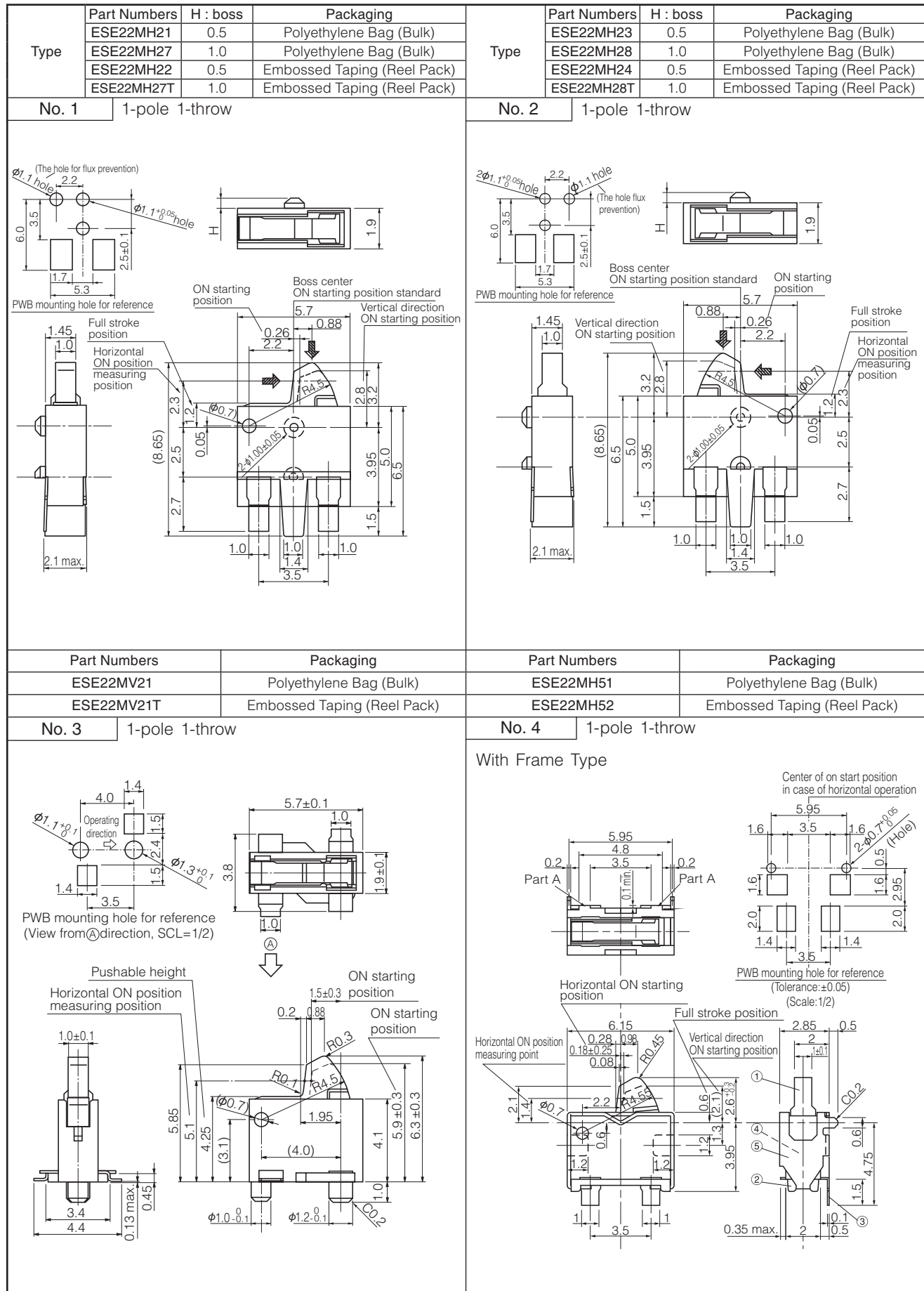


#### ■ Specifications

|                                 |  |   |
|---------------------------------|--|---|
| Rating                          | 50 $\mu$ A 3 V DC to 10 mA 5 V DC (Resistive load)   |   |
| Contact Resistance              | 500 m $\Omega$ max. (Initial)  |   |
| Insulation Resistance           | 100 M $\Omega$ min. (at 100 V DC for 1 minute)   |   |
| Dielectric Withstanding Voltage | 100 V AC (50 Hz or 60 Hz) for 1 minute   |   |
| Operating Force                 | 290 mN max.  |   |
| Mounting Height                 | <ul style="list-style-type: none"> <li>· ESE22MV Type 4.1 mm</li> <li>· ESE22MH Type with Frame 2.85 mm</li> </ul>   | <ul style="list-style-type: none"> <li>· ESE22MH Type 2.1 mm</li> </ul>         |
| Poles and Throws                | 1-pole 1-throw   |   |
| Full Travel (Pushing distance)  | <ul style="list-style-type: none"> <li>· ESE22MV Type 4.25 mm(2.05 mm)</li> <li>· ESE22MH Type with Frame 0.6 mm(2.0 mm)</li> </ul>  | <ul style="list-style-type: none"> <li>· ESE22MH Type 1.2 mm(2.0 mm)</li> </ul> |
| Operating Life                  | 50,000 cycles min.   |   |
| Temperature Range               | -10 °C to +70 °C (Standard), -40 °C to +85 °C (Automotive)   |   |
| Heat Resistance                 | +80 °C for 96 hours  |   |
| Low Temperature Resistance      | -25 °C for 96 hours  |   |
| Humidity Resistance             | +40 °C 90 % to 95 % RH for 96 hours  |   |
| Minimum Quantity/Packing Unit   | 500 pcs. Polyethylene Bag (Bulk)   |   |
|                                 | <ul style="list-style-type: none"> <li>· ESE22MV Type 1,000 pcs. Embossed Taping (Reel Pack)</li> <li>· ESE22MH Type with Frame 3,000 pcs. Embossed Taping (Reel Pack)</li> <li>· ESE22MH Type 4,000 pcs. Embossed Taping (Reel Pack)</li> </ul>   |   |
|                                 | 10,000 pcs. Polyethylene Bag (Bulk)  |   |
| Quantity/Carton                 | 10,000 pcs. Polyethylene Bag (Bulk)  |   |
|                                 | <ul style="list-style-type: none"> <li>· ESE22MV Type 6,000 pcs. Embossed Taping (Reel Pack)</li> <li>· ESE22MH Type with Frame 18,000 pcs. Embossed Taping (Reel Pack)</li> <li>· ESE22MH Type 24,000 pcs. Embossed Taping (Reel Pack)</li> </ul> |   |
|                                 |  |   |

Design and specifications are each subject to change without notice. Ask factory for the current technical specifications before purchase and/or use. Should a safety concern arise regarding this product, please be sure to contact us immediately.

### ■ Dimensions in mm (not to scale)



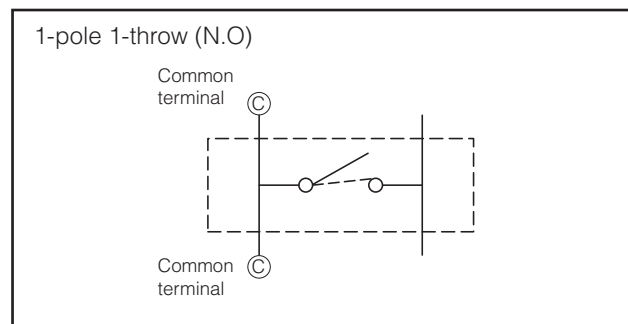
Design and specifications are each subject to change without notice. Ask factory for the current technical specifications before purchase and/or use. Should a safety concern arise regarding this product, please be sure to contact us immediately.

■ Dimensions in mm (not to scale)

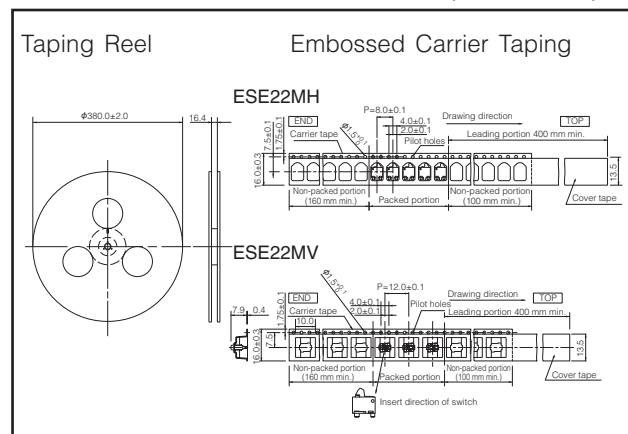
| Part Numbers    | Packaging                   | Part Numbers    | Packaging               |
|-----------------|-----------------------------|-----------------|-------------------------|
| ESE22MH53       | Polyethylene Bag (Bulk)     | ESE22MH57       | Polyethylene Bag (Bulk) |
| ESE22MH54       | Embossed Taping (Reel Pack) | No. 6           | 1-pole 1-throw          |
| No. 5           | 1-pole 1-throw              | Solder lug Type |                         |
| With Frame Type |                             |                 |                         |

| Part Numbers    | Packaging               |
|-----------------|-------------------------|
| ESE22MH58       | Polyethylene Bag (Bulk) |
| No. 7           | 1-pole 1-throw          |
| Solder lug Type |                         |
|                 |                         |

■ Circuit Diagram



■ Packaging Specifications  
Standard Reel Dimensions in mm (not to scale)



Design and specifications are each subject to change without notice. Ask factory for the current technical specifications before purchase and/or use. Should a safety concern arise regarding this product, please be sure to contact us immediately.

# Mouser Electronics

Authorized Distributor

Click to View Pricing, Inventory, Delivery & Lifecycle Information:

## Panasonic:

[ESE-22MV1](#) [ESE-22MV21](#) [ESE-22MH22](#) [ESE-22MH24](#) [ESE-22MH27](#) [ESE-22MH27T](#) [ESE-22MH28](#) [ESE-22MH28T](#) [ESE-22MH52](#) [ESE-22MH54](#) [ESE-22MV21T](#) [ESE-22MH21](#) [ESE-22MH58](#) [ESE-22MH53](#) [ESE-22MH57](#)  
[ESE-22MH51](#) [ESE-22MH23](#)