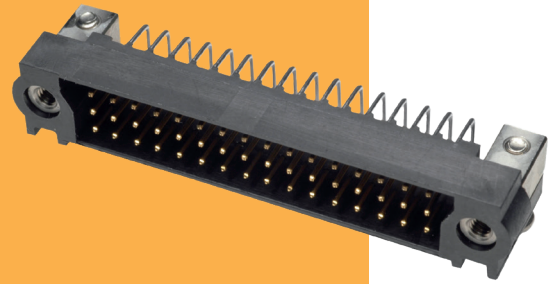


Datamate J-Tek 3-Row Connectors

Male Horizontal Throughboard

- Board Mount screws to be tightened to a maximum torque of 23cmN.
- Suitable for motherboard/daughterboard configurations.
- Fully shrouded contacts, polarized housings.
- All contacts are gold finish for full RoHS compliance.
- Mates with all Datamate 3-Row female connectors with compatible jackscrews.

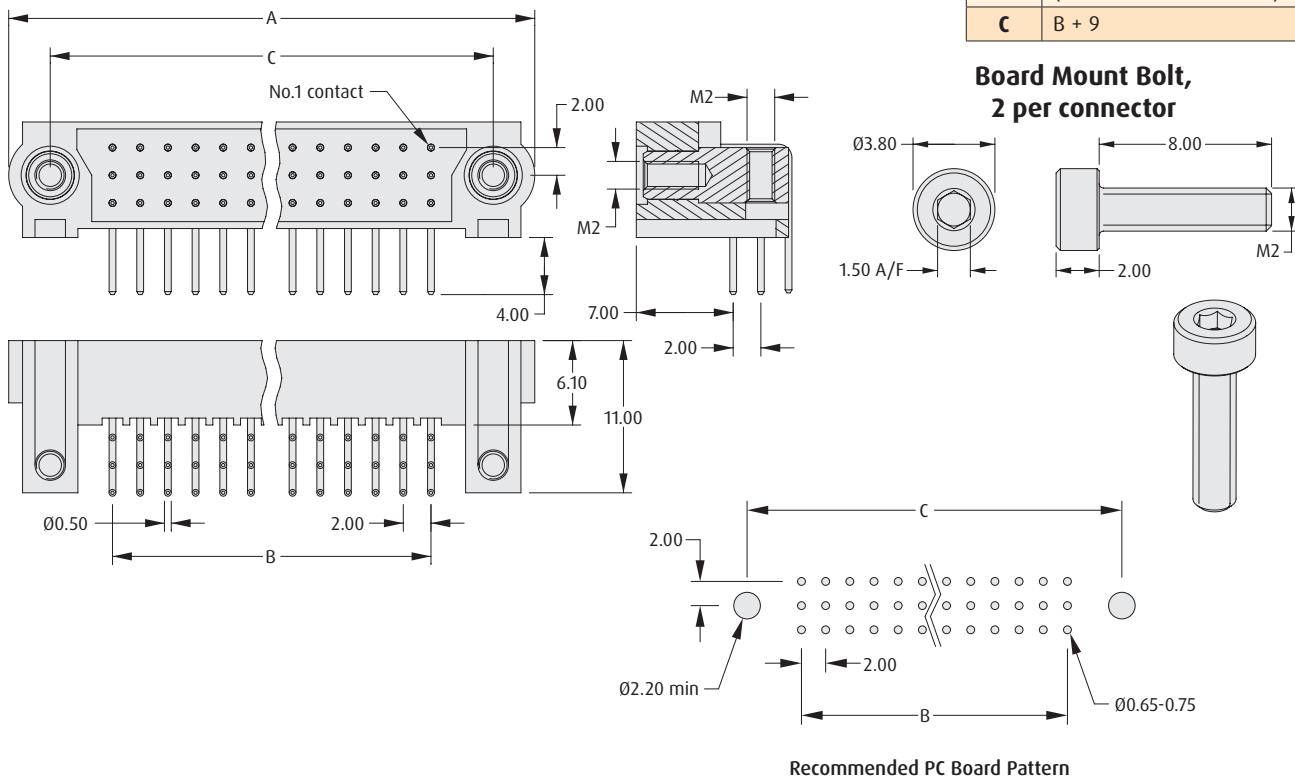


DATAMATE J-TEK 3-ROW

MALE HORIZONTAL

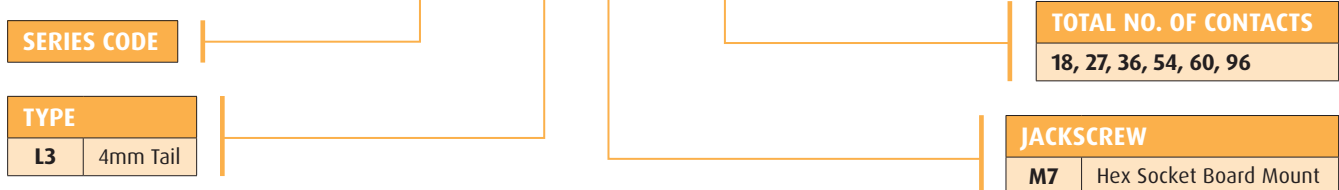
CALCULATION

A	B + 15
B	(Total no. of contacts - 3) x 2/3
C	B + 9



HOW TO ORDER

M83 - LM L3 M7 N XX - 0000 - 000



All dimensions in mm.