

**PLEASE CHECK WWW.MOLEX.COM FOR LATEST PART INFORMATION**

**Part Number:** [1737080005](#)  
**Status:** **Active**  
**Overview:** PowerPlane Busbar Power Connectors  
**Description:** PowerPlane Low-Profile Bus Bar Receptacle Assembly, Right-Angle, Through Hole, 2.84mm Tail Length, Screw Mount, 3.18mm Bus Bar Thickness

**Documents:**

[Drawing \(PDF\)](#) [RoHS Certificate of Compliance \(PDF\)](#)  
[Product Specification 1737080000-PS-000 \(PDF\)](#) [Product Literature \(PDF\)](#)  
[Packaging Specification 1737080000-PK-000 \(PDF\)](#)

**Agency Certification**

CSA LR19980  
 UL E29179

**General**

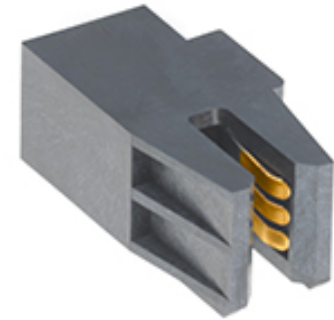
Product Family PCB Receptacles  
 Series [173708](#)  
 Application Power  
 Overview [PowerPlane Busbar Power Connectors](#)  
 Product Name PowerPlane  
 UPC 191128277945

**Physical**

Circuits (Loaded) 1  
 Circuits (maximum) 1  
 Color - Resin Black  
 Durability (mating cycles max) 200  
 Flammability 94V-0  
 Glow-Wire Capable No  
 Guide to Mating Part No  
 Keying to Mating Part None  
 Lock to Mating Part None  
 Material - Metal Copper Alloy  
 Material - Plating Mating Gold  
 Material - Plating Termination Tin  
 Material - Resin Liquid Crystal Polymer  
 Net Weight 4.492/g  
 Number of Rows 1  
 Orientation Right Angle  
 PC Tail Length 2.84mm  
 PCB Locator No  
 PCB Retention Yes  
 PCB Thickness - Recommended 1.58mm  
 Packaging Type Tray  
 Pitch - Mating Interface N/A  
 Plating min - Mating 0.762µm  
 Plating min - Termination 2.540µm  
 Polarized to Mating Part No  
 Polarized to PCB Yes  
 Stackable No  
 Surface Mount Compatible (SMC) No  
 Temperature Range - Operating -40° to +105°C  
 Termination Interface: Style Through Hole

**Electrical**

Current - Maximum per Contact 60.0A



Series image - Reference only

**EU ELV**

**Not Relevant**

**EU RoHS**

**Compliant**

**REACH SVHC**

Not Contained Per -  
 D(2020)4578-DC (25  
 June 2020)

**Halogen-Free**

**Status**

**Low-Halogen**

For more information, please visit [Contact US](#)

China ROHS

ELV

RoHS Phthalates

**China RoHS**

Green Image

Not Relevant

Not Contained

**Search Parts in this Series**

[173708 Series](#)

**Mates With**

3.18mm Thick Bus Bar Tab

**Use With**

Customer Supplied #2-32 Type AB Self  
 Tapping Screw

Voltage - Maximum

600V AC

**Material Info**

**Reference - Drawing Numbers**

Packaging Specification

1737080000-PK-000

Product Specification

1737080000-PS-000

Sales Drawing

1737080000-000

This document was generated on 10/12/2020

**PLEASE CHECK [WWW.MOLEX.COM](http://WWW.MOLEX.COM) FOR LATEST PART INFORMATION**