

## 300-1500W Single Output Industrial Power Supplies

### Features

- ◆ Limited Lifetime Warranty
- ◆ UL508 approved
- ◆ SEMI F47 Compliant (high line AC)
- ◆ Universal Input (85 - 265VAC)
- ◆ High Efficiency
- ◆ Class 1 Div 2 option (/RY suffix)
- ◆ Wide Range AC Input



### Key Market Segments & Applications



Specifications			HWS300	HWS600	HWS1000	HWS1500
Input Voltage range (47-63Hz)	-		85 - 265VAC or 120 - 330VDC (6)**			
Input Current (Typ) (1)	A		5V: 3.8/1.9; 12-48V: 4.2/2.1	5V: 7.5/3.6; 12-48V: 8.1/3.9	3.3V: 9.6/5.0; 5-60V: 13.5/7.0	3.3V: 15.0/8.0; 5-60V: 19.5/10.0
Inrush Current (1)	A		20 / 40			
Power Factor	-		Meets EN61000-3-2			
Temperature Coefficient	-		<0.02%/°C			
Overcurrent Protection	-		>105% (>101% of peak current for peak current capable models)			
Overvoltage Protection	V		See table on page 2 (Recycle AC or remote on/off to reset)			
Hold Up Time (Typ)	ms		20			
Leakage Curr. (at 240VAC, 60Hz)	mA		<0.75mA		<1.2mA	<1.5mA
Remote Sense	-		Yes			
Indicator	-		Green LED = ON			
Remote on/off	-		Yes (Isolated from output)			
Parallel operation	-		Single wire connection (up to 5 units)			
DC Good	-		Yes			
Remote Adjust (PV)	-		External voltage adjusts output, see options table			
Operating Temperature	-		-10°C to +70°C, derate linearly to 50% load from 50C to 70C (2, 3)			
Storage Temperature	°C		-30 to +85°C			
Humidity (non condensing)	-		Operating: 10 - 90%RH, Non operating 10 - 95%RH			
Cooling	-		Internal fan			
Withstand Voltage (4)	-		Input to Ground 2.5kVAC, Input to Output 3kVAC, Output to Ground 500VAC for 1 min.			
Isolation Resistance	-		>100M at 25°C & 70%RH, Output to Ground 500VDC			
Vibration (non operating)	-		10 - 55Hz (1 minute sweep), 19.6m/s <sup>2</sup> constant X, Y, Z 1 hour			
Shock	-		< 196.1 m/s <sup>2</sup>			
Safety Agency Certifications (5)	-		IEC/EN/UL/CSA 60950-1 and 62368-1, EN50178, UL508, CE Mark			
Line Dips	-		SEMI-F47 (200VAC input)			
Conducted & Radiated EMI	-		EN55011 / EN55022, FCC VCCI (HWS300, 600 & 1000: Class B, HWS1500: Class A)			
Immunity	-		IEC61000-4-2, -3, -4, -6 (Level 3), -5, -8 (Level 4), -11			
Weight (Typ)	g		1,000	1,600	3,200	3,3-7.5V: 4000; 12V+: 3800
Size (WxHxD)	in		2.4 x 3.23 x 6.5"	3.94 x 3.23 x 6.5"	5 x 3.25 x 9.45"	5 x 3.25 x 11"
MTBF - Telcordia SR-332 issue 3***	hours		2,145,809	1,998,996	1,087,031	1,152,309
Warranty	yrs		Limited lifetime warranty (See TDK-Lambda's terms and conditions)			

(1) 100/200VAC

(2) HWS start up -20°C. (-40°C see options table)

(3) HWS1000/1500 with 85VAC input: See installation manual

(4) 2kVAC HWS1000/1500 Input to ground

HWS1000: -10 to +71°C. HWS1000-5, HWS1500-3, -5 derate linearly above 40°C

(5) UL60601-1, EN60601-1, see options.

UL508; HWS300/600 5V, 12V, 24V & 48V models

(6) Not on HWS1500/ME, /HD or /RY versions

(\*) Class 1 Div 2 option (/RY suffix)

(\*\*) Safety certified for AC input only

(\*\*\*) 24V output model, 25°C ambient, full load, 230VAC input

Output Ratings										
Model	Voltage V	Adjust Range V(3)	Max Curr. A	Peak Curr. A(2)	Max. Pwr. W	Load Reg mV	Line Reg mV	Ripple Noise mV	Over- voltage V	Eff. typ % (1)
HWS300-3	3.3V	2.64 - 3.96	60	-	198	30	20	120	4.13 - 4.95	74/77
HWS600-3	3.3V	2.64 - 3.96	120	-	396	30	20	120	4.13 - 4.95	75/78
HWS1000-3	3.3V	2.64 - 3.96	200	-	660	40	20	120	4.13 - 4.62	71/73
HWS1500-3	3.3V	2.64 - 3.96	300	-	990	60	36	150	4.12 - 4.62	72/75
HWS300-5	5V	4 - 6	60	-	300	30	20	120	6.25 - 7.25	79/82
HWS600-5	5V	4 - 6	120	-	600	30	20	120	6.25 - 7.25	80/83
HWS1000-5	5V	4 - 6	200	-	1000	40	20	120	6.25 - 7.0	76/78
HWS1500-5	5V	4 - 6	300	-	1500	60	36	150	6.25 - 7.0	77/81
HWS1000-6	6V	4.8 - 7.2	167	-	1002	60	36	150	7.5 - 8.4	79/81
HWS1500-6	6V	4.8 - 7.2	250	300	1500	60	36	150	7.5 - 8.4	79/82
HWS1000-7	7.5V	6 - 9V	134	160	1005	60	36	150	9.38 - 10.5	80/82
HWS1500-7	7.5V	6 - 9V	200	240	1500	60	40	150	9.37 - 10.5	81/83
HWS300-12	12V	9.6 - 14.4	27	-	324	96	48	120	15 - 17.4	80/83
HWS600-12	12V	9.6 - 14.4	53	-	648	96	48	120	15 - 17.4	80/83
HWS1000-12	12V	9.6 - 14.4	88	100	1056	100	48	150	15 - 17.4	83/85
HWS1500-12	12V	9.6 - 14.4	125	-	1500	72	48	150	15 - 17.4	82/85
HWS300-15	15V	12 - 18	22	-	330	120	60	150	18.8 - 21.8	82/85
HWS600-15	15V	12 - 18	43	-	645	120	60	150	18.8 - 21.8	82/85
HWS1000-15	15V	12 - 18	70	80	1050	120	60	150	18.8 - 21.8	83/85
HWS1500-15	15V	12 - 18	100	-	1500	90	60	150	18.7 - 21.8	83/87
HWS300-24	24V	19.2 - 28.8	14	16.5	336	192	96	150	30 - 34.8	82/85
HWS600-24	24V	19.2 - 28.8	27	31	648	192	96	150	30 - 34.8	82/85
HWS1000-24	24V	19.2 - 28.8	44	50	1056	150	96	150	30 - 34.8	85/87
HWS1500-24	24V	19.2 - 28.8	65/70 (1)	105	1560	144	96	200	30 - 34.8	84/88
HWS1000-36	36V	28.8 - 43.2	29.3	33.3	1055	150	144	200	45 - 49.7	85/88
HWS1500-36	36V	28.8 - 43.2	42/46.5 (1)	70	1512	150	144	200	45 - 49.7	84/88
HWS300-48	48V	38.4 - 52.8	7	-	336	384	192	200	55.2 - 64.8	82/85
HWS600-48	48V	38.4 - 52.8	13	-	624	384	192	200	55.2 - 64.8	82/85
HWS1000-48	48V	38.4 - 52.8	22	25	1056	300	192	200	55.2 - 64.8	86/88
HWS1500-48	48V	38.4 - 52.8	32	-	1536	288	192	200	55.2 - 64.8	86/90
HWS1000-60	60V	48 - 66	17.6	20	1056	360	240	400	69 - 75	85/88
HWS1500-60	60V	48 - 66	25.6/28 (1)	42	1536	360	240	400	69 - 75	86/90

Notes  
 (1) 100/200VAC  
 (2) 200-265VAC Input, 10s maximum on time with 35% duty cycle  
 (3) Use program input (PV) to adjust from 20-120% of nominal (20-110% for 48V & 60V models)

Options	
Suffix	Description
Blank	HWS300-1500 the cover is fitted as standard
/A	Not Applicable
	HWS300-1500 the cover is fitted as standard
/PV	HWS300, 600 (Standard on HWS1000 & 1500): 1-6V program voltage input to adjust output 20-120% of nominal (20-110% for 48V) (12V-48V models only)
/HD	See HWS50-1500/HD Datasheet for details.-40 to +71(74)°C operation, conformally coated PCBs
/ME	See HWS30-1500/ME Datasheet for details. UL60601-1, EN60950-1 medical certification
/RY	ISA 12.12.01 (UL1604) - Class 1 Div 2 with dry contact relay DC Good signal (300W, 600W and 1500W 24V output models only, no UL508 certification, no remote on/off function.)

Other Industrial Products	
HWS	15W to 150W single output
LZSA	500W to 1500W Single output
SWS	50W to 1000W, low cost
DPP, DLP & DSP	10W to 480W DIN Rail Mount

For Additional Information, please visit  
<https://product.tdk.com/en/power/>



## 1800W 3ph Industrial Power Supplies

### Features

- ◆ Limited Lifetime Warranty
- ◆ 208VAC Three Phase Input
- ◆ High Efficiency
- ◆ SEMI F47 Compliant
- ◆ Compact Size



### Key Market Segments & Applications



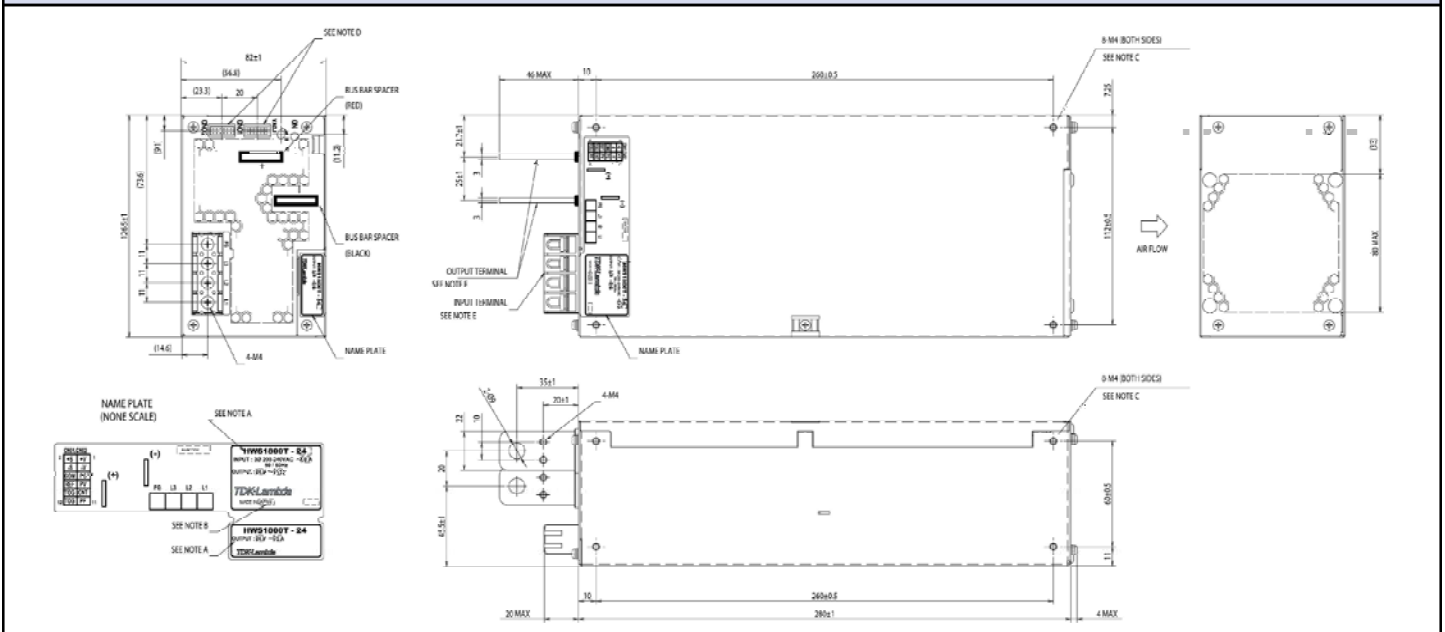
### Specifications

Model		HWS1800
Input Voltage Range	-	208VAC, Three phase 170 - 265VAC (47 - 63Hz)
Input Current (Typical)	A	3.3V: 4.5A, 5V to 15V: 6A, 24 to 60V: 7A
Inrush Current (200VAC)	A	40A
Power Factor	-	Typically 0.94
Temperature Coefficient	-	<0.02%/°C
Overcurrent Protection	-	>105% of maximum / peak current rating
Overvoltage Protection	V	See table on page 2. Cycle input to reset or use remote on/off function
Hold Up Time (Typ)	ms	3.3V to 15V: 20ms, 24 to 60V: 18ms at 200VAC
Leakage Current (max)	mA	<2.6mA at 240VAC 60Hz
Remote Sense	-	Yes
Indicator	-	Green LED = ON
Remote on/off	-	Yes
Parallel operation	-	Single wire connection
DC Good	-	Yes
Remote Adjust (PV)	-	External voltage adjusts output voltage. See Instruction Manual
Operating Temperature	°C	-10°C to +71°C, see output derating curves, -20°C start up
Storage Temperature	°C	-30 to +85°C
Humidity (non condensing)	-	Operating: 10 - 90%RH, Non operating 10 - 95%RH
Cooling	-	Internal fan
Withstand Voltage	-	I/P to Grnd 2kVAC, I/P to O/P 3kVAC, O/P to Grnd 500VAC (1), O/P to CNT 100VAC for 1 min
Isolation Resistance	-	>100M at 25C & 70%RH, Output to Ground 500VDC
Vibration (non operating)	-	10 - 55Hz (1 minute sweep), 19.6m/s <sup>2</sup> constant X, Y, Z 1 hour
Shock	-	< 196.1 m/s <sup>2</sup>
Safety Agency Approvals	-	IEC/EN/UL/CSA 60950-1 and 62368-1, EN50178, CE Mark
Line Dip	-	Complies with SEMI F47
Conducted & Radiated EMI	-	EN55011 / EN55022-A, FCC-A, VCCI-A
Immunity	-	IEC61000-4-2, -3, -4, -5, -6, -8
Weight (Typ)	g	3800
Size (WxHxD)	in	4.98 x 3.23 x 11"
Warranty	yrs	Limited lifetime warranty (See Lambda's terms & conditions)

#### Notes:

(1) HWS1800T-60V: 651VAC

## Outline Drawing



## Output Ratings

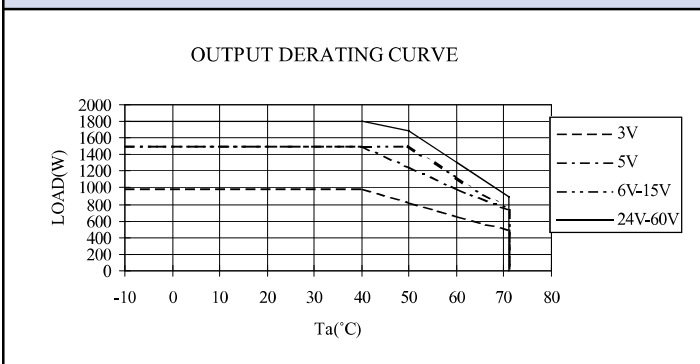
Model	Voltage V	Adjust Range V	Max Curr. A	Peak Curr. A(2)	Max Power W	Peak Power W2	Load Reg mV	Line Reg mV(3)	Ripple Noise mV	Overvoltage V	Efficiency (typ) %
HWS1800T-3	3.3	2.64 - 3.96	300	-	990	-	60	36	120	4.12 - 4.62	75
HWS1800T-5	5	4 - 6	300	-	1500	-	60	36	120	6.25 - 7.0	81
HWS1800T-6	6	4.8 - 7.2	250	300	1500	1800	60	40	150	7.5 - 8.4	82
HWS1800T-7	7.5	6 - 9	200	240	1500	1800	60	40	150	9.37 - 10.5	84
HWS1800T-12	12	9.6 - 14.4	125	150	1500	1800	72	48	200	15 - 17.4	84
HWS1800T-15	15	12 - 18	100	120	1500	1800	90	60	200	18.7 - 21.8	84
HWS1800T-24	24	19.2 - 28.8	75	105	1800	2520	144	96	250	30 - 34.8	88
HWS1800T-36	36	28.8 - 43.2	50	70	1800	2520	216	144	250	45 - 49.7	88
HWS1800T-48	48	38.4 - 52.8	37.5	52.5	1800	2520	288	192	300	55.2 - 60	90
HWS1800T-60	60	48 - 66	30	42	1800	2520	360	240	400	69 - 75	90

### Notes

(2) 10s maximum on time with 35% duty cycle

(3) 180 - 265VAC

## Output Derating Curves



## Other Industrial Products

HWS	15W to 1500W single output, single phase
LZSA	500W to 1500W single output
SWS	50W to 1000W, low cost
DPP, DLP & DSP	10W to 960W DIN Rail mount

For Additional Information, please visit  
<https://product.tdk.com/en/power/>

