

# LQM2HPN2R2MGH#

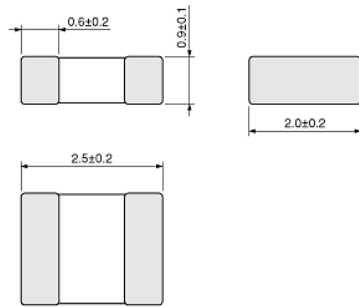
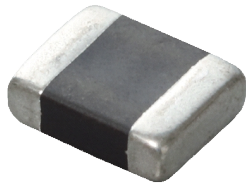
"#" indicates a package specification code.

High Spec Type (Low DC Resistance / Good Bias Current Characteristics Type)



< List of part numbers with package codes >  
LQM2HPN2R2MGHL LQM2HPN2R2MGHB

## Appearance & Shape



(in mm)

## Notices

When rated current is applied to the products, inductance will be within  $\pm 30\%$  of initial inductance value range. When rated current is applied to the products, the temperature rise caused by self-generated heat shall be limited to  $40^{\circ}\text{C}$  max. Keep the temperature (ambient temperature plus self-generation of heat) under  $125^{\circ}\text{C}$ .

### Attention

- 1.This datasheet is downloaded from the website of Murata Manufacturing Co., Ltd. Therefore, it's specifications are subject to change or our products in it may be discontinued without advance notice. Please check with our sales representatives or product engineers before ordering.
- 2.This datasheet has only typical specifications because there is no space for detailed specifications.

Therefore, please review our product specifications or consult the approval sheet for product specifications before ordering.

# LQM2HPN2R2MGH#

"#" indicates a package specification code.

## References

| Packaging | Specifications   | Minimum Order Quantity |
|-----------|------------------|------------------------|
| L         | 180Embossed Tape | 3000                   |
| B         | Bulk(Bag)        | 1000                   |

| Mass (typ.) |        |
|-------------|--------|
| 1 piece     | 0.022g |

### Attention

- 1.This datasheet is downloaded from the website of Murata Manufacturing Co., Ltd. Therefore, it's specifications are subject to change or our products in it may be discontinued without advance notice. Please check with our sales representatives or product engineers before ordering.
  - 2.This datasheet has only typical specifications because there is no space for detailed specifications.
- Therefore, please review our product specifications or consult the approval sheet for product specifications before ordering.

# LQM2HPN2R2MGH#

"#" indicates a package specification code.

## Specifications

|  |                        |
|--|------------------------|
| L size   | 2.5±0.2mm              |
| W size   | 2.0±0.2mm              |
| T size   | 0.9±0.1mm              |
| Size code inch (mm)  | 1008 (2520)            |
| Inductance   | 2.2μH±20%              |
| Inductance Test Frequency                                      | 1MHz                   |
| Rated current (I <sub>sat</sub> ) (Based on Inductance change) | 1.5A(Max) / 1.6A(Typ.) |
| Rated current (I <sub>temp</sub> ) (Based on Temperature rise) | 1.5A(Max) / 1.9A(Typ.) |
| Max. of DC resistance  | 0.138Ω                 |
| Class of magnetic shield                                       | Ferrite Core           |
| Self resonance frequency (min.)                                | 30MHz                  |
| DC Resistance Intermediate Values                              | 0.11Ω(typ.)            |
| Operating Temperature Range                                    | -40°C to 85°C          |
| Series   | LQM2HPN_GH             |

### Attention

1.This datasheet is downloaded from the website of Murata Manufacturing Co., Ltd. Therefore, it's specifications are subject to change or our products in it may be discontinued without advance notice. Please check with our sales representatives or product engineers before ordering.

2.This datasheet has only typical specifications because there is no space for detailed specifications.

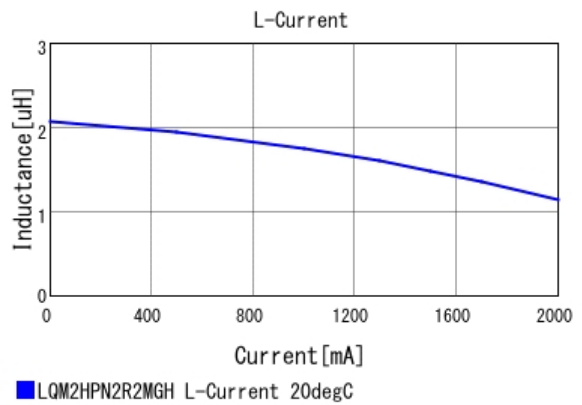
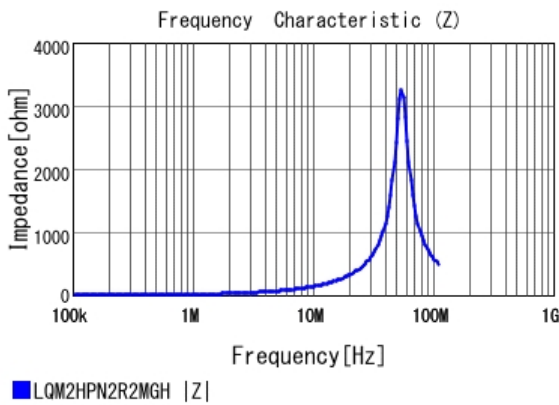
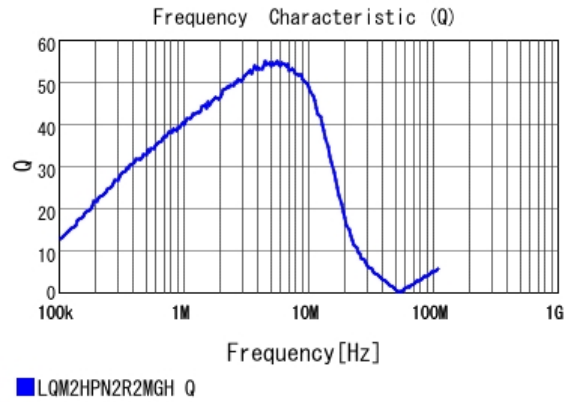
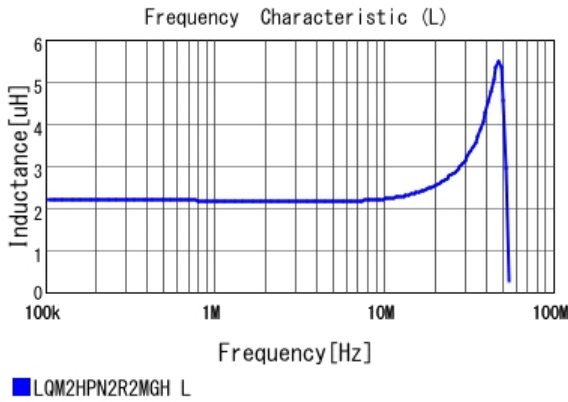
Therefore, please review our product specifications or consult the approval sheet for product specifications before ordering.

# LQM2HPN2R2MGH#

"#" indicates a package specification code.

## Characteristic Data

The charts below may show another part number which shares its characteristics.

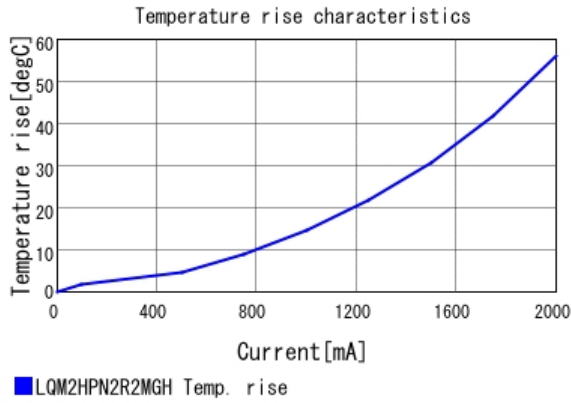


**Attention**

- 1.This datasheet is downloaded from the website of Murata Manufacturing Co., Ltd. Therefore, it's specifications are subject to change or our products in it may be discontinued without advance notice. Please check with our sales representatives or product engineers before ordering.
- 2.This datasheet has only typical specifications because there is no space for detailed specifications.  
Therefore, please review our product specifications or consult the approval sheet for product specifications before ordering.

# LQM2HPN2R2MGH#

"#" indicates a package specification code.



**Attention**

- 1.This datasheet is downloaded from the website of Murata Manufacturing Co., Ltd. Therefore, it's specifications are subject to change or our products in it may be discontinued without advance notice. Please check with our sales representatives or product engineers before ordering.
  - 2.This datasheet has only typical specifications because there is no space for detailed specifications.
- Therefore, please review our product specifications or consult the approval sheet for product specifications before ordering.